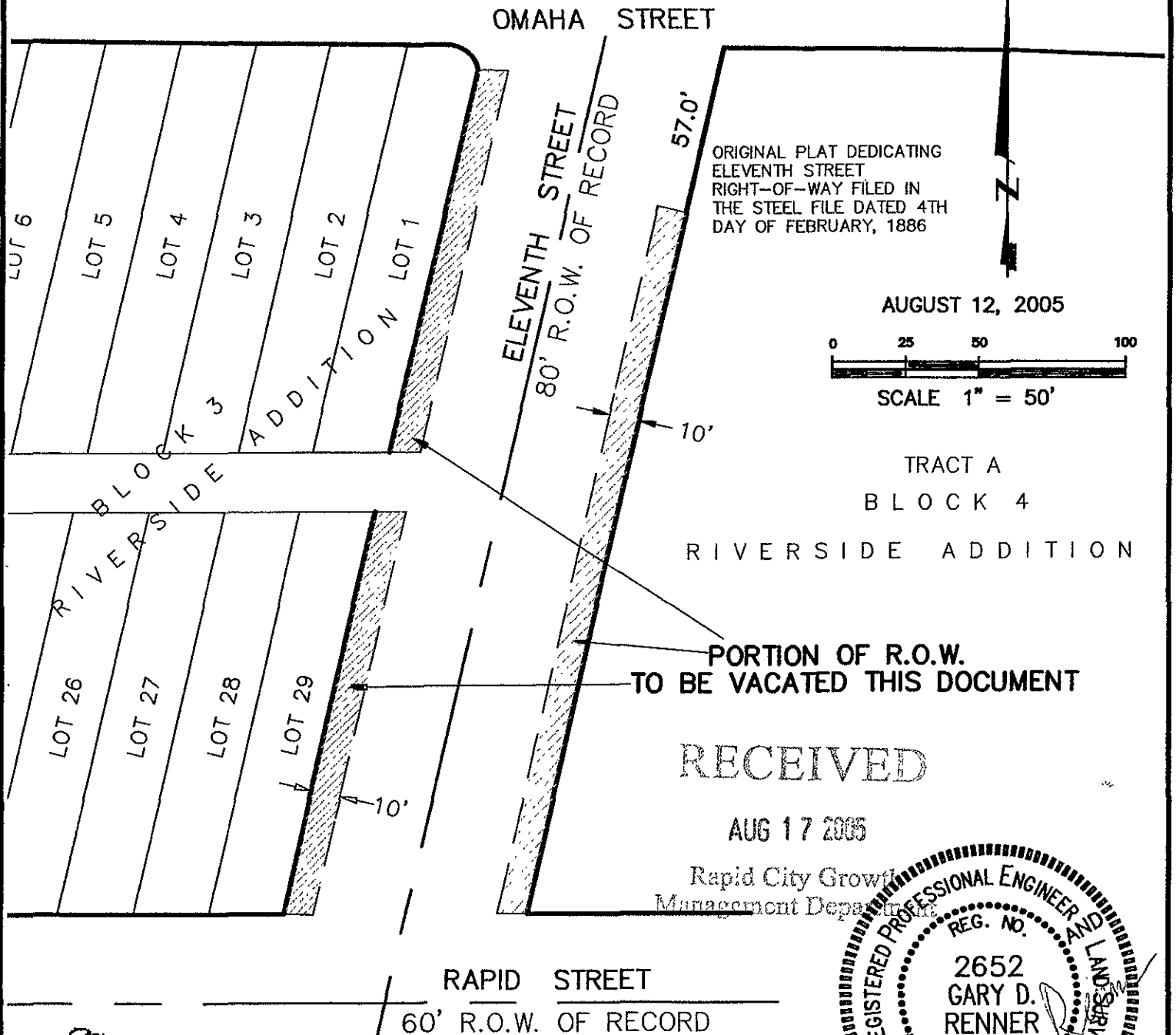


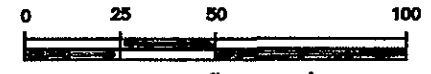
EXHIBIT "A" VACATION OF R.O.W. A PORTION OF ELEVENTH STREET IN BLOCKS 3 AND 4, RIVERSIDE ADDITION

LOCATED IN SE1/4 OF SE1/4,
SECTION 35, T.2.N., R.7.E., B.H.M.,
RAPID CITY, PENNINGTON COUNTY, SOUTH DAKOTA



ORIGINAL PLAT DEDICATING
ELEVENTH STREET
RIGHT-OF-WAY FILED IN
THE STEEL FILE DATED 4TH
DAY OF FEBRUARY, 1886

AUGUST 12, 2005



SCALE 1" = 50'

TRACT A
BLOCK 4
RIVERSIDE ADDITION

PORTION OF R.O.W.
TO BE VACATED THIS DOCUMENT

RECEIVED

AUG 17 2005

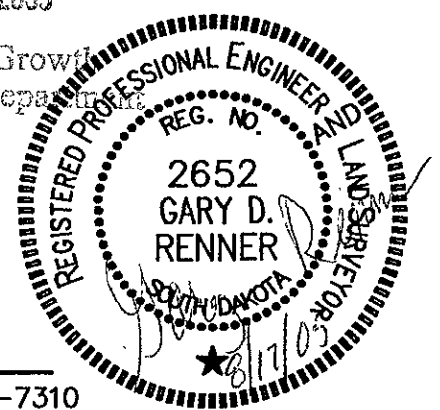
Rapid City Growth
Management Department

RAPID STREET
60' R.O.W. OF RECORD

Renner Associates, LLC.



616 Sixth St. * Rapid City, SD 57701 * 605/721-7310
FAX: 605/721-7313 * E-MAIL: Gary@RennerAssoc.com
* Spearfish 605/717-0016 *



C:\CADFILES\DRAWINGS\2021\First\Western\New\VACATION.dwg, 8.5x11 (2), 8/17/2005 1:07:30 PM