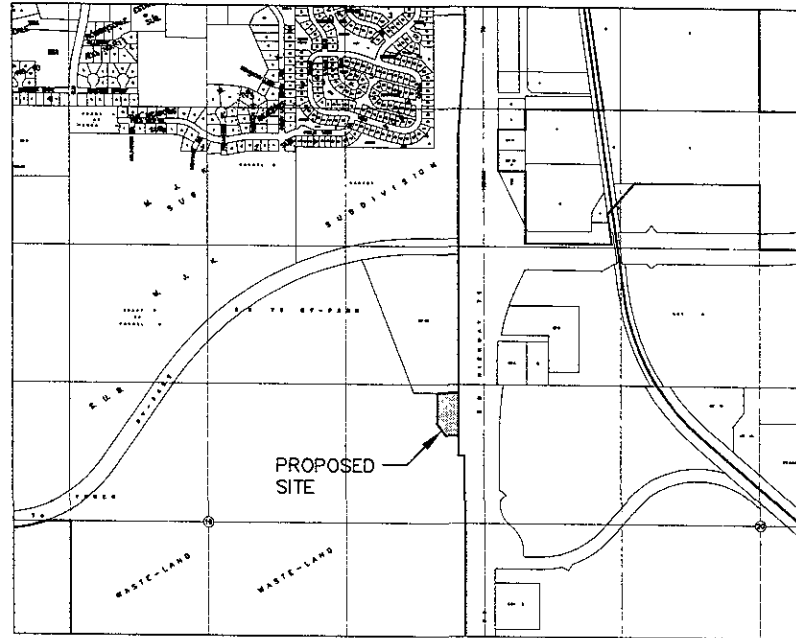


COMMUNITY ALTERNATIVES OF THE BLACK HILLS

RAPID CITY, SD SEPTEMBER 2005



VICINITY MAP
SCALE 1" = 600'

RECEIVED

SEP 09 2005

Rapid City Growth
Management Department

INDEX OF SHEETS

- C1 TITLE SHEET
- C2 TOPOGRAPHIC MAP
- C3 LAYOUT PLAN
- C4 GRADING PLAN
- L1 LANDSCAPE PLAN

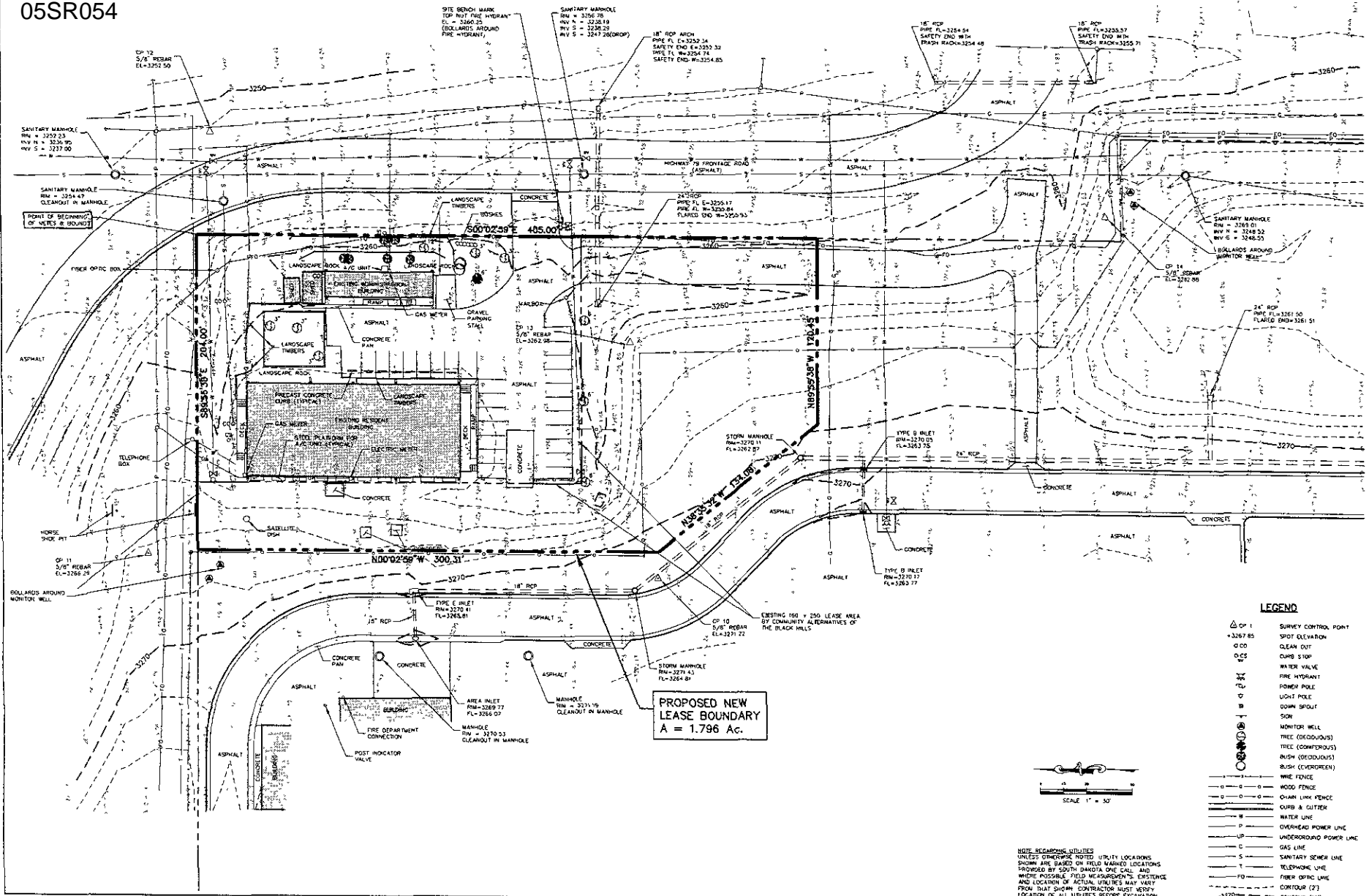


FMG, Inc.
 3700 Blurple Road
 Rapid City, SD 57705-0317
 (605) 342-4105 FAX (605) 342-4222
 www.fmgengineering.com

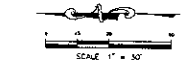
File Number	05SR
Location	NE1/4 SECTION 19 T1N R3E (2nd)
Surveyed By	
Date	11/17/05
Designed By	
Drawn By	JLS
Checked By	JLS

COMMUNITY ALTERNATIVES
 OF THE BLACK HILLS
 RAPID CITY, SD
 SEPTEMBER 2005

Revision / Date	
Sheet Name	TITLE SHEET
Sheet Number	C1 of C4



PROPOSED NEW LEASE BOUNDARY
A = 1.796 Ac.



LEGEND

△	SURVEY CONTROL POINT
•	SPOT ELEVATION
○	CLEAN OUT
○	CATCH BASIN
○	WATER VALVE
○	FIRE HYDRANT
○	POWER POLE
○	LIGHT POLE
○	DOWN SPOUT
○	SOB
○	MONITOR WELL
○	TREE (DECIDUOUS)
○	TREE (CONIFEROUS)
○	BUSH (DECIDUOUS)
○	BUSH (EVERGREEN)
—	WIRE FENCE
—	WOOD FENCE
—	CHAIN LINK FENCE
—	CURB & GUTTER
—	WATER LINE
—	OVERHEAD POWER LINE
—	UNDERGROUND POWER LINE
—	GAS LINE
—	SANITARY SEWER LINE
—	TELEPHONE LINE
—	FIBER OPTIC LINE
—	CONTOUR (2')
—	CONTOUR (10')

NOTE REGARDING UTILITIES
UNLESS OTHERWISE NOTED, UTILITY LOCATIONS SHOWN ARE BASED ON FIELD MARKED LOCATIONS PROVIDED BY SOUTH DAKOTA ONE CALL AND, WHERE POSSIBLE, FIELD MEASUREMENTS. EXISTENCE AND LOCATION OF ACTUAL UTILITIES MAY VARY FROM THAT SHOWN. CONTRACTOR MUST VERIFY LOCATION OF ALL UTILITIES BEFORE EXCAVATION.

FMG, Inc.
3700 Sturgis Road
Rapid City, SD 57702
(605) 342-4400 FAX (605) 342-4222
www.fmgengr.com

File Number	8852
Location	N(1/4) SECTION 19 T1N 58E 9W
Designed By	MS/7/10
Drawn By	APL
Checked By	MS

COMMUNITY ALTERNATIVES OF THE BLACK HILLS
RAPID CITY, SD

Revision / Date

Sheet Name

TOPOGRAPHIC MAP

Sheet Number

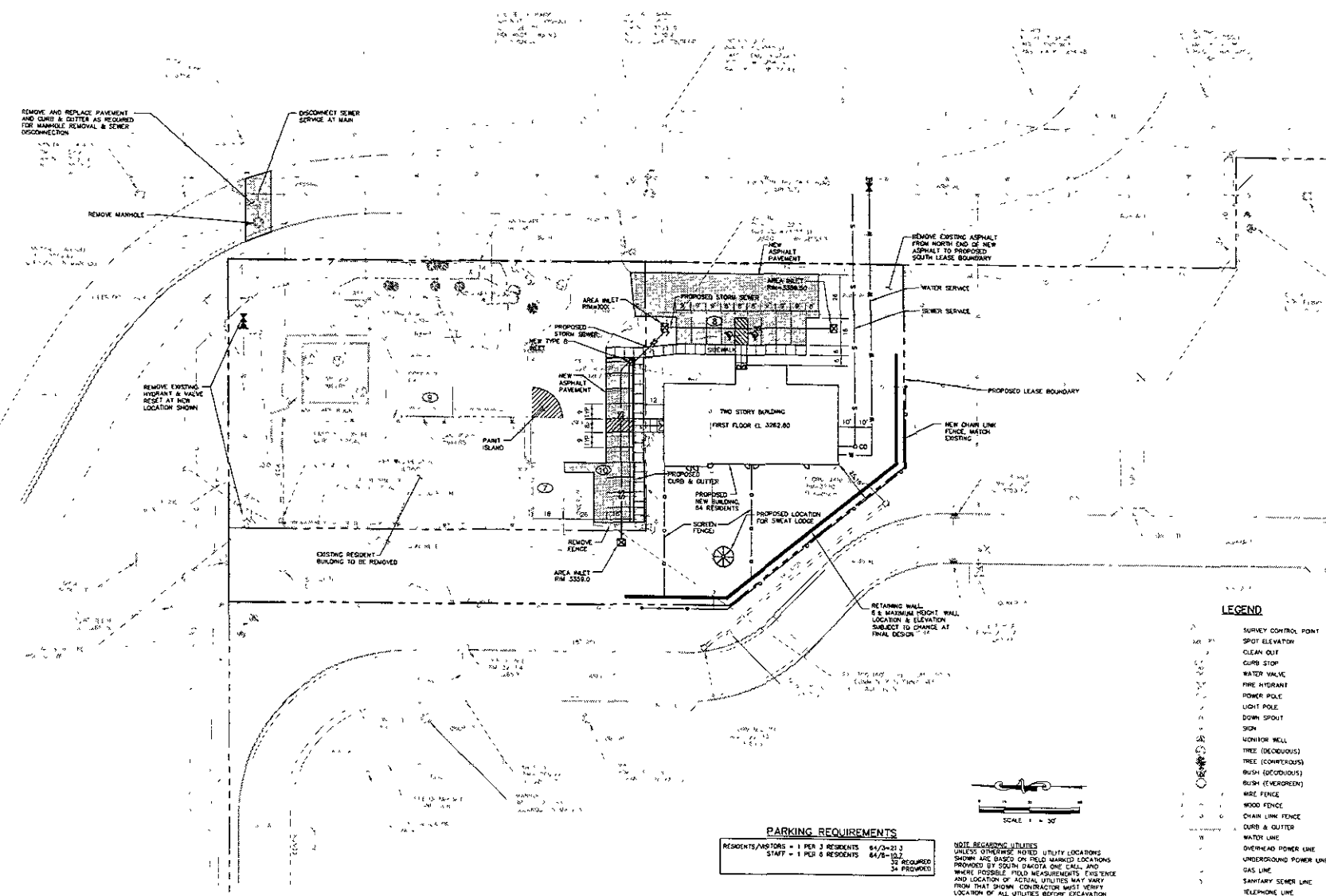
C2 of C4

**COMMUNITY ALTERNATIVES
 OF THE BLACK HILLS
 RAPID CITY, SD**

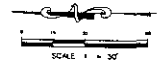
Revision / Date
 Sheet Name

**LAYOUT
 PLAN**

Sheet Number



- LEGEND**
- SURVEY CONTROL POINT
 - SPOT ELEVATION
 - CLEAN OUT
 - CURB STOP
 - WATER VALVE
 - FIRE HYDRANT
 - POWER POLE
 - LIGHT POLE
 - DOWN SPOUT
 - SIGN
 - MONITOR WELL
 - TREE (DECIDUOUS)
 - TREE (CONIFEROUS)
 - BUSH (DECIDUOUS)
 - BUSH (CONIFEROUS)
 - WIRE FENCE
 - WOOD FENCE
 - CHAIN LINK FENCE
 - CURB & GUTTER
 - WATER LINE
 - OVERHEAD POWER LINE
 - UNDERGROUND POWER LINE
 - GAS LINE
 - SANITARY SEWER LINE
 - TELEPHONE LINE
 - FIBER OPTIC LINE
 - CONTOUR (2')
 - CONTOUR (10')

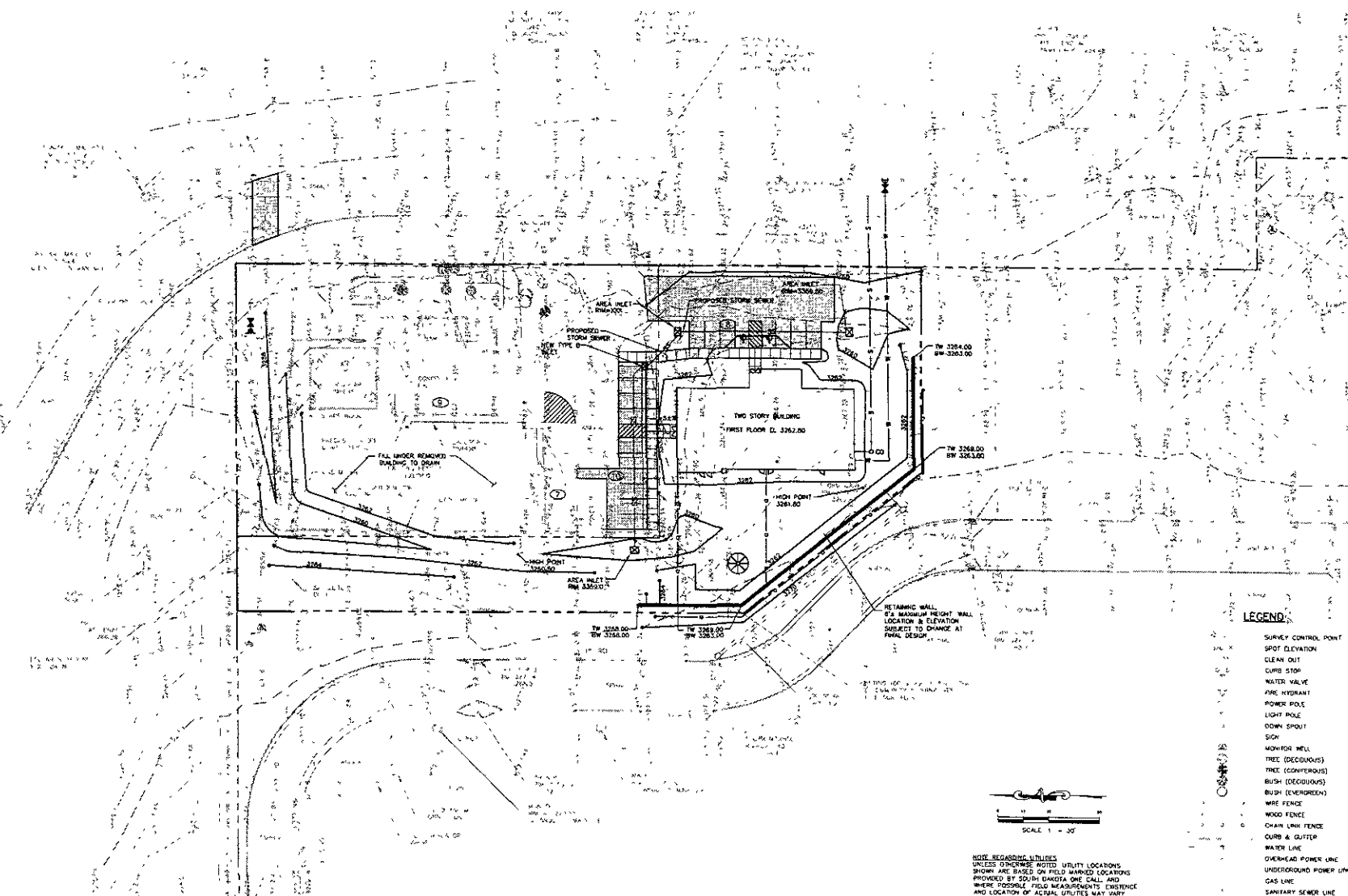


PARKING REQUIREMENTS

RESIDENTS/AUTOS	= 1 PER 3 RESIDENTS	64/3=21.3
STAFF	= 1 PER 0 RESIDENTS	64/0=∞
		22 REQUIRED
		24 PROVIDED

NOTE REGARDING UTILITIES
 UNLESS OTHERWISE NOTED UTILITY LOCATIONS SHOWN ARE BASED ON FIELD MARKED LOCATIONS PROVIDED BY SOUTH DAKOTA ONE CALL AND WHERE POSSIBLE FIELD MEASUREMENTS. EXISTENCE AND LOCATION OF ACTUAL UTILITIES MAY VARY FROM THAT SHOWN. CONTRACTOR MUST VERIFY LOCATION OF ALL UTILITIES BEFORE EXCAVATION.

REVIEW SET-NOT FOR CONSTRUCTION



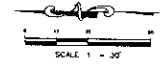
FMG, Inc.
 3700 Sturgis Road
 Rapid City, SD 57705-0317
 www.fmg-engineering.com

File Number	5822
Location	NE 1/4 SECTION 19 T14N, R06E, S04W
Surveyed By	VA/TJ
Date	APRIL 2022
Designed By	
Drawn By	KJS/SP
Checked By	SP

**COMMUNITY ALTERNATIVES
 OF THE BLACK HILLS
 RAPID CITY, SD**

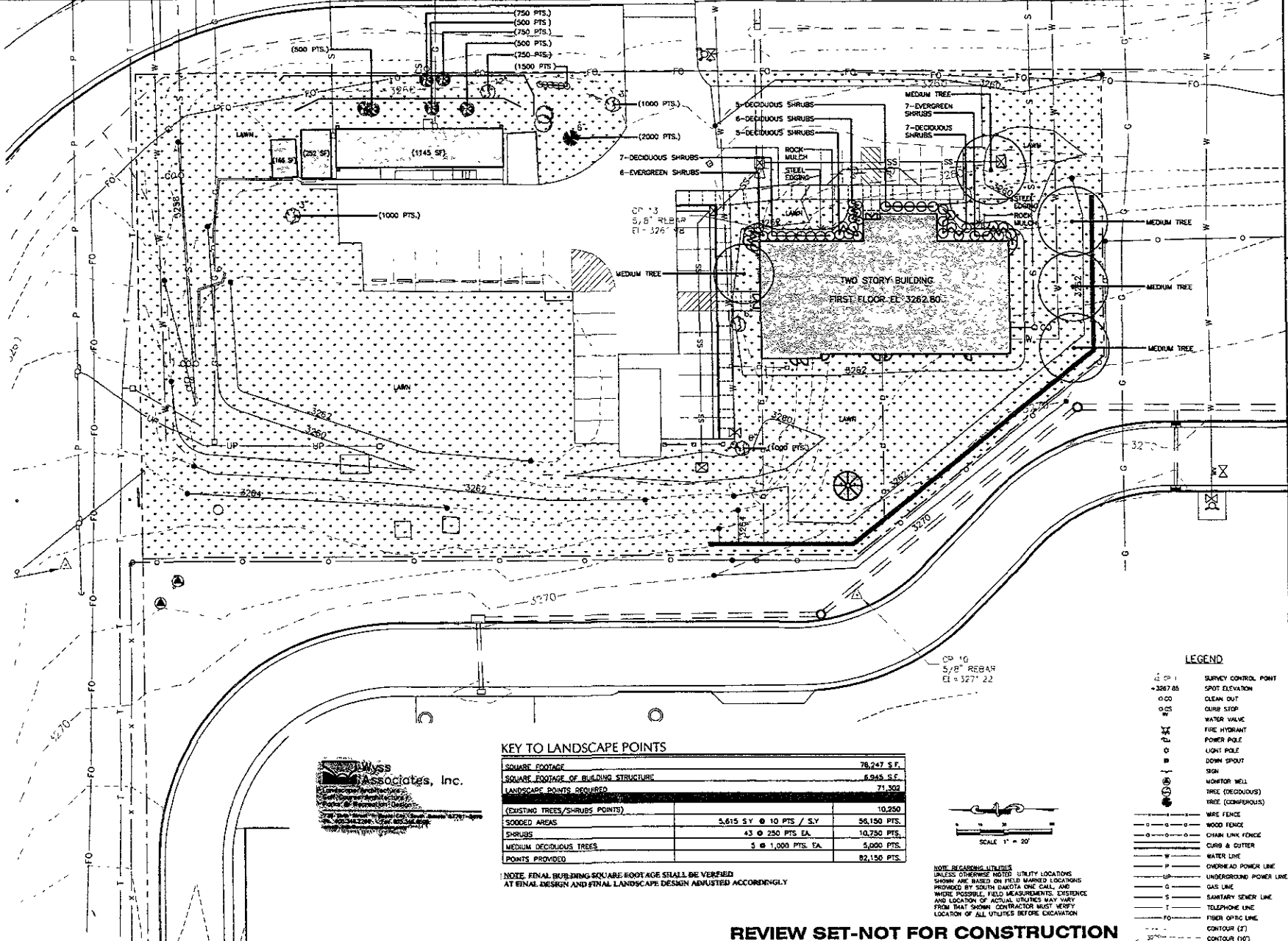
Revision / Date	
Sheet Name:	
GRADING PLAN	
Sheet Number	

- LEGEND**
- SURVEY CONTROL POINT
 - SPOT ELEVATION
 - CLEAN OUT
 - CURB STOP
 - WATER VALVE
 - FIRE HYDRANT
 - POWER POLE
 - LIGHT POLE
 - DOWN SPOUT
 - SIGN
 - MONITOR WELL
 - TREE (DECIDUOUS)
 - TREE (CONIFEROUS)
 - BUSH (DECIDUOUS)
 - BUSH (CONIFEROUS)
 - WIRE FENCE
 - WOOD FENCE
 - CHAIN LINK FENCE
 - CURB & GUTTER
 - WATER LINE
 - OVERHEAD POWER LINE
 - UNDERGROUND POWER LINE
 - GAS LINE
 - SEWER LINE
 - SAFETY SEWER LINE
 - TELEPHONE LINE
 - FIBER OPTIC LINE
 - CONTOUR (2')
 - CONTOUR (10')



NOTE REGARDING UTILITIES
 UNLESS OTHERWISE NOTED UTILITY LOCATIONS
 SHOWN ARE BASED ON FIELD MARKED LOCATIONS
 PROVIDED BY SOUTH DAKOTA ONE CALL AND
 WHERE POSSIBLE FIELD MEASUREMENTS. EXISTENCE
 AND LOCATION OF ACTUAL UTILITIES MAY VARY
 FROM THAT SHOWN. CONTRACTOR MUST VERIFY
 LOCATION OF ALL UTILITIES BEFORE EXCAVATION.

REVIEW SET-NOT FOR CONSTRUCTION



FMG, Inc.
 3700 Sturgis Road
 Rapid City, SD 57702-0317
 (605) 342-4222
 www.fmgengineering.com

File Number: 0505
 Location: NE 1/4 SECTION 19
 T1N 18E, R10W
 Surveyed By: MAM/JY
 Date: APRIL 2005
 Designed By: MAM
 Drawn By: AKM
 Checked By: MAM

**COMMUNITY ALTERNATIVES
 OF THE BLACK HILLS
 RAPID CITY, SD**

Revision / Date
 Sheet Name:
LANDSCAPE PLAN
 Sheet Number:

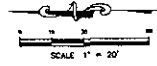
KEY TO LANDSCAPE POINTS

SQUARE FOOTAGE		78,247 S.F.
SQUARE FOOTAGE OF BUILDING STRUCTURE		6,245 S.F.
LANDSCAPE POINTS REQUIRED		71,302
(EXISTING TREES/SHRUBS POINTS)		10,250
SCOOBED AREAS	5,615 S.Y. @ 10 PTS. / S.Y.	56,150 PTS.
SHRUBS	43 @ 250 PTS. EA.	10,750 PTS.
MEDIUM DECIDUOUS TREES	5 @ 1,000 PTS. EA.	5,000 PTS.
POINTS PROVIDED		82,150 PTS.

NOTE: FINAL BUILDING SQUARE FOOTAGE SHALL BE VERIFIED AT FINAL DESIGN AND FINAL LANDSCAPE DESIGN ADJUSTED ACCORDINGLY.

LEGEND

- △ CP 1 SURVEY CONTROL POINT
- + 3267.85 SPOT ELEVATION
- ○ ○ ○ CLEAN OUT
- ○ ○ ○ CURB STOP
- ○ ○ ○ WATER VALVE
- ○ ○ ○ FIRE HYDRANT
- ○ ○ ○ POWER POLE
- ○ ○ ○ LIGHT POLE
- ○ ○ ○ DOWN SPOUT
- ○ ○ ○ SIGN
- ○ ○ ○ MONITOR WELL
- ○ ○ ○ TREE (DECIDUOUS)
- ○ ○ ○ TREE (CONIFEROUS)
- WOOD FENCE
- CHAIN LINK FENCE
- CURB & GUTTER
- WATER LINE
- OVERHEAD POWER LINE
- UP UNDERGROUND POWER LINE
- GAS LINE
- SANITARY SEWER LINE
- TELEPHONE LINE
- FIBER OPTIC LINE
- CONTOUR (2')
- CONTOUR (10')



NOTE: REGARDING UTILITIES UNLESS OTHERWISE NOTED UTILITY LOCATIONS SHOWN ARE BASED ON FIELD MARKED LOCATIONS PROVIDED BY SOUTH DAKOTA ONE CALL AND WHERE POSSIBLE, FIELD MEASUREMENTS. EXISTENCE AND LOCATION OF ACTUAL UTILITIES MAY VARY FROM THAT SHOWN. CONTRACTOR MUST VERIFY LOCATION OF ALL UTILITIES BEFORE EXCAVATION.

REVIEW SET-NOT FOR CONSTRUCTION

