

05SR052

western wireless
 WESTERN WIRELESS
 3008 17th AVENUE NE, #400
 BELLEVUE, WASHINGTON 98005
 PHONE: (425) 884-4725
 FAX: (425) 598-8815

Faulk & Foster
 1811 AUBREY LN AVE
 MONROE, LA 71201
 PHONE (338) 325-4666
 FAX (338) 325-6024

ASSOCIATED ENGINEERING, PC
 157 NORTH MAIN STREET
 ELIZABETH, NJ 08802
 TEL: (609) 288-5040
 FAX: (609) 288-5045



SIGNED 08/16/2005
 EXPRES 01/31/2007

CURRENT ISSUE DATE
08/16/05
RELEASE
DATE DESCRIPTION
08/16/05 FINAL
08/02/05 PRELIMINARY

**-FINAL-
 RELEASED FOR
 CONSTRUCTION**

SITE NAME

RAPID CITY NE

SITENUMBER

SDRC

AEPG JOB NO. DRAWING

1236 DRAWN BY: BT/BAK
 CHECKED BY: TM
 APPROVED BY: TM

SITE ADDRESS (SHOW EXIST)

2316 DISTRIBUTION LN
 SIOUX FALLS, SD 57701

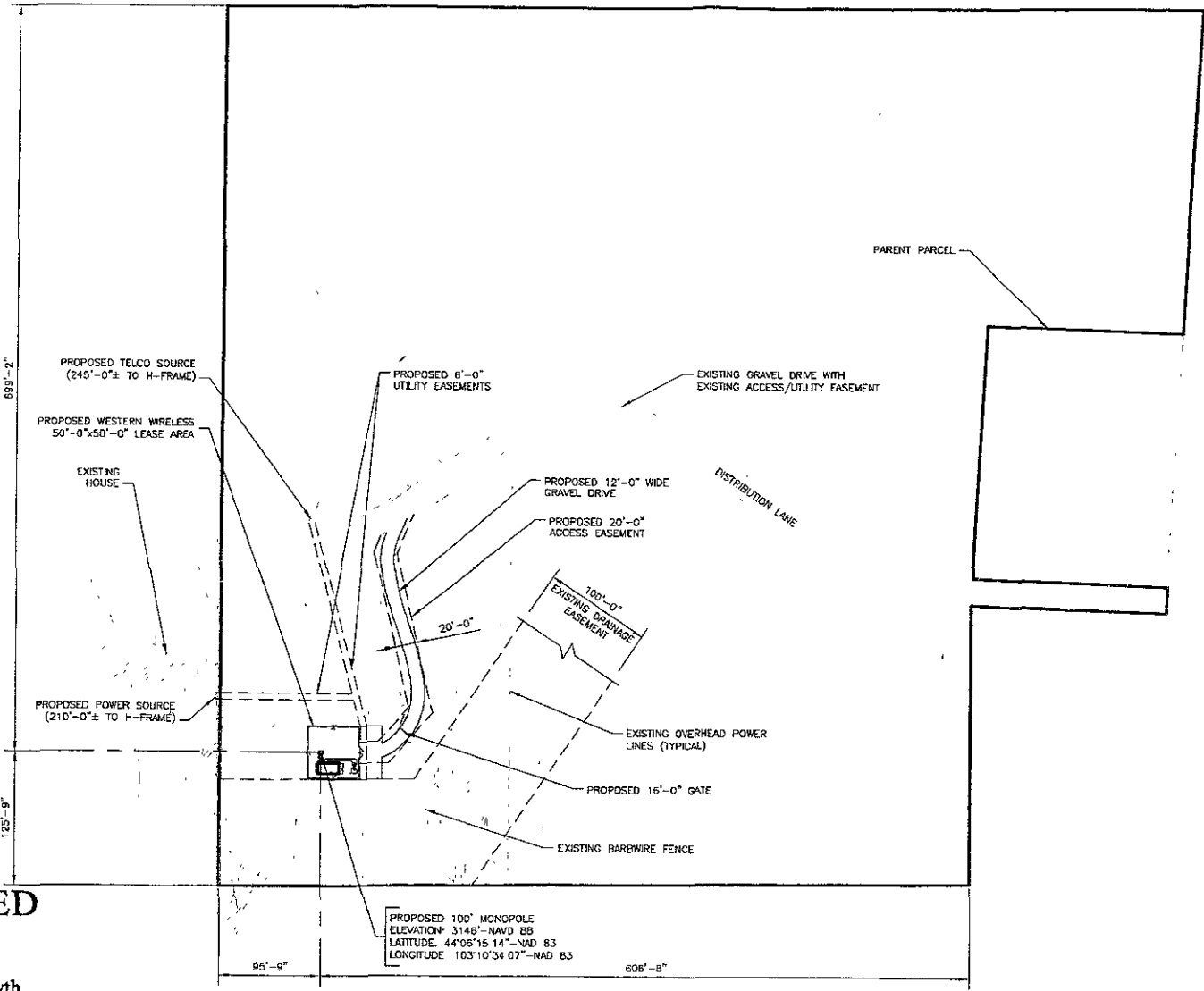
SHEET TITLE

SITE PLAN

SHEET NUMBER

C-1

PLOT SCALE: PAPER SIZE 24"x36"

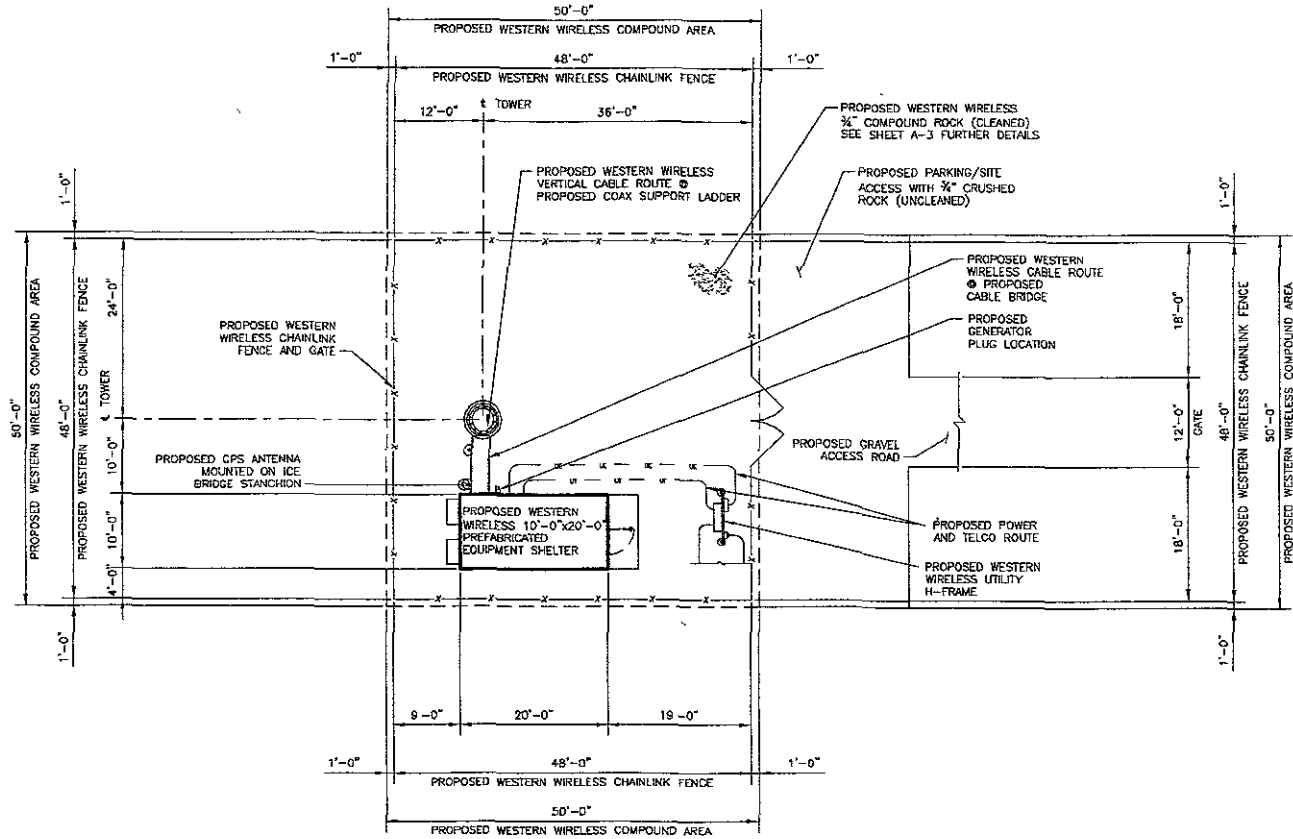


PROPOSED 100' MONOPOLE
 ELEVATION: 3148'-NAVD 85
 LATITUDE: 44°06'15.14"-NAD 83
 LONGITUDE: 103°10'34.07"-NAD 83

RECEIVED

SEP 09 2005

Rapid City Growth Management Department
SITE PLAN
 SCALE 1" = 20'-0"



NOTE
 1. SITE PLAN IS A DIAGRAMMATIC REPRESENTATION ONLY. DO NOT SCALE, VERIFY ALL DIMENSIONS.
 2. VERIFY ALL PROPERTY LINE INFORMATION WITH EXISTING SURVEY DATA.
 3. AN 8 FOOT WIDE NON-EXCLUSIVE UTILITY EASEMENT TO ALL PUBLIC OR PRIVATE UTILITIES FOR PUBLIC UTILITY PURPOSES INCLUDING CONSTRUCTION, INSTALLATION, MAINTENANCE AND OPERATION OF THEIR RESPECTIVE FACILITIES.

NOTE

RECEIVED

SEP 09 2005

Rapid City Growth Management Department

1 ENLARGED SITE PLAN

SCALE 1/8" = 1'-0"

western wireless
 WESTERN WIRELESS
 2002 21st AVENUE SE, 840
 BELLEVUE, WASHINGTON 98006
 PHONE: (425) 886-8723
 FAX: (425) 734-6115

Faulk & Foster
 281 ALBURN AVE.
 MONROE, LA 70201
 PHONE (713) 325-4544
 FAX (338) 325-6324

ASSOCIATED ENGINEERING, PC
 157 NORTH MAIN STREET
 ELIZABETH, NC 28222
 PH: (405) 785-5044
 FAX (405) 825-5045

REGISTERED PROFESSIONAL ENGINEER
 REG. NO. 8488
 JON MEDHI
 STATE BAROYA

SIGNED 08/16/2005
 EXPIRES 01/31/2007

CURRENT ISSUE DATE

08/16/05	RELEASE
DATE	DESCRIPTION
08/16/05	FINAL
08/09/05	PRELIMINARY

FINAL-RELEASED FOR CONSTRUCTION

SITE NAME: **RAPID CITY NE**

SITE NUMBER: **SDRC**

AEPC JOB NO. | DRAWINGS: **1236**

DRAWN BY: **STRYKAK**
 CHECKED BY: **TM**
 APPROVED BY: **TM**

SITE ADDRESS (NON EST): **2316 DISTRIBUTION LN SIOUX FALLS, SD 57701**

DRAWING TITLE: **ENLARGED SITE PLAN**

SHEET NUMBER: **C-2**

PLOT SCALE: PAPER SIZE 24"x36"