

NOTE:
SECURE CABLES TO GRATING WITH SS CABLE CLAMPS AT 3'-0" O.C.

1 ANTENNA MOUNT DETAIL
SCALE: NTS

ANTENNA LEGEND FOR CDMA

ANTENNA	SECTOR	ANTENNA MODEL	ANTENNA VENDOR	AZIMUTH (TN)	DOWN TILT (DEGREES)	ANTENNA TYPE	MOUNT HEIGHT	MOUNT AZIMUTH	RAD CENTER	COAX DIAMETER	COLOR CODE	BRASS TAG INFO
1	ALPHA	WPA-80063/BCF	ANTEL	0'	0'	PANEL	100±	10	104±	7/8"	R O O O	X, TX/RX, CDMA, 104, 10'
2	ALPHA	WPA-80063/BCF	ANTEL	0'	0'	PANEL	100±	10'	104±	7/8"	R O O O	X, RX, CDMA, 104, 10'
3	BETA	WPA-80063/BCF	ANTEL	110'	0'	PANEL	100±	130'	104±	7/8"	B O O O	Y, TX/RX, CDMA, 104, 130'
4	BETA	WPA-80063/BCF	ANTEL	110'	0'	PANEL	100±	130'	104±	7/8"	B O O O	Y, RX, CDMA, 104, 130'
5	GAMMA	WPA-80063/BCF	ANTEL	270'	0'	PANEL	100±	250'	104±	7/8"	W O O O	Z, TX/RX, CDMA, 104, 250'
6	GAMMA	WPA-80063/BCF	ANTEL	270'	0'	PANEL	100±	250'	104±	7/8"	W O O O	Z, RX, CDMA, 104, 250'

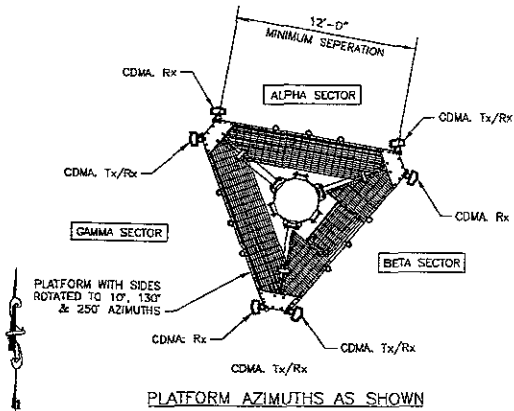
2 ANTENNA SCHEDULE NOTE: ANTENNA SCHEDULE INFORMATION IS FROM DOCUMENT SDR_C_RAPIDCITY ENGINEERING(1) - VERSION 5/10/2005

ANTENNA NOTES

- VERIFY AZIMUTH, TYPE & QUANTITY OF EACH ANTENNA PER RF DESIGN
- FIELD VERIFY EXACT LOCATION OF (1) GPS ANTENNA
- SECTOR IDENTIFICATION NORMALLY A SITE WILL HAVE UP TO THREE SECTORS, NUMBERING EACH IN A CLOCKWISE MANNER SHALL DESIGNATE SECTORS, THE FIRST SECTOR IS THE ONE CLOSEST TO ZERO DEGREES (NORTH) THE SECOND AND THIRD FOLLOW CLOCKWISE IN SEQUENCE.
- SECTOR COLOR CODE IDENTIFICATION.
 - SECTOR #1 (ALPHA): RED
 - SECTOR #2 (BETA): BLUE
 - SECTOR #3 (GAMMA): WHITE
- OMNI IDENTIFICATION IDENTIFY THE OMNI ANTENNA LOCATION RELATIVE TO THE CARDINAL DIRECTIONS.
- COLOR CODE LOCATIONS COLOR CODES UTILIZING COLORED ELECTRICAL TAPE TO FORM BANDS ON THE COAX SHALL BE LOCATED AT THE FOLLOWING LOCATIONS USING 1" WIDE WEATHER-PROOF COLORED VINYL TAPE, AS FOLLOWS.
 - A. ON THE COAX AT THE CONNECTOR NEAREST THE ANTENNA (WHERE THE COAX AND JUMPER ARE CONNECTED).
 - B. ON THE COAX OUTSIDE THE COAX PORT AT THE BASE OF THE TOWER
 - C. ON THE COAX JUST INSIDE THE COAX PORT AND BEFORE THE JUMPER TO THE EQUIPMENT
 - D. ON THE END OF THE JUMPER NEAREST THE COAX PORT
 - E. ON THE JUMPER AT A POINT OUTSIDE JUST THE EQUIPMENT CABINET AND PRIOR TO MGB

- CONTRACTOR TO PROVIDE COMPLETE SHOP DRAWINGS FOR REVIEW PRIOR TO FABRICATION
- CONTRACTOR TO NOTIFY PROJECT MANAGER OF ANY DISCREPANCIES WITH THE PROPOSED LAYOUT PRIOR TO PROCEEDING
- ALL PIPES, BRACKETS, PLATES AND MISC HARDWARE TO BE GALVANIZED UNLESS OTHERWISE NOTED
- ALL ANTENNA AND COAXIAL ANTENNA CABLE TO BE FURNISHED BY LESSEE/OPERATOR AND INSTALLED BY CONTRACTOR
- ALL HARDWARE AND CONNECTORS TO BE GALVANIZED UNLESS OTHERWISE NOTED
- ANTENNA MOUNT DETAILS SHOWN IN THIS DRAWING SET ARE FOR INFORMATION AND LAYOUT ONLY DESIGN AND ANALYSIS BY OTHERS

3 ANTENNA NOTES
SCALE: NTS



ALPHA SECTOR - ANTENNAS AT 0'

BETA SECTOR - ANTENNAS AT 110'

GAMMA SECTOR - ANTENNAS AT 270'

PLATFORM AT 10 DEG AZIMUTH

PLATFORM AT 130 DEG. AZIMUTH

PLATFORM AT 250 DEG AZIMUTH

4 ANTENNA MOUNT PLAN
SCALE: NTS

RECEIVED

SEP 09 2005

Rapid City Growth Management Department

western wireless
WESTERN WIRELESS
3600 13TH AVENUE NE, 3400
BELLEVUE, WASHINGTON 98005
PHONE: (425) 886-0725
FAX: (425) 886-0515

Faulk & Foster
1813 AUBURN AVE.
MONROE, LA 71201
PHONE: (504) 335-4666
FAX: (516) 325-6324

ASSOCIATED ENGINEERING, PC
107 NORTH MAIN STREET
EL DORNO, MO 63022
PH: (402) 285-5040
FAX: (402) 285-5045

REGISTERED PROFESSIONAL ENGINEER
8498
TOM
MEDHIF
1001 NORTH BROAD

SIGNED 09/16/2005
EXPRES 01/31/2007

CURRENT ISSUE DATE

08/16/05	RELEASE
DATE	DESCRIPTION
08/16/05	FINAL
08/09/05	PRELIMINARY

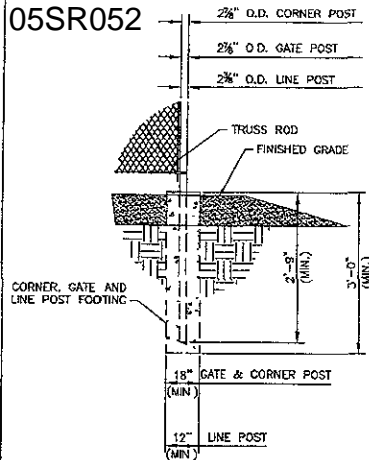
**-FINAL-
RELEASED FOR
CONSTRUCTION**

WTE:NAME
RAPID CITY NE
WTE:NUMBER
SDRC
AEP:JOB NO. DRAWINGS
1236 DRAWN BY: DEBRAK
CHECKED BY: TM
APPROVED BY: TM

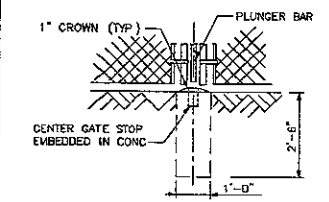
WTE:ADDRESS (FROM EIR)
2315 DISTRIBUTION LN
SIOUX FALLS, SD 57701

WTE:TITLE
**ANTENNA SCHEDULE
& ANTENNA DETAILS**
WTE:NUMBER
A-2
PLOT SCALE: PAPER SIZE 24"x36"

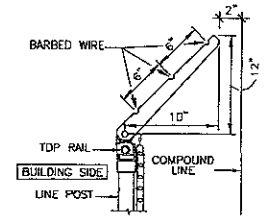
05SR052



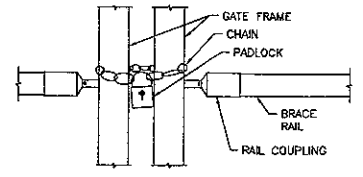
1 DETAIL POST FOOTING
SCALE NTS



5 DETAIL - MUSHROOM CAP
SCALE NTS



2 DETAIL POST (END, CORNER & PULL)
SCALE NTS

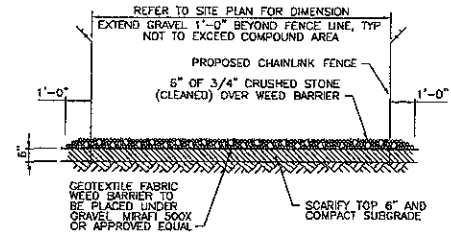


6 DETAIL - CHAIN AND PADLOCK
SCALE NTS

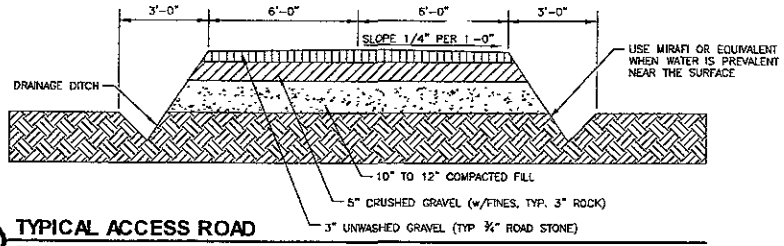
TYPICAL WOVEN WIRE FENCING NOTES.

- (INSTALL FENCING PER ASTM F-567, SWING GATES PER ASTM F-900)
- GATE POST, CORNER, TERMINAL OR PULL POST 2" DIA. SCH. 40 FOR GATE WIDTHS UP THRU 6 FEET OR 12 FEET FOR DOUBLE SWING GATE PER ASTM-F1083
 - LINE POST 2 1/2" DIA (SCHEDULE 40) PIPE PER ASTM-F1083
 - GATE FRAME 1 1/2" DIA (SCHEDULE 40) PIPE PER ASTM-F1083
 - TOP RAIL & BRACE RAIL 1" DIA. (SCHEDULE 40) PIPE PER ASTM-F1083.
 - FABRIC #9-GAUGE, 2X" MESH; GALVANIZED CONFORMING TO ASTM-A392, CLASS 2, TWISTED SELVAGE ON TOP, KNUCKLED SELVAGE ON BOTTOM
 - TIE WIRE MINIMUM 9 GA. GALVANIZED STEEL AT POSTS AND RAILS A SINGLE WRAP OF FABRIC TIE AND AT TENSION WIRE BY HOG RINGS SPACED MAX 24" INTERVALS.
 - TENSION WIRE 9 GA. GALVANIZED COIL SPRING WIRE
 - BARBED WIRE. GALVANIZED, ASTM A121 CLASS 3, (3) 14 GAUGE MIN STEEL WIRES W/4 PT ROUND 14 GA. BARBS SPACED ON 4" CENTERS.
 - GATE LOCK. VERIFY TYPE WITH CONSTRUCTION MANAGER FOR APPROVAL
 - LOCAL ORDINANCE OF BARBED WIRE PERMIT REQUIREMENT SHALL BE COMPLIED IF REQUIRED.
 - TOTAL HEIGHT, 6'-0" VERTICAL + 1'-0" BARBED WIRE = 7'-0" VERTICAL DIMENSION.

3 NOTES

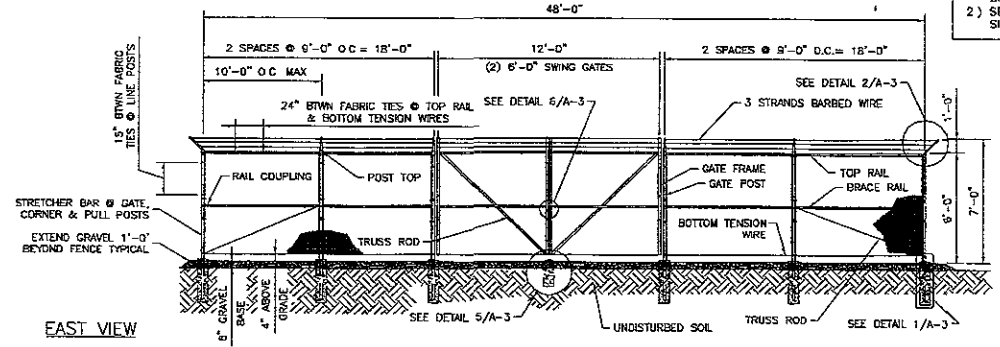


4 SITE COMPOUND GRAVEL DETAIL
SCALE NTS



7 TYPICAL ACCESS ROAD
SCALE NTS

- NOTES.**
- ALL FABRIC & STEEL FRAMEWORK SHALL BE GALVANIZED
 - SEE FENCING NOTES FOR ALL SIZES AND TYPES OF PARTS



8 WOVEN WIRE FENCE & SWING GATE DETAIL
SCALE NTS

western wireless
WESTERN WIRELESS
3000 17TH AVENUE NE, #400
BELLEVUE, WASHINGTON WA98008
PHONE: (425) 884-4725
FAX: (425) 386-0815

Faulk & Foster
1011 ALLIANCE AVENUE
MONROE, LA 70201
PHONE: (504) 335-4466
FAX: (504) 325-6291

ASSOCIATED ENGINEERS, P.C.
157 NORTH MAIN STREET
DUNMORE, PA 15202
PA (412) 398-5040
FAX (412) 288-5645

REGISTERED PROFESSIONAL ENGINEER
EXPIRES 12/31/2011
8458
TOM MEDHI
SOUTH DAKOTA

SIGNED 08/18/2005
EXPIRES 01/31/2007

CURRENT ISSUE DATE	
08/16/05	RELEASE
DATE	DESCRIPTION
06/15/05	FINAL
08/09/05	PRELIMINARY

FINAL-RELEASED FOR CONSTRUCTION

SHEET NAME
RAPID CITY NE
SHEET NUMBER

SDRC
AEPG JOB NO. | DRAWINGS
1236
DRAWN BY: BTM/MAK
CHECKED BY: TM
APPROVED BY: TM

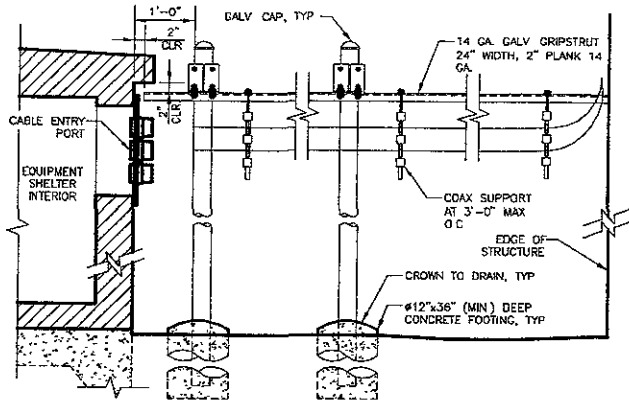
SITE ADDRESS (NONE/PH)
2316 DISTRIBUTION LN
SIOUX FALLS, SD 57701

SHEET TITLE
FENCE & SITE DETAILS

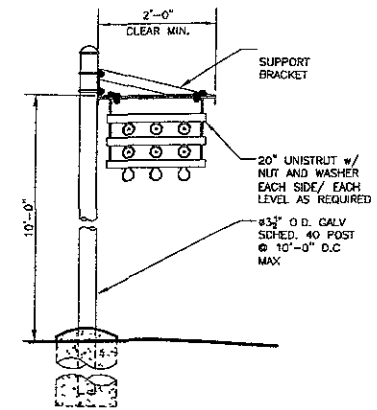
SHEET NUMBER

A-3
PLOT SCALE: PAPER SIZE 24"x36"

RECEIVED
SEP 09 2005
Rapid City Growth
Management Department

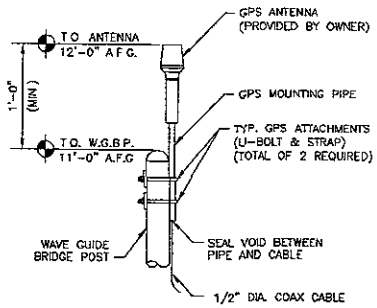


1 TYPICAL WAVEGUIDE BRIDGE SECTION
SCALE: NTS



- NOTES**
- ERECTION OF STRUCTURAL STEEL SHALL BE IN ACCORDANCE WITH THE AISC MANUAL OF STEEL CONSTRUCTION (LATEST EDITION)
 - ALL STEEL SHALL MEET THE REQUIREMENTS OF ASTM-A36 EXCEPT STEEL PIPE WHICH SHALL MEET THE REQUIREMENTS OF ASTM-A53, GRADE B.
 - ALL STEEL SHALL BE HOT-DIPPED GALVANIZED AFTER FABRICATION IN ACCORDANCE WITH ASTM-123 OR A-153
 - HARDWARE SHALL BE GALVANIZED UNLESS NOTED OTHERWISE
 - BOLTS SHALL MEET THE REQUIREMENTS OF ASTM A325, U.N.O.
 - FIELD CUTS OR FIELD DRILLED HOLES SHALL BE SPRAYED WITH GALVALUME ZINC-RICH PAINT OR EQUAL
 - FIELD MODIFICATIONS SHALL NOT BE MADE WITHOUT APPROVAL OF THE OWNER'S FIELD MANAGER
 - CUT BRIDGE CHANNEL SECTIONS SHOULD HAVE RAW EDGES TREATED WITH A MATERIAL TO RESTORE THE EDGES TO THE ORIGINAL CHANNEL, DR EQUIVALENT, FINISH
 - CONTRACTOR SHALL VERIFY COAX ROUTING

2 NOTES
SCALE: NTS



- NOTES:**
- COORDINATE GPS ANTENNA LOCATION WITH CONSTRUCTION MANAGER
 - MAINTAIN MINIMUM BEND RADIUS ON COAX CABLE AT ALL TIMES.
 - ENSURE LOCATION OF GPS ANTENNA ALLOWS FOR CLEAR VIEW OF SOUTHERN HORIZON

WAVEGUIDE MOUNTING

3 GPS ANTENNA MOUNTING DETAIL
SCALE: NTS

RECEIVED

SEP 09 2005

Rapid City Growth Management Department

western wireless
WESTERN WIRELESS
3640 13TH AVENUE SE, #40
BELLEVUE, WASHINGTON 98006
PHONE: (206) 884-8795
FAX: (206) 884-8915

Faulk & Foster
1311 AUBURN AVE.
MONROE, LA 70601
PHONE (512) 325-4666
FAX (512) 325-4324

ASSOCIATED ENGINEERS, P.C.
157 NORTH MAIN STREET
LUXEMBOURG, NE 68022
PH: (402) 788-5040
FAX: (402) 788-5040

REGISTERED PROFESSIONAL ENGINEER
REG. NO. 8488
RON MEDHI
SOUTH DAKOTA

SIGNED 08/16/2005
EXPIRES 01/31/2007

CURRENT REVISION DATE	
08/16/05	
RELEASE DATE	DESCRIPTION
08/16/05	FINAL
06/09/05	PRELIMINARY

**-FINAL-
RELEASED FOR
CONSTRUCTION**

SITE NAME

RAPID CITY NE

SITE NUMBER

SDRC

AEPG JOB NO. | DRAWINGS
1236
DRAWN BY: BT/NAK
CHECKED BY: TM
APPROVED BY: TM

SITE ADDRESS (NON DEDIC)
2316 DISTRIBUTION LN
SIOUX FALLS, SD 57701

SHEET TITLE
WAVEGUIDE BRIDGE

SHEET NUMBER

S-2

PLOT SCALE: PAPER SIZE 24"x36"