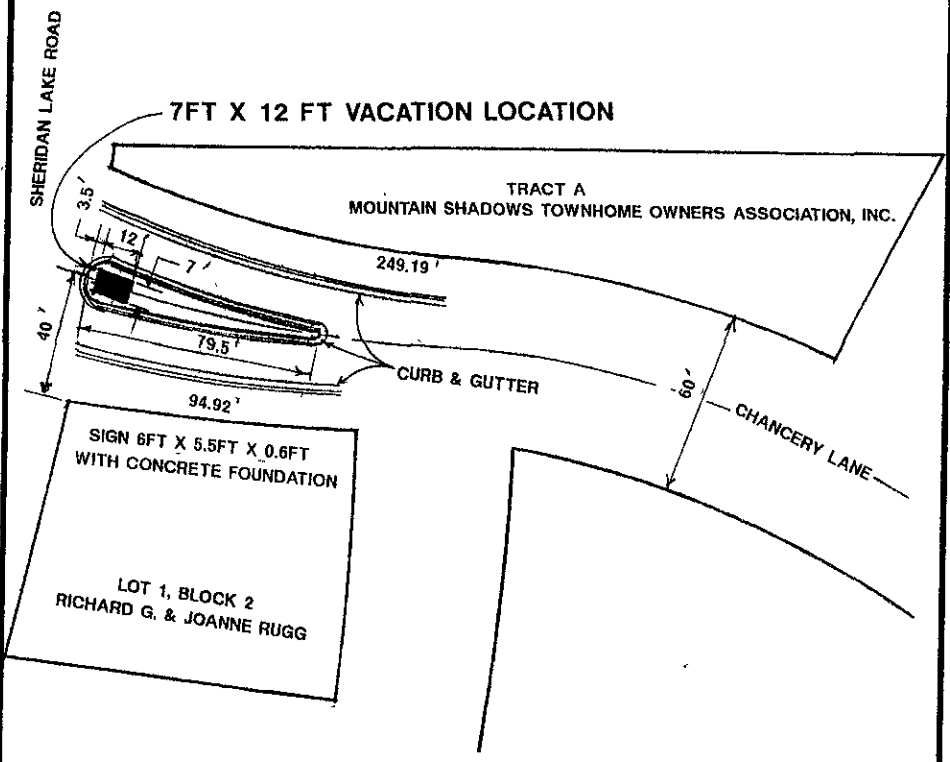


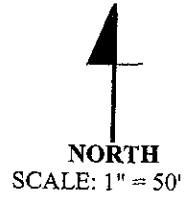
EXHIBIT A CHANCERY LANE ISLAND VACATION

DESCRIPTION OF ISLAND TO BE VACATED: A 7 FT. BY 12 FT. PORTION OF AN ISLAND IN THE CHANCERY LANE PUBLIC RIGHT-OF-WAY ADJACENT TO SHERIDAN LAKE ROAD, SOUTH OF TRACT A AND NORTH OF LOT 1, BLOCK 2, ALL IN MOUNTAIN SHADOWS SUBDIVISION, LOCATED IN THE SW1/4 OF THE SE1/4 OF SECTION 10, T1N, R7E, B.H.M., RAPID CITY, PENNINGTON COUNTY, SOUTH DAKOTA



NOTES:

1. THE PLAT OF MOUNTAIN SHADOWS SUBDIVISION WAS FILED AT THE PENNINGTON COUNTY REGISTER OF DEEDS OFFICE ON JUNE 12, 1984, IN BOOK 19 OF PLATS, PAGE 169.
2. DIMENSIONS SHOWN HEREON FOR THE LOTS ARE RECORDED DIMENSIONS AS SHOWN ON THE PLAT.
3. THE OWNER OF TRACT A IS MOUNTAIN SHADOWS TOWNHOME OWNERS ASSOCIATION, INC. THE OWNERS OF LOT 1, BLOCK 2 ARE RICHARD G. AND JOANNE RUGG



SURVEYORS CERTIFICATE:

I, E. DALLAS WASSERBURGER, A REGISTERED LAND SURVEYOR IN THE STATE OF SOUTH DAKOTA, DO HEREBY CERTIFY THAT AT THE DIRECTION OF THE MOUNTAIN SHADOWS TOWNHOME OWNERS ASSOCIATION, INC., I HAVE REEXAMINED FROM RECORD DOCUMENTS AND FIELD MEASUREMENTS THE ISLAND VACATION LOCATION AS SHOWN HEREON.

2740
E. Dallas Wasserburger
 E. DALLAS WASSERBURGER, P.E. & L.S.

DATE PREPARED: AUGUST 20, 2005

SECTION 10, T1N, R7E, B.H.M.

SHEET 1 OF 1

