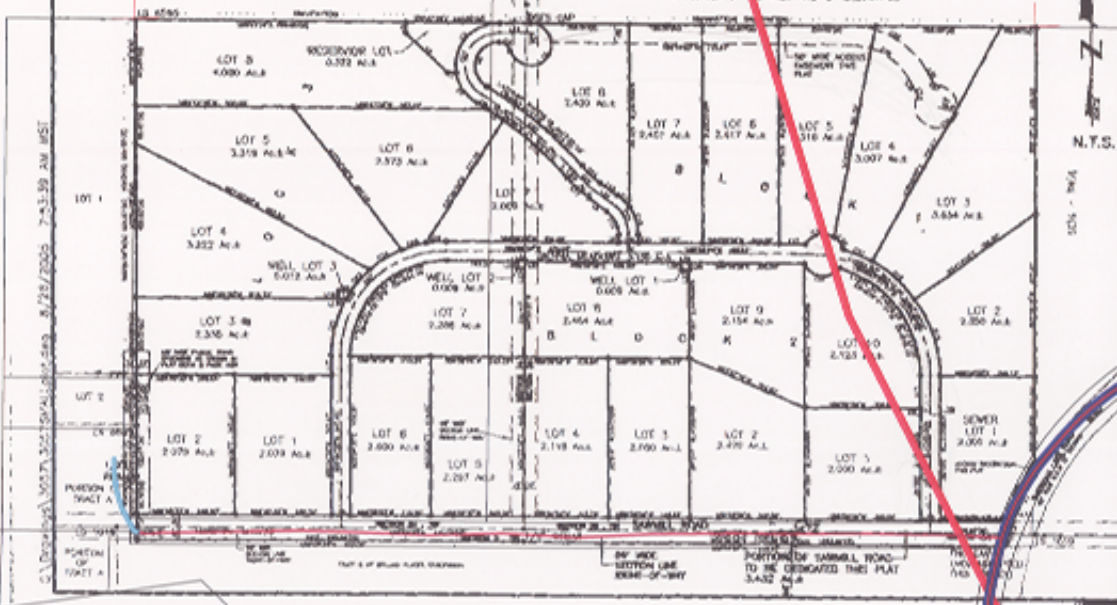


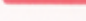



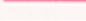


PLAT OF
SEWER LOT 1 AND LOTS 2 THROUGH 3 OF BLOCK 1, LOTS 1
THROUGH 10 OF BLOCK 2, LOTS 1 THROUGH 8 OF BLOCK 3,
RESERVOIR LOT, AND WELL LOT 1 THROUGH WELL LOT 3, AND
DEDICATED RIGHT-OF-WAY OF SAWMILL ROAD, SIENNA MEADOWS, AND
IRONWOOD RIDGE,
SHERIDAN LAKE HIGHLANDS
 (formerly a portion of Tract B of the Island Place M.S. 1252, the SW¹/₄ of the SW¹/₄ of Section 35, Less Lot 1-1 of the SE¹/₄ of the SW¹/₄ of Section 35, and the SE¹/₄ of the SE¹/₄ of Section 34, Less Lots 1-4 of the SE¹/₄ of the SE¹/₄)
 LOCATED IN THE SW¹/₄ OF THE SW¹/₄ OF SECTION 35, 2ND. RGE. 81, 1/4M., AND IN THE SE¹/₄ OF THE SE¹/₄ OF SECTION 34, T1N. 19S. R11M.,
 AND IN "GOVERNMENT LOTS 2 THROUGH 4 SECTION 2, 1/4S. R1E. 81M.,
 PENNINGTON COUNTY, SOUTH DAKOTA.



1 inch equals 500 feet

Legend

-  Principal Arterial
-  Proposed Principal
-  Minor Arterial
-  Proposed Minor
-  Collector
-  Proposed Collector
-  3 Mile Platting Limit

PREPARED BY: SPEKLICH CONSULTING, INC. * 661 W. COLUMBUS STREET RAPID CITY SD 57701 * (605) 729-4040