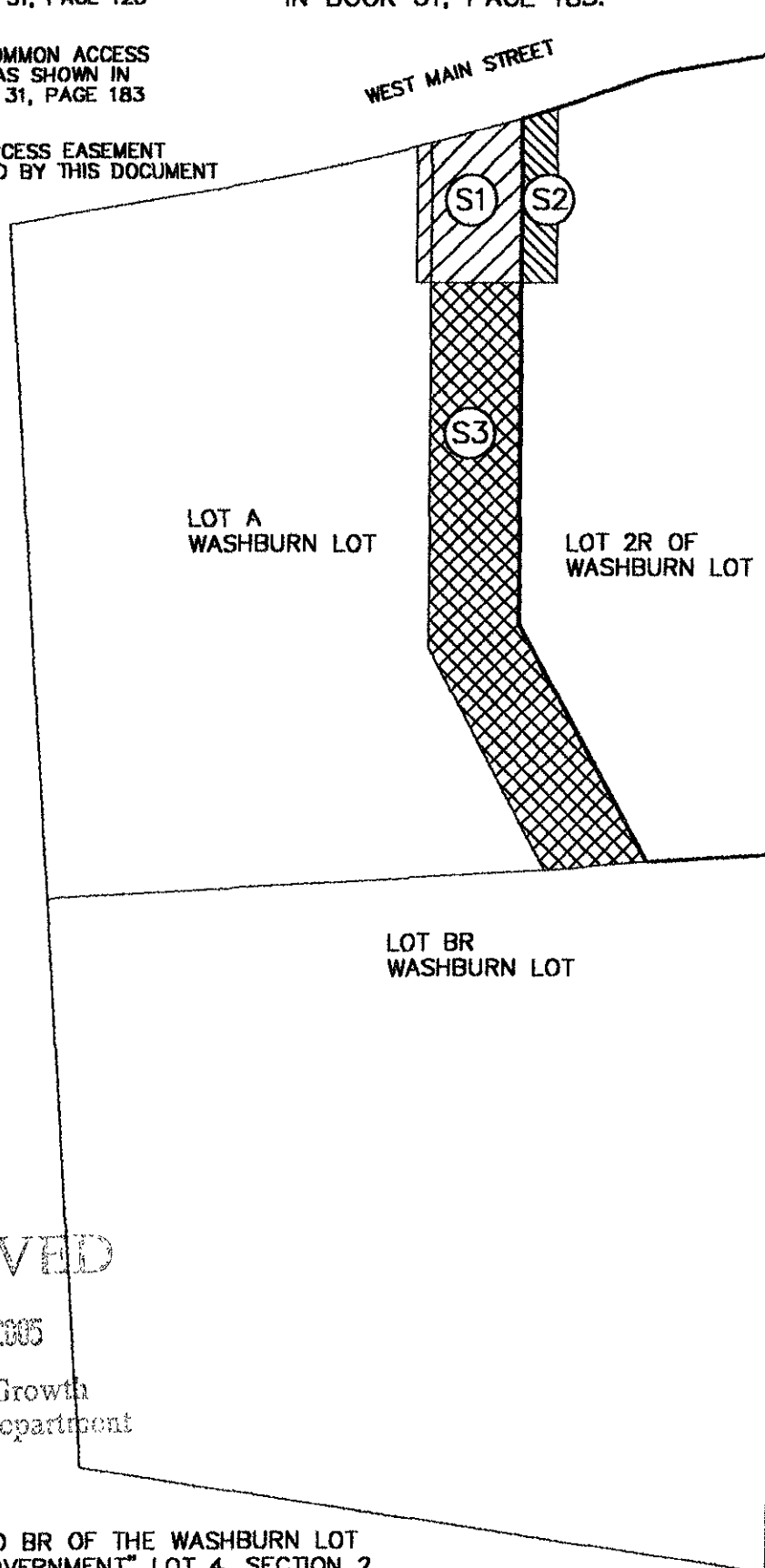


EXHIBIT "A"

DATED 9 AUGUST 2005
DRAWING BASED ON PLAT
IN BOOK 31, PAGE 183.

- (S1) EXISTING COMMON ACCESS
EASEMENT AS SHOWN IN
PLAT BOOK 31, PAGE 123
- (S2) EXISTING COMMON ACCESS
EASEMENT AS SHOWN IN
PLAT BOOK 31, PAGE 183
- (S3) COMMON ACCESS EASEMENT
ESTABLISHED BY THIS DOCUMENT



RECEIVED

AUG 12 2005

Rapid City Growth
Management Department

NORTH
↑

SITE PLAN

SCALE: NTS

LOTS A, 2R AND BR OF THE WASHBURN LOT
LOCATED IN "GOVERNMENT" LOT 4, SECTION 2,
T1N, R7E, B.H.M., RAPID CITY, PENNINGTON COUNTY,
SOUTH DAKOTA.