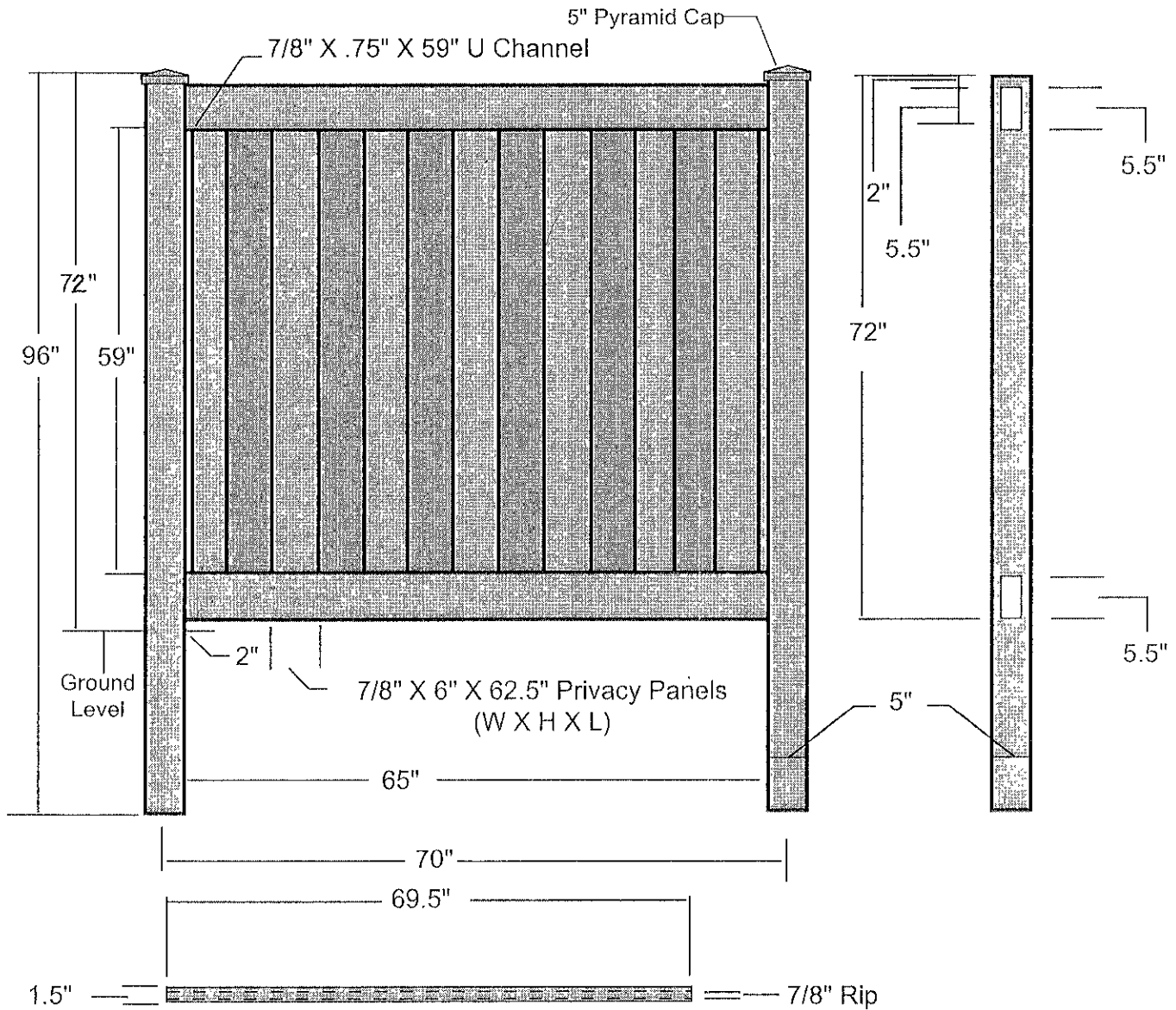


Towne House 72"



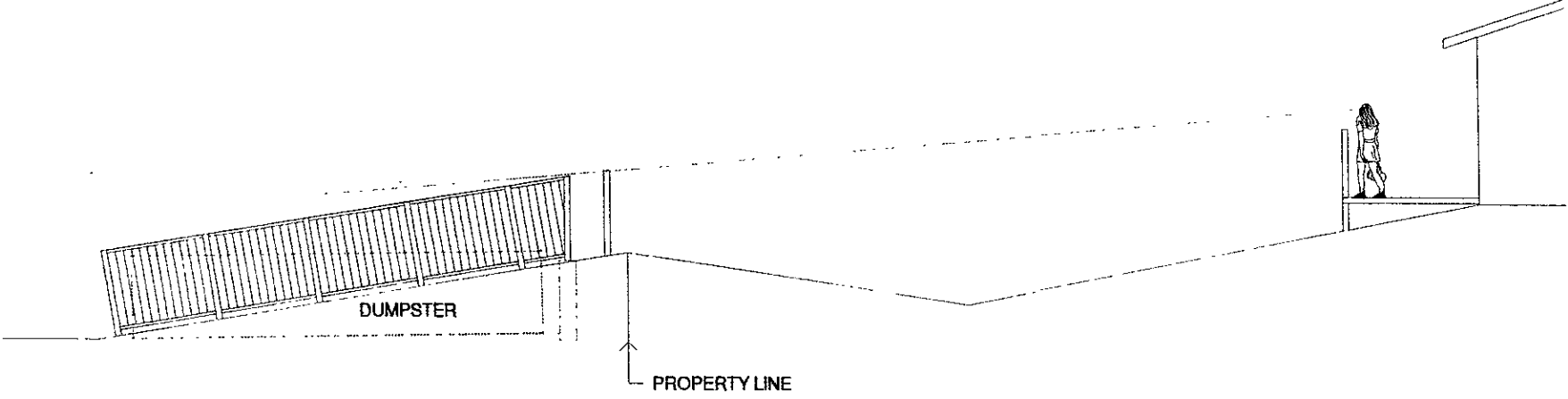
Horizontals are routed into the posts.
 Horizontals are ripped to receive the verticals
 U-channel, when used, is fastened to the posts with screws.

| QTY | Description |
|-----|-----------------------------|
| 12 | 7/8" x 6" privacy panels |
| 2 | 1 1/2" x 5.5" x 69.5" rails |
| 1 | 7/8" x .75" U-channel |
| 1 | 5" x 5" post |
| 1 | pyramid cap |

RECEIVED

AUG 21 2005

Rapid City Growth
 Management Department



Dumpster Elevation Details

Hagen Glass Company
Rapid City, South Dakota

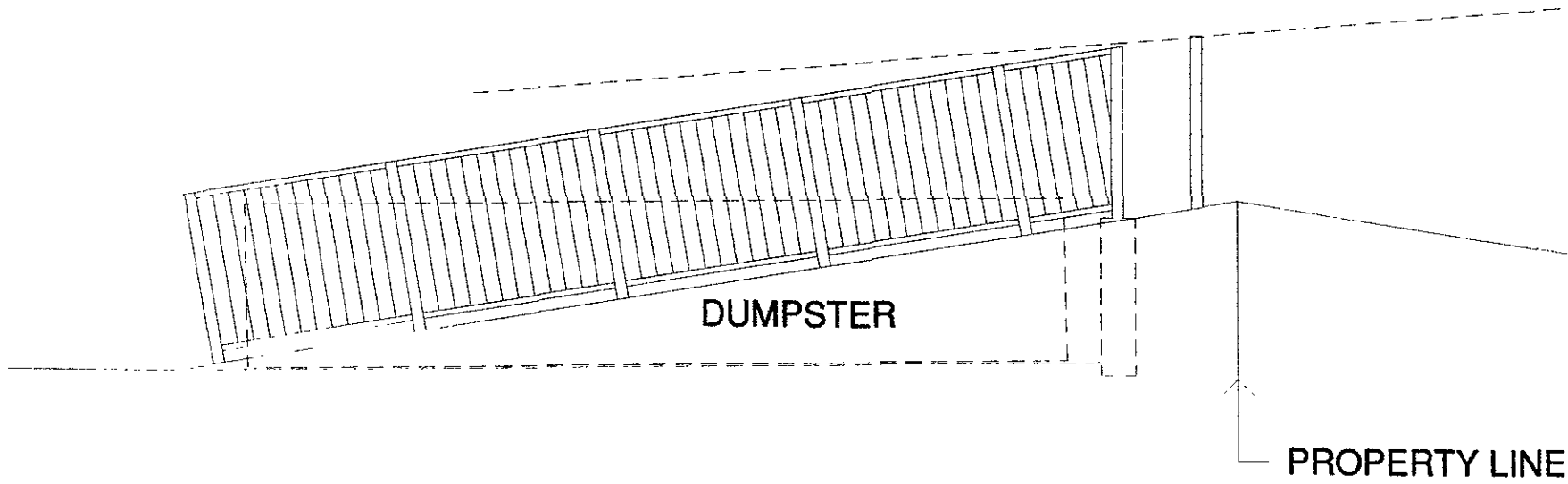


Henriksen, Inc.
526 Saint Joseph Street, Suite A
Rapid City, South Dakota 57701
Phone (605) 394-0189 Fax (605) 341-9288

| | |
|----------------|---------|
| Project Number | 0505 |
| File Name | big.dwg |
| Drawn By | L.L. |
| Checked By | L.H. |
| Date | 8-11-05 |

A2.4

Drawing Number



NORTH ELEVATION

Project Number 04088
 File Name bidg elev
 Drawn By LL
 Checked By LPH
 Date 9-1-05

A2.5

Drawing Number

Henrikson, Inc.
 526 Saint Joseph Street, Suite A
 Rapid City, South Dakota 57701
 Phone (605) 394-0189 Fax (605) 341-9288



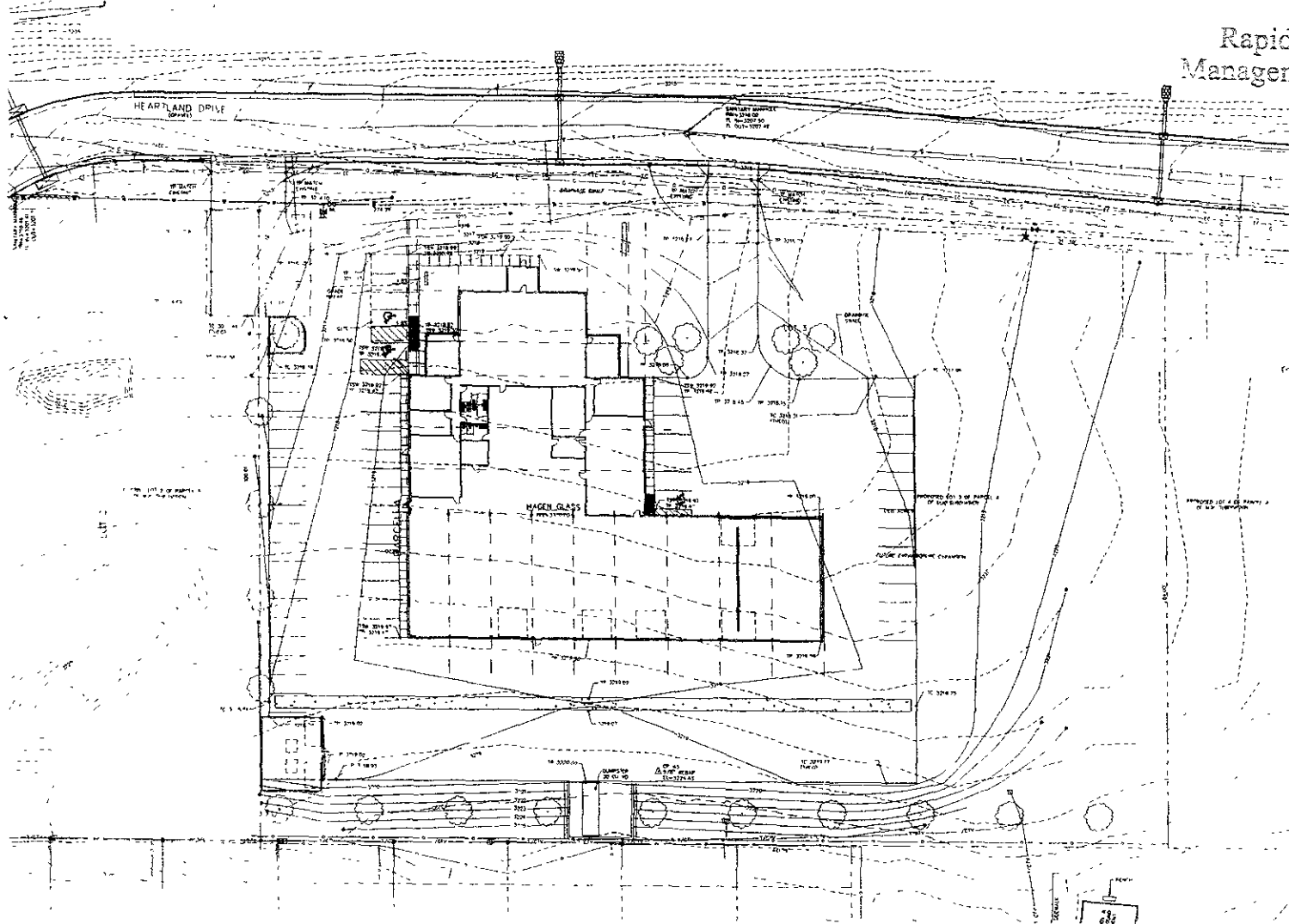
PROPERTY LINE

Dumpster Elevation Details
 Hagen Glass Company
 Rapid City, South Dakota

RECEIVED

AUG 24 2005

Rapid City Growth Management Department



LEGEND

- ▲ Survey Control Point
- Survey Station
- Boundary Line
- Easement
- Utility Line
- Proposed Improvement
- Landscape Point
- Tree (60' min. DBH)
- Tree (30' min. DBH)
- Tree (15' min. DBH)
- Tree (8' min. DBH)
- Tree (4' min. DBH)
- Tree (2' min. DBH)
- Tree (1' min. DBH)
- Shrub
- Other

Landscape Points

- Plant Spacing (min. 20' in. of Existing)
- 10' Spacing = 10000
 - 15' Spacing = 4444
 - 20' Spacing = 2500
 - 25' Spacing = 1500
 - 30' Spacing = 1111
- Plant Spacing (min. 20' in. of Proposed)
- 10' Spacing = 10000
 - 15' Spacing = 4444
 - 20' Spacing = 2500
 - 25' Spacing = 1500
 - 30' Spacing = 1111

APPROVED FOR CONSTRUCTION

DATE _____

BY _____



HagenGlass, Inc.
528 Saint Joseph Street, Suite A
Rapid City, South Dakota 57701
Phone (605) 345-6165 Fax (605) 341-0285

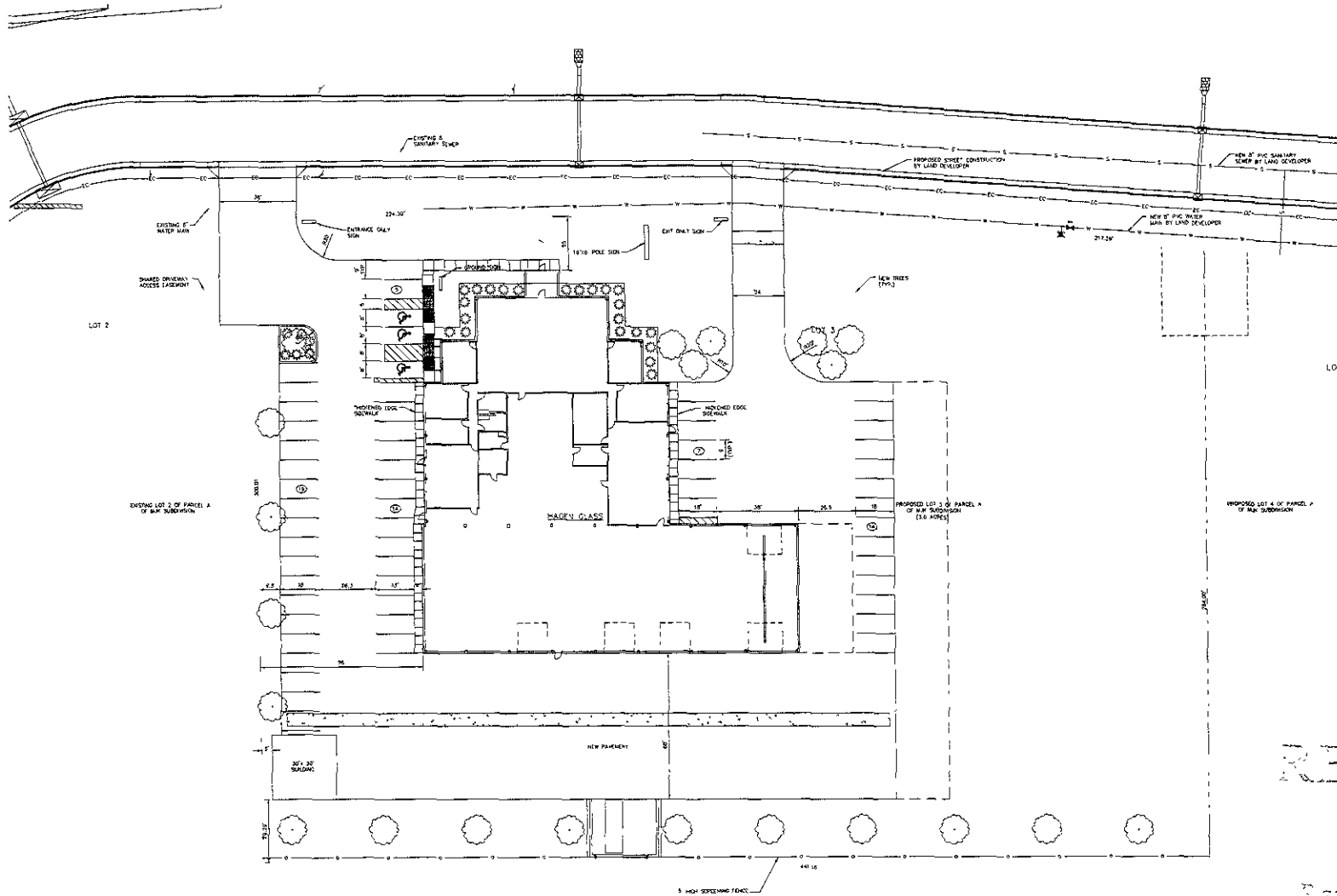


GRADING PLAN
Hagen Glass Company
Rapid City, South Dakota

Preliminary
Not For Construction

C1.1

Dwelling Member



LEGEND

- ⊙ CP 1 SURVEY CONTROL POINT
- ⊙ FORMER SURVEY INSTRUMENT
- ⊙ SPOT ELEVATION
- CLEAN OUT
- CURB STOP
- WATER VALVE
- FIRE HYDRANT
- FORDER POLE
- LIGHT POLE
- DOWN SPOUT
- SIGN
- TREE (DECIDUOUS)
- TREE (CONIFEROUS)
- BUSH (DECIDUOUS)
- BUSH (CONIFEROUS)
- WIRE FENCE
- WOOD FENCE
- CHAIN LINK FENCE
- CURB & GUTTER
- WATER LINE
- OVERHEAD POWER LINE
- UNDERGROUND POWER LINE
- GAS LINE
- SECONDARY SEWER LINE
- TELEPHONE LINE
- FIBER OPTIC LINE
- CABLE TV LINE
- CONDUIT (1")
- CONDUIT (2")

Landscape Points

Total Points Required 67756

| | |
|--|---------------|
| Points provided within the 20 ft requirement | |
| 11 Large Trees | 25,000 |
| 13 Shrubs | 13,500 |
| 809 5" Turf | 10,250 |
| 0 3" Ground Cover | 33,770 |
| Total | 67,756 |

| | |
|---|---------------|
| Points provided outside the 20 ft requirement | |
| 10 Large Trees | 20,000 |
| 14 Shrubs | 15,000 |
| 7152 5" Turf | 21,000 |
| Total | 56,000 |

| REVISIONS | |
|-----------|-------------|
| NO. | DESCRIPTION |
| | |
| | |
| | |
| | |



Henriksen, Inc.
 526 Saint Joseph Street, Suite A
 Rapid City, South Dakota 57701
 Phone (605) 342 0189 Fax (605) 341 8288



RECEIVED

APR 24 2023

Rapid City Growth
 Management Department

LAYOUT PLAN
 Hagen Glass Company
 Rapid City, South Dakota

Preliminary
 Not For Construction



C1.1
 Drawing Number