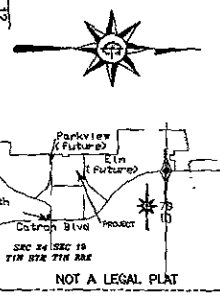


N 1/2 NW 1/4 NW 1/4 (GL 1)
Section 19 T1N R8E
20 Acres +/-

LAZY P-6 LAND COMPANY, INC.
505 E. CATRON BLVD.
RAPID CITY, SD 57701
605.391.2027
prmc@gwlc.net
April 8, 2005



E 98' N 1/2 NW 1/4 NW 1/4
Section 19 T1N R8F