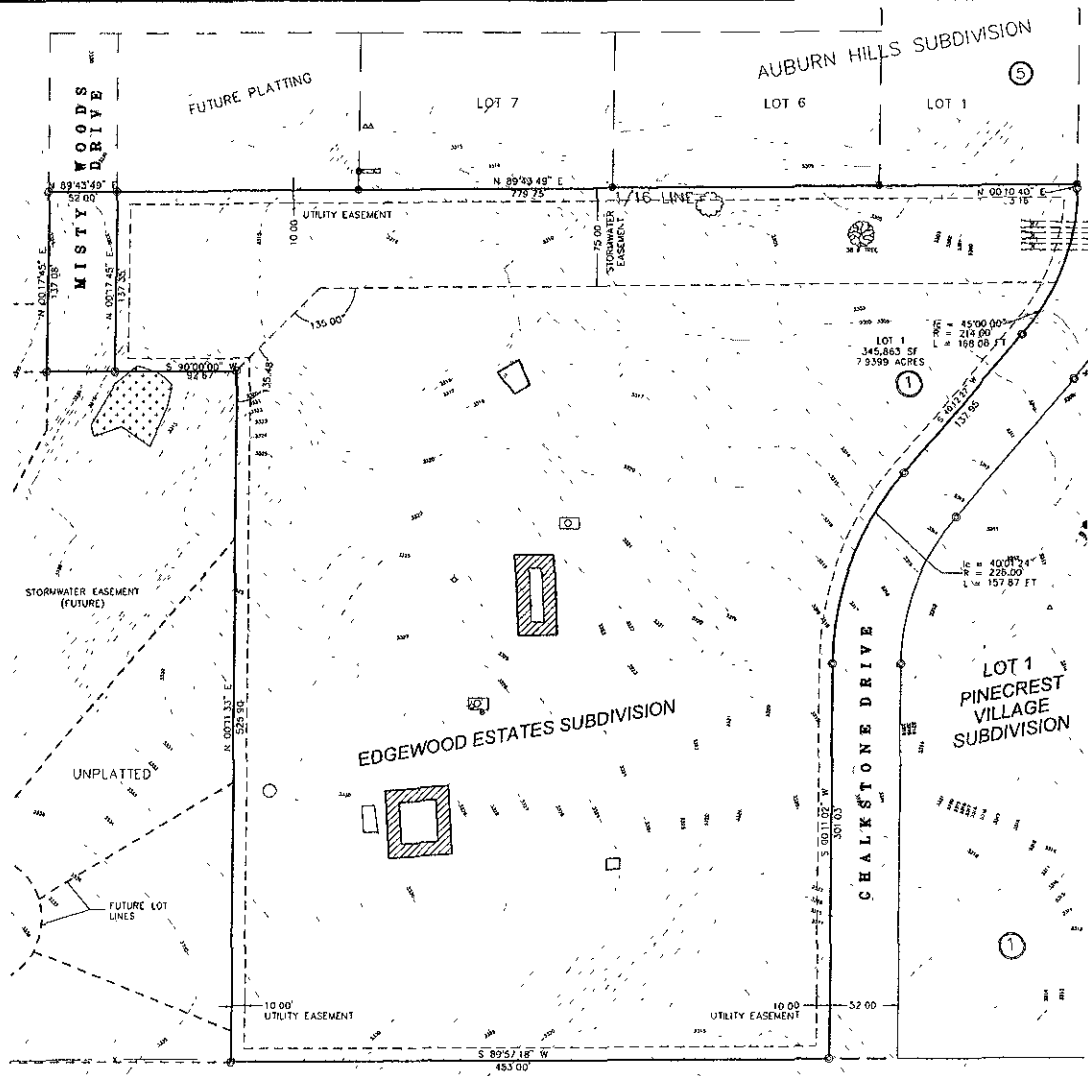
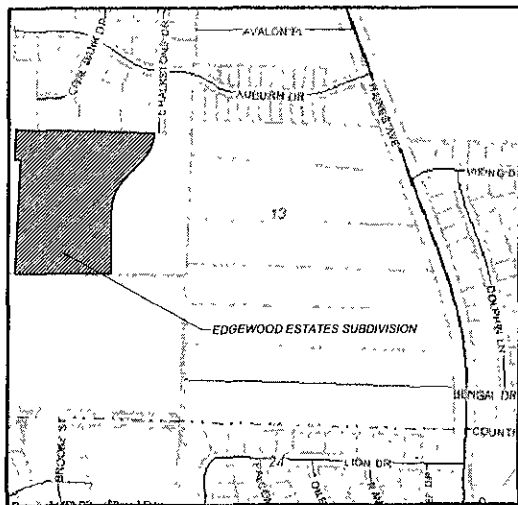


**PRELIMINARY PLAT OF:  
EDGEWOOD ESTATES SUBDIVISION (MULTI FAMILY HOUSING)  
PART OF THE SW1/4 SECTION 13, T2N-R7E  
RAPID CITY, PENNINGTON COUNTY, SOUTH DAKOTA**



UNPLATTED

UNPLATTED



VICINITY MAP

**PLAT INFORMATION**

LOT AREA - 345,863 SQ.FT. OR 7.9399 ACRES  
RIGHT OF WAY AREA - 7,142 SQ.FT. OR 0.1640 ACRES  
TOTAL AREA - 353,005 SQ.FT. OR 8.1039 ACRES

**PLAT LEGEND**

- DENOTES MONUMENT FOUND
- DENOTES LOT CORNERS

**RECEIVED**

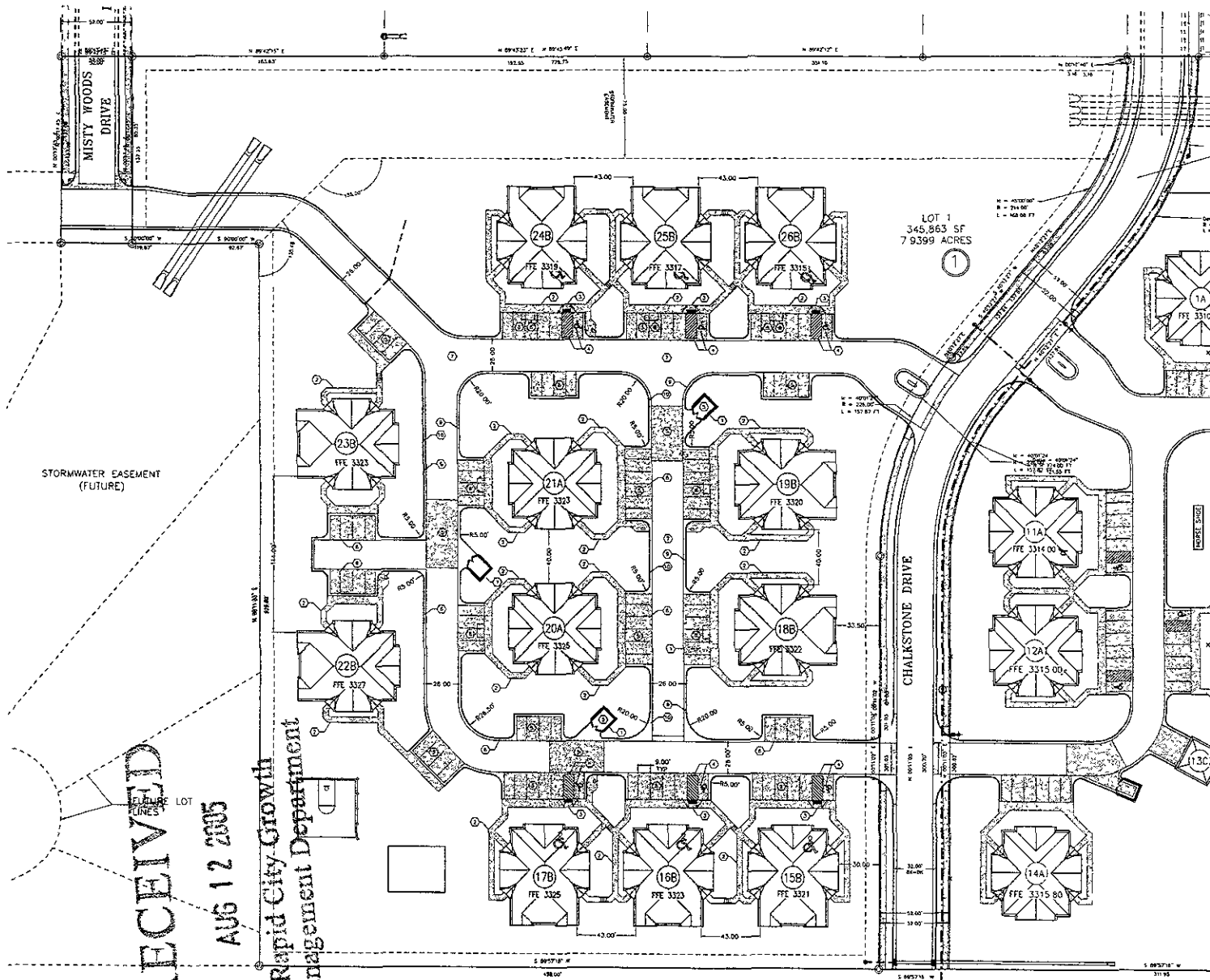
AUG 12 2005

Rapid City Growth  
Management Department

**OWNER:**  
GANDOLF GROUP, L.L.C  
5354 Parkdale Dr, Suite 350  
St. Louis Park, MN 55416-1603

**ENGINEER:**  
KADRMAS, LEE & JACKSON  
3237 East Broadway  
Bismarck, ND 58502

**Kadmas  
Lee &  
Jackson**  
Engineers Surveyors  
Planners



LEGEND		
EXISTING	ITEM	PROPOSED
○	WATER MAIN	○
○	PIPE UTILITY	○
○	SEC. VENT	○
○	CURB STOP	○
○	MANHOLE	○
○	BOX	○
○	GRASS	○
○	ASPHALT	○
○	WATER MAIN	○
○	SPRAWLER MANHOLE	○
○	WELL HEAD	○
○	LANDSCAPE SERVICE MANHOLE	○
○	UTILITY	○
○	STORM DRAIN MANHOLE	○
○	STORM DRAIN MANHOLE	○
○	CURB STOP	○
○	CATCH BASIN	○
○	UNDERGROUND ELECTRIC	○
○	OVERHEAD ELECTRIC	○
○	POWER POLE	○
○	SOFT WIRE	○
○	LIGHT POLE	○
○	ELECTRICAL CONTROL BOX	○
○	ELECTRICAL SERVICE	○
○	ELECTRICAL SERVICE (PLUG-IN)	○
○	UNDERGROUND TELEPHONE	○
○	TELEPHONE MANHOLE	○
○	TELEPHONE pedestal	○
○	UNDERGROUND CABLE TV	○
○	CABLE TV pedestal	○
○	NATURAL GAS LINE	○
○	FLUE LINE	○
○	CONCRETE CURB & OUTLET	○
○	EDGE OF ASPHALT SURFACE	○
○	EDGE OF CONCRETE SURFACE	○
○	SPERMALLOY/CONCRETE SLAB EDGE	○
○	CONCRETE CURB	○
○	WOOD FENCE	○
○	WOOD FENCE	○
○	WOOD FENCE	○
○	FREE CONCRETE/CONCRETE	○
○	ROAD	○
○	DRIVEWAY	○
○	MAIL BOX	○
○	PROPERTY PIN	○
○	CONCRETE FORM	○

LOT 1  
348,863 SF  
7.9399 ACRES

STORMWATER EASEMENT (FUTURE)

Rapid City Growth Management Department

RECEIVED  
AUG 12 2005

**SITE PLAN NOTES**

- THESE NOTES ARE FOR GENERAL INFORMATION IN CONNECTION WITH AND AS A SUPPLEMENT TO THE WRITTEN SPECIFICATIONS, DETAILS, ADDENDUM AND CHANGE ORDERS ASSOCIATED WITH THE CONTRACT DOCUMENTS.
- THE LOCATION OF EXISTING UNDERGROUND UTILITIES ARE SHOWN IN AN APPROXIMATE MANNER ONLY AND HAVE NOT BEEN INDEPENDENTLY VERIFIED BY THE OWNER OR ITS REPRESENTATIVE. THE CONTRACTOR SHALL DETERMINE THE EXACT LOCATION OF ALL EXISTING UTILITIES BEFORE COMMENCING WORK. UNDERGROUND UTILITIES SHALL BE MADE BY USING THE "ONE CALL NUMBER" 1-800-255-2665.
- CONSTRUCTION STAKING WILL BE PROVIDED BY THE ENGINEER.

**SITE PLAN KEYNOTES:**

- INSTALL CHAMFER SCREEN ENCLOSURE SEE ARCHITECTURAL PLANS
- INSTALL 4" CONCRETE SIDEWALK SEE DETAIL
- INSTALL ACCESSIBLE RAMP SEE DETAIL
- INSTALL ACCESSIBLE PARKING STALL, PAINTED STRIPS, SIGNAGE AND BLUE STRAPPING SEE DETAILS
- INSTALL 5" REINFORCED CONCRETE SLAB SEE DETAIL
- INSTALL 1" YELLOW PARKING STRAPPING SEE DETAIL
- INSTALL 4" HRP OVER 6" AGGREGATE BASE SEE DETAIL
- INSTALL THICKENED CONCRETE WALK AT CONCRETE EDGE SEE DETAIL
- INSTALL TYPICAL (P) CONCRETE CURB AND OUTLET SEE DETAIL
- INSTALL SP/CL/UT CONCRETE CURB AND OUTLET SEE DETAIL

**READY ARCHITECTURAL ASSOCIATES, INC.**  
11605 Highway 230, Blvd  
Minnetonka, Minnesota 55305  
(952) 979-9231 fax (952) 332-9514

**Kadmas Lee & Jackson**  
Engineers Surveyors Planners

**GANDOLF GROUP, L.L.C.**  
5354 Parkdale Drv  
Suite 350  
SILVERDALE, MN 55416-1616

**EDGEWOOD ESTATES**  
4500 CHALKSTONE DRIVE  
RAPID CITY, S D

PROJECT NO. 0504  
DATE: 05/04  
CHECKED BY: CME  
FILE NO. 0504  
PLAT DATE: 05/04

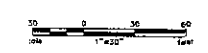
REVISIONS:

REV#	DATE	BY
△		
△		
△		
△		

COPYRIGHT 2004 © BY  
READY ARCHITECTURAL ASSOCIATES INC

SHEET SCALE:  
AS SHOWN  
SHEET TITLE:  
LAYOUT & STAKING PLAN

SHEET NUMBER:  
C30



UNPLATTED