

RECEIVED

SITE PLAN OF PROPOSED TRACT B

05SV053

JUL 28 2005

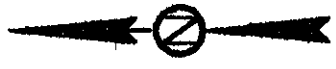
Rapid City Growth Management Department

CURVE DATA

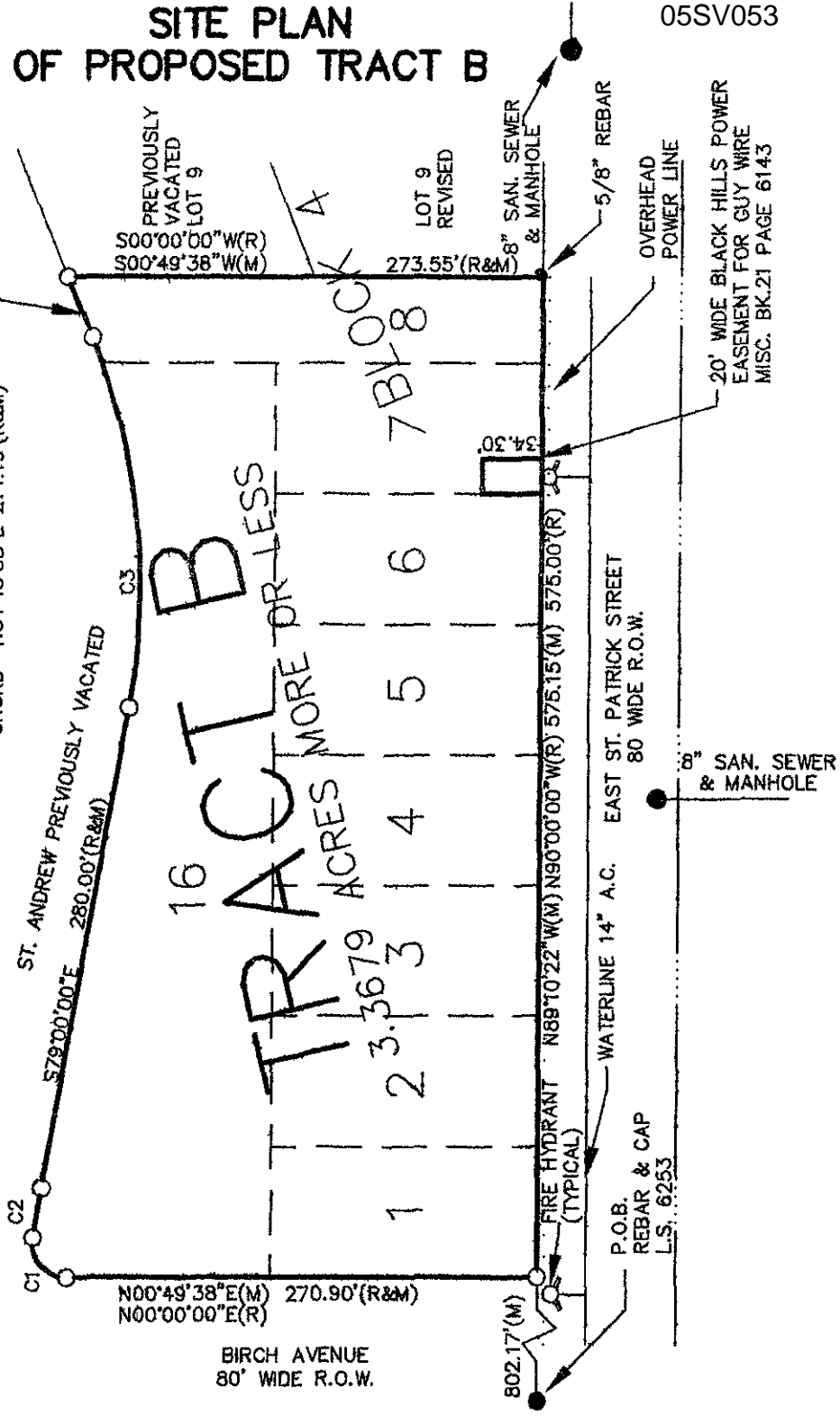
C1 Δ = 98°54'13"  
R = 20.00'(R&M)  
L = 34.52'(M) 34.44'(R)  
CHORD N50°09'13"E 30.34'

C2 Δ = 01°31'12"  
R = 1083.48'(R&M)  
L = 28.74'(R&M)  
CHORD S79°45'36"E 28.74'(R&M)

C3 Δ = 32°31'57"  
R = 382.34'(R&M)  
L = 217.09'(R&M)  
CHORD N84°45'58"E 214.19'(R&M)



LEGEND:  
SCALE 1" = 100'  
● FOUND MONUMENT  
○ SET MONUMENT  
(M) MEASURED DIMENSION  
(R) RECORD DIMENSION



SITE PLAN FOR VACATION OF LOTS 1-8 AND 16 OF BLOCK 4, REPLATTED INTO TRACT B OF BLOCK 4, OF HANSEN HEIGHTS LOCATED IN GOV. LOT 7(SW1/4, SW1/4), AND IN THE W1/2 OF THE SE1/4 OF THE SW1/4, SECTION 6, T1N, R8E, B.H.M., RAPID CITY, PENNINGTON COUNTY, SOUTH DAKOTA

**PINHOLT LAND SURVEYING**  
PO BOX 704  
RAPID CITY, S.D. 57709  
PH. & FAX 605-394-7703

DRAWN BY: GRP  
CLIENT: HANSEN  
DATE: July 17, 2005  
FILE: Hanserp