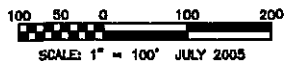
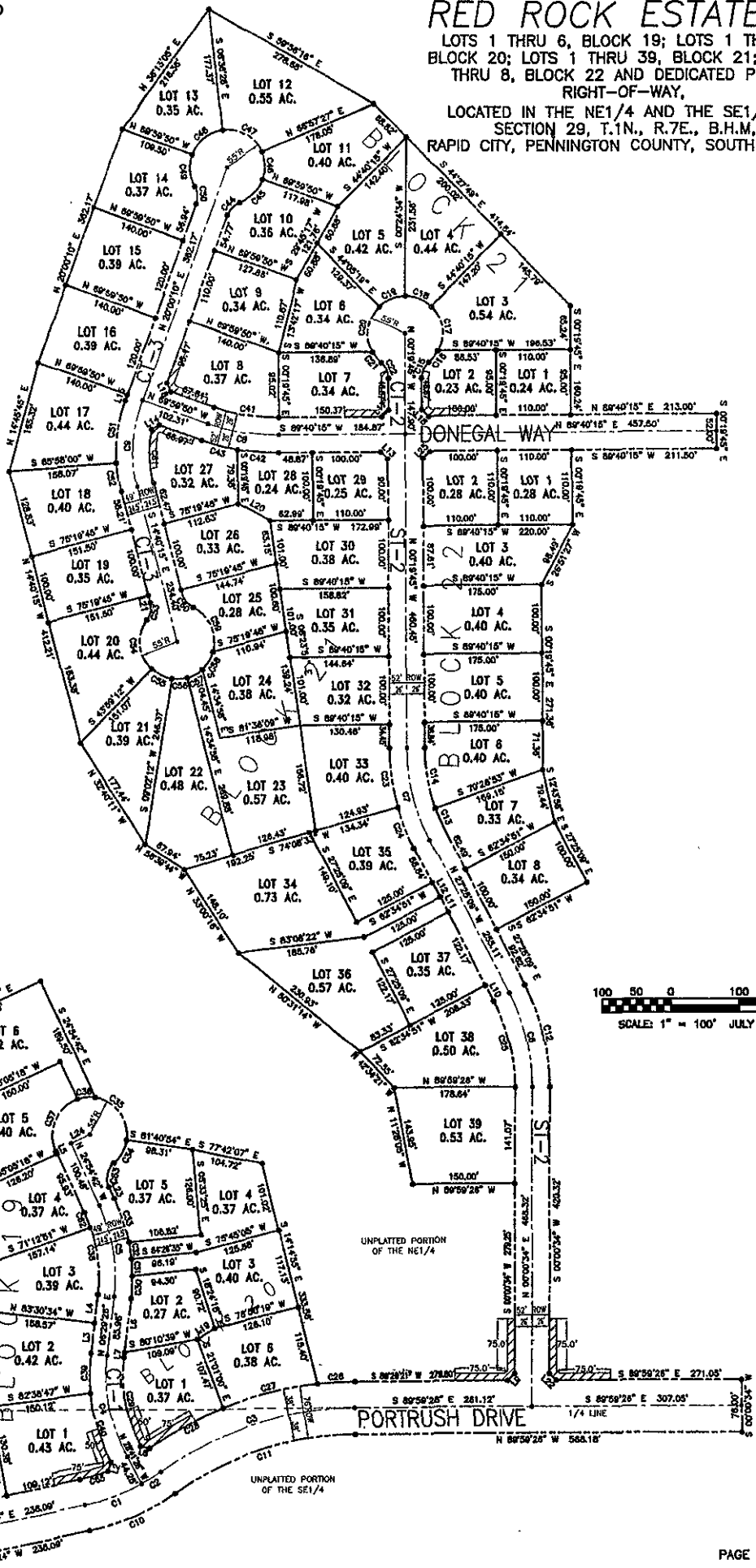


# PLAT OF RED ROCK ESTATES

LOTS 1 THRU 6, BLOCK 19; LOTS 1 THRU 6, BLOCK 20; LOTS 1 THRU 39, BLOCK 21; LOTS 1 THRU 8, BLOCK 22 AND DEDICATED PUBLIC RIGHT-OF-WAY,

LOCATED IN THE NE1/4 AND THE SE1/4 OF SECTION 29, T.1N., R.7E., B.H.M., RAPID CITY, PENNINGTON COUNTY, SOUTH DAKOTA



PREPARED BY:  
**ARLETH & ASSOCIATES**  
25 KIRK ROAD  
DEADWOOD, SD 57732  
605-578-1697

JOB NO.  
04-0058

DATE: JULY 7, 2005  
SCALE: 1" = 100'

DRAWN: KT/TY

APPROVED: JMA  
DWG: RR-PHASES

PREPARED FOR:  
DREAM DESIGN INTERNATIONAL, INC.  
648 KANSAS CITY STREET, SUITE 4  
RAPID CITY, SOUTH DAKOTA 57701  
(605) 348-0558