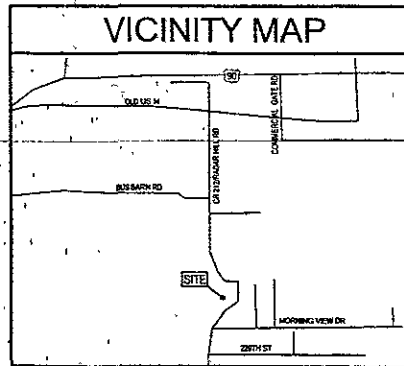
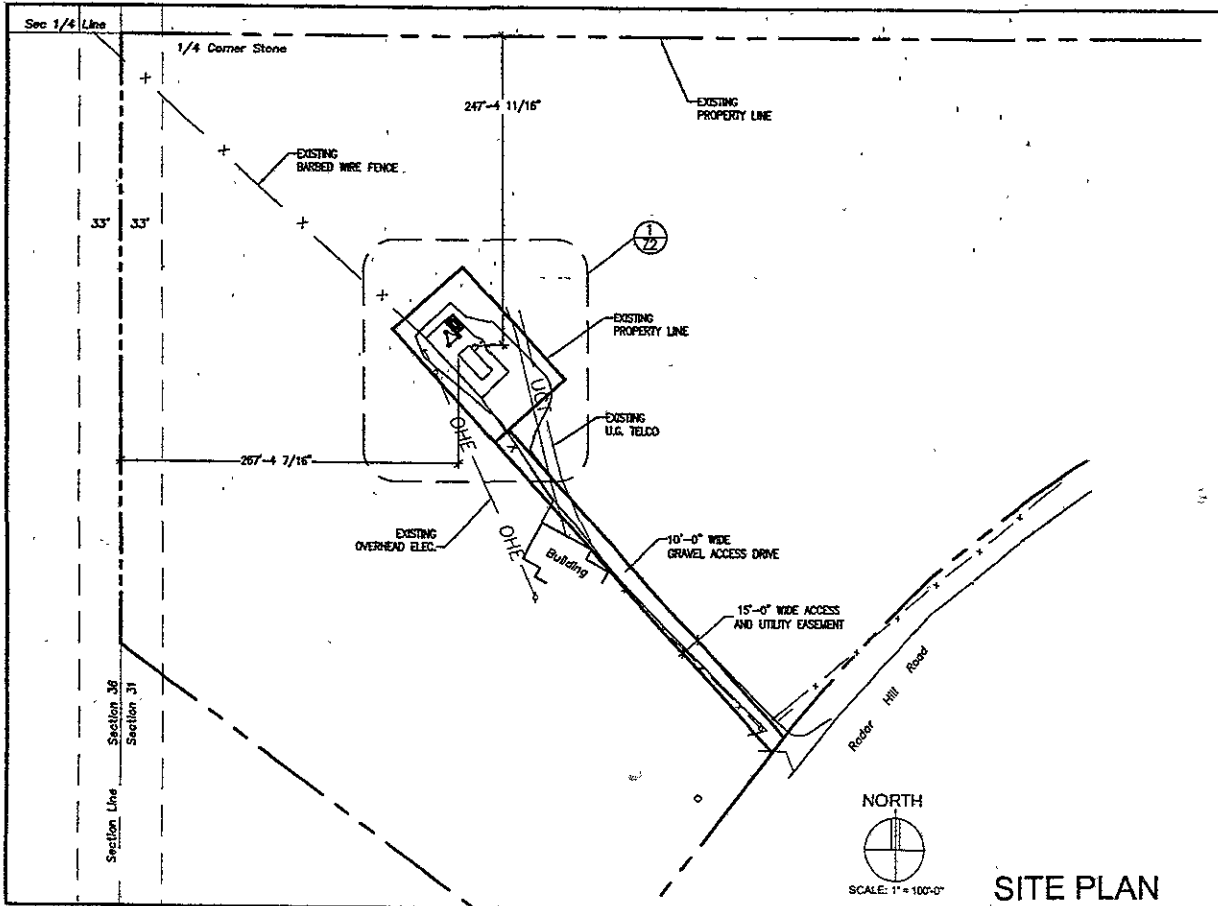


VERIZON WIRELESS

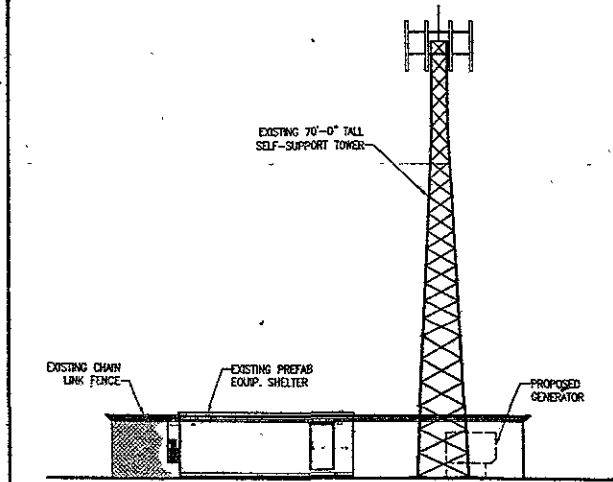


PROJECT INFORMATION

SITE NAME: RCYC BOX ELDER
SITE ADDRESS: 22861 RADAR HILL RD, RAPID CITY, SD 57703
COUNTY: PENNINGTON COUNTY
PROJECT DESCRIPTION: INSTALLATION OF A 30KW DIESEL GENERATOR WITH SOUND ATTENUATION AND SPEL CONTAINMENT TO BE PLACED ADJACENT TO THE EXISTING EQUIP. SHELTER ON A CONCRETE PAD.



NORTHEAST ELEVATION



SCALE: 1" = 20'

LEGAL DESCRIPTION

Utility Lot One (1) of Lot B of the Olson Subdivision, as shown on the plat filed in Plat Book 22, Page 71, Pennington County, South Dakota.

RECEIVED

JUL 01 2005

VERIZON WIRELESS
 9855 828 Avenue North, Suite # 120
 Plymouth, MN 55442

PROJECT: RCYC BOX ELDER GENERATOR ADD
 22861 RADAR HILL RD
 RAPID CITY, SD 57703

SHEET CONTENTS:
 PROJECT INFORMATION
 ENLARGED SITE PLAN
 NORTH ELEVATION

DRAWN BY: TJR
DATE: 6/23/05
CHECKED BY: TRB

05SR041

RECEIVED

JUL 01 2005

Rapid City Growth
Management Department

DESIGN
INTERNATIONAL
ROBERT L. JOHNS, III
ARCHITECT
1000 W. 10TH ST.
RAPID CITY, SD 57702

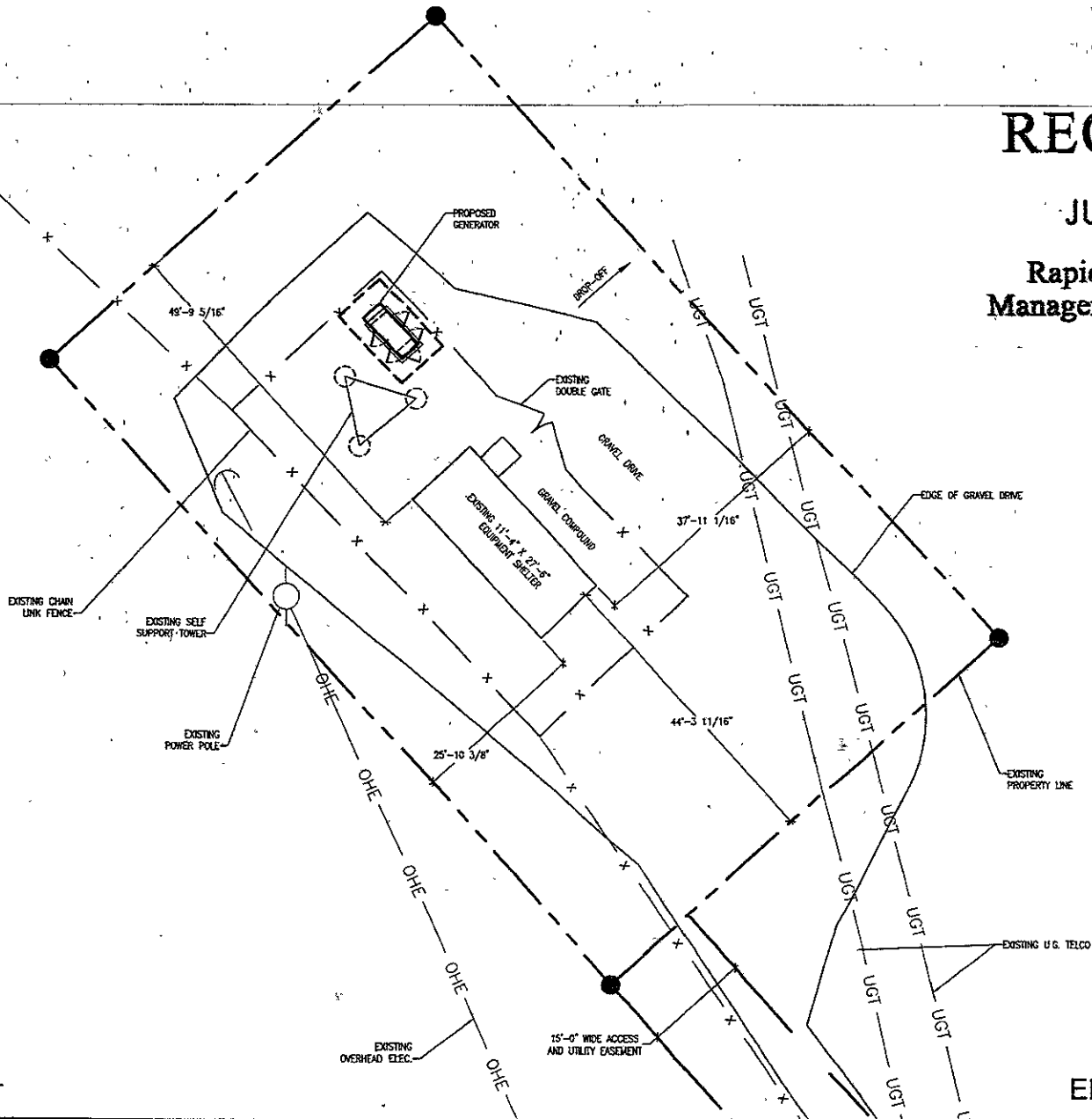
VERIZON
WIRELESS
8856 69th Avenue North, Suite # 120
Plymouth, MN 55442

PROJECT:
RCYC BOX ELDER
GENERATOR ADD.
22861 RADAR HILL RD
RAPID CITY, SD 57703

SHEET CONTENTS:
PROJECT INFORMATION
VICINITY MAP
ENLARGED SITE PLAN
NORTH ELEVATION

DRAWN BY: T.J.R.
DATE: 5/23/05
CHECKED BY: TRB

Z-2



ENLARGED SITE PLAN

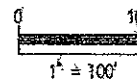
Sec 1/4 Line

1/4 Corner Stone

RECEIVED

JUL 01 2005

Rapid City Growth Management Department



LEGEND

- = Utility Pole
- x— = Berbed Fence Line
- ◇— = Chain Link Fence Line
- +— = Overhead Utility Line
- |— = Underground Telephone
- = Found Survey Monument LS 1771 unless noted
- △ = Control Point

Bench Mark: RCPC 17, corner of Morningview Dr. & Radar Hill, 3334.77, NGVD 29



SURVEYOR'S NOTES

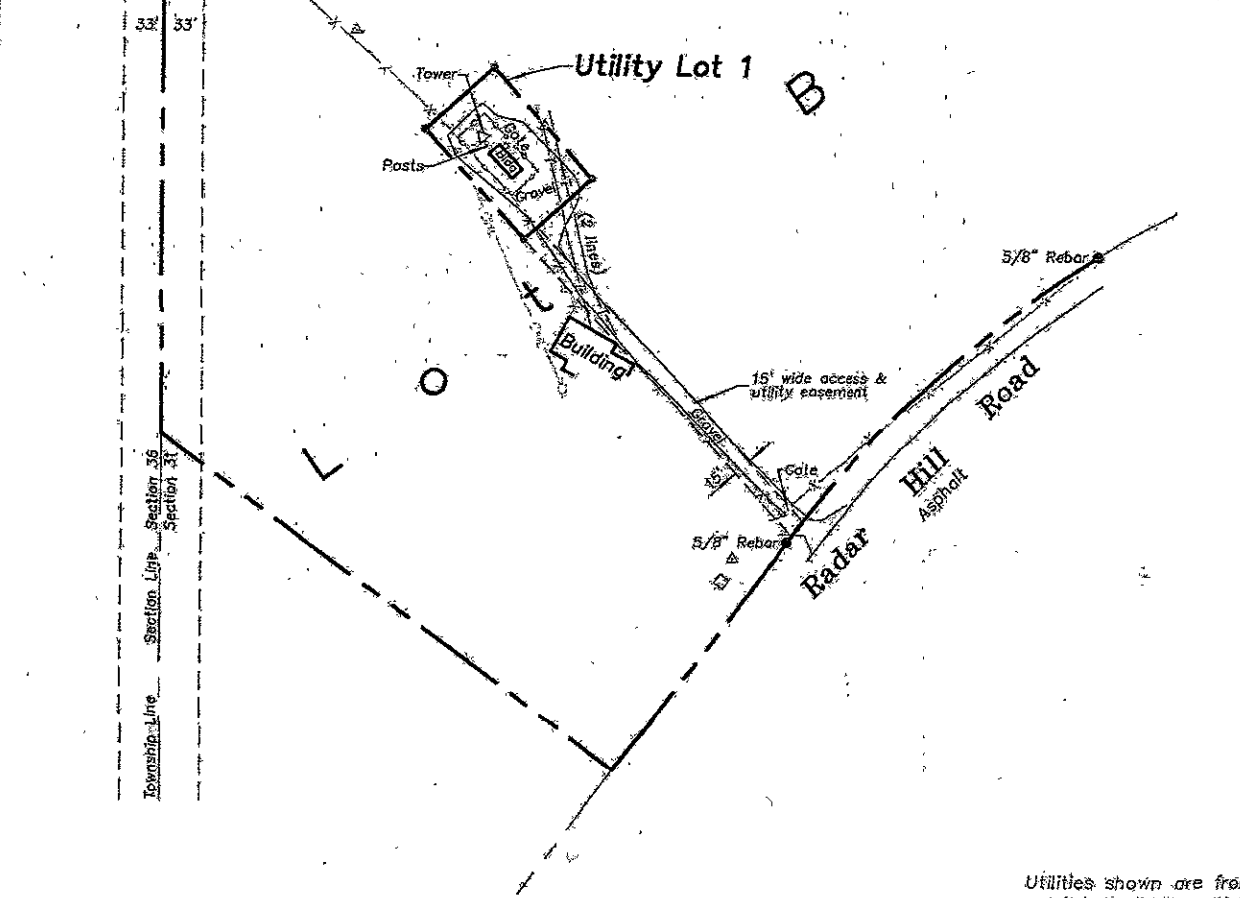
Utilities shown are from visual inspection, sketches provided by individual service providers and Utility Locates performed by South Dakota One Call, Ticket Number 051220297

Site Plan - RCYC Box Elder
Utility Lot 1 of Lot B of the Olson
Subdivision, Pennington County, South Dakota,
as shown on the plat filed in Plat
Book 22, Page 71.

1022 1/2th Street
Rapid City, SD 57701
605-372-1111
605-372-1112 fax

Fisk Land Surveying
& Consulting
Engineers, Inc.

Date	5/16/05
Surveyed by	MLBLDR
Drawn by	LAR
Checked by	RWF
Revisions	6/21/05
Project No.	05-05-12



Township Line Section 36
Section 35
Section 34

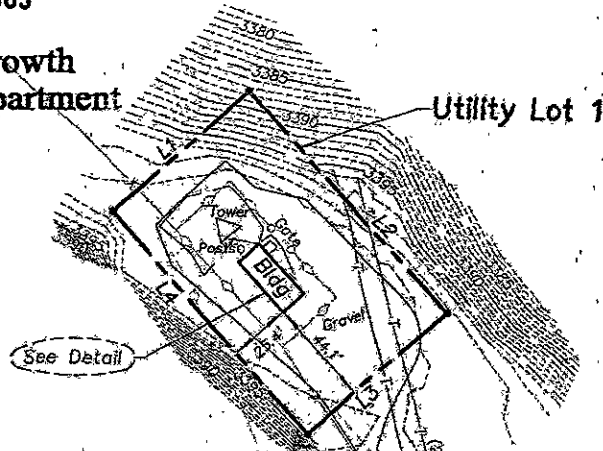
RECEIVED

SURVEYOR'S NOTES

Utilities shown are from visual inspection, sketches provided by individual service providers and Utility Locates performed by South Dakota One Call, Ticket Number 051220297

JUL 01 2005

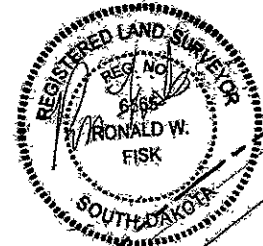
Rapid City Growth Management Department



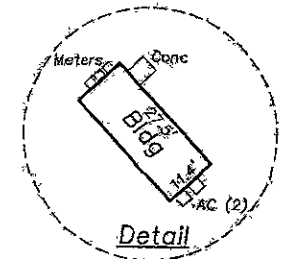
LEGEND

- = Utility Pole
- x— = Barbed Fence Line
- o—o— = Chain Link Fence Line
- o— = Overhead Utility Line
- |—|— = Underground Telephone
- * = Found Survey Monument LS 1771 unless noted
- △ = Control Point

Bench Mark: RCP 17, corner of Morningview Dr. & Roder Hill, 3384.77, NGVD 29



MEASURED			RECORDED		
NUM	BEARING	DISTANCE	NUM	BEARING	DISTANCE
L1	N48°03'14"E	75.01'	L1	N47°57'40"E	75.00'
L2	S42°00'57"E	121.39'	L2	N42°02'20"W	121.25'
L3	S48°00'10"W	75.20'	L3	N47°57'40"E	75.00'
L4	N41°55'04"W	121.46'	L4	N42°02'20"W	121.25'



Site Plan - RCYC Box Elder Utility Lot 1 of Lot B of the Olson Subdivision, Pennington County, South Dakota, as shown on the plat filed in Plat Book 22, Page 71.

1022 Main Street
P.O. Box 815
Rapid City, South Dakota
57702
(605) 349-1334
(605) 341-2112 fax

Fisk Land Surveying & Consulting Engineers, Inc.

Date: 5/16/05
 Surveyed by: MLB, DR
 Drawn by: LAR
 Checked by: RWF
 Revisions: 6/21/05
 Project No.: 05-05-12