

05SE009

SITE PLAN

BROOKFIELD SUBDIVISION

LOCATED IN THE SE¹/₄ OF THE SE¹/₄,
SECTION 13, T2N, R7E, BHM,
PENNINGTON COUNTY, SOUTH DAKOTA

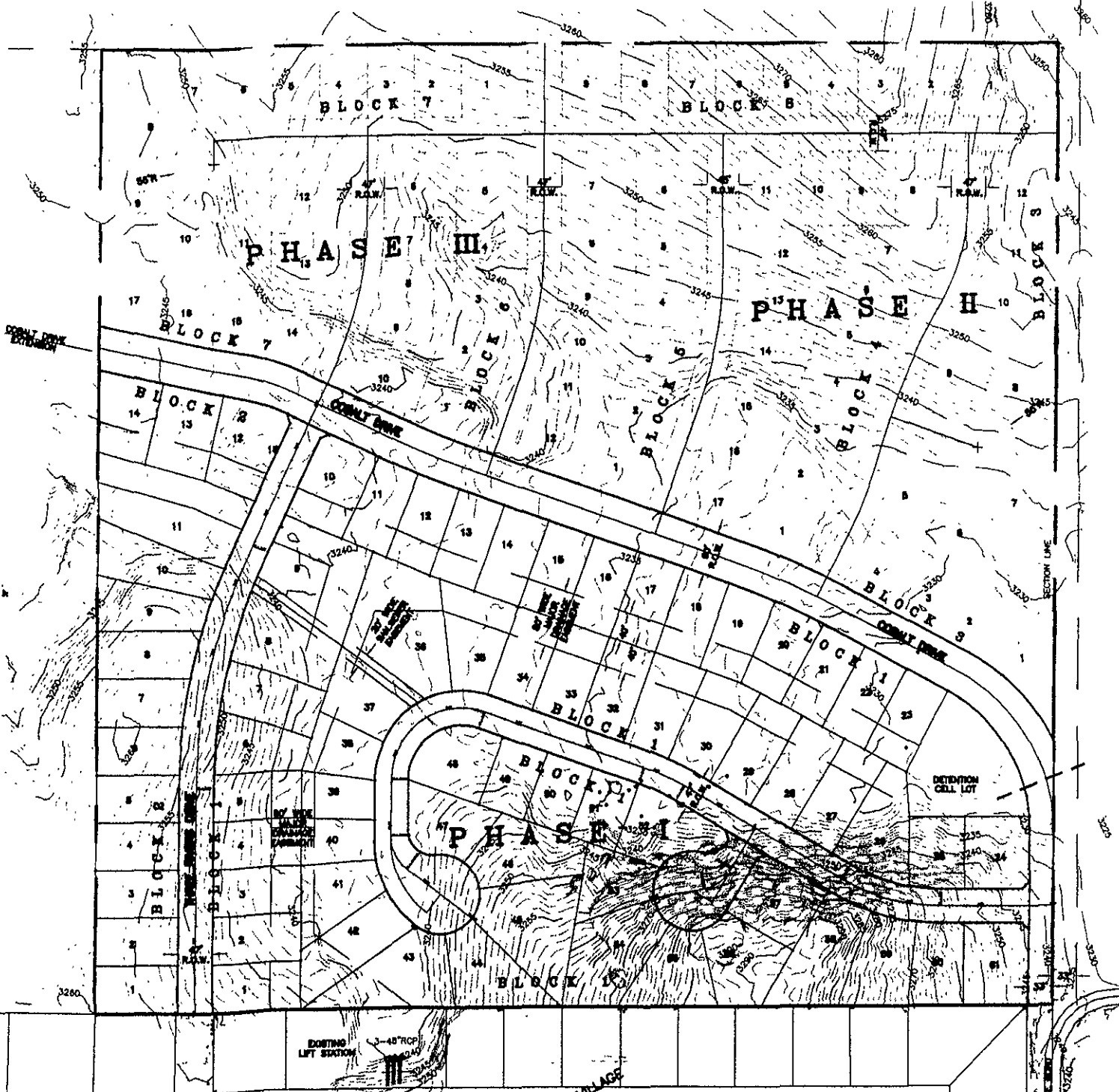
RECEIVED

JUL 27 2005

Rapid City Growth
Management Department

SCALE: 1" = 200'
FEBRUARY 22, 2005

SW¹/₄ NE¹/₄



RECEIVED

FEB 24 2005

Rapid City Growth