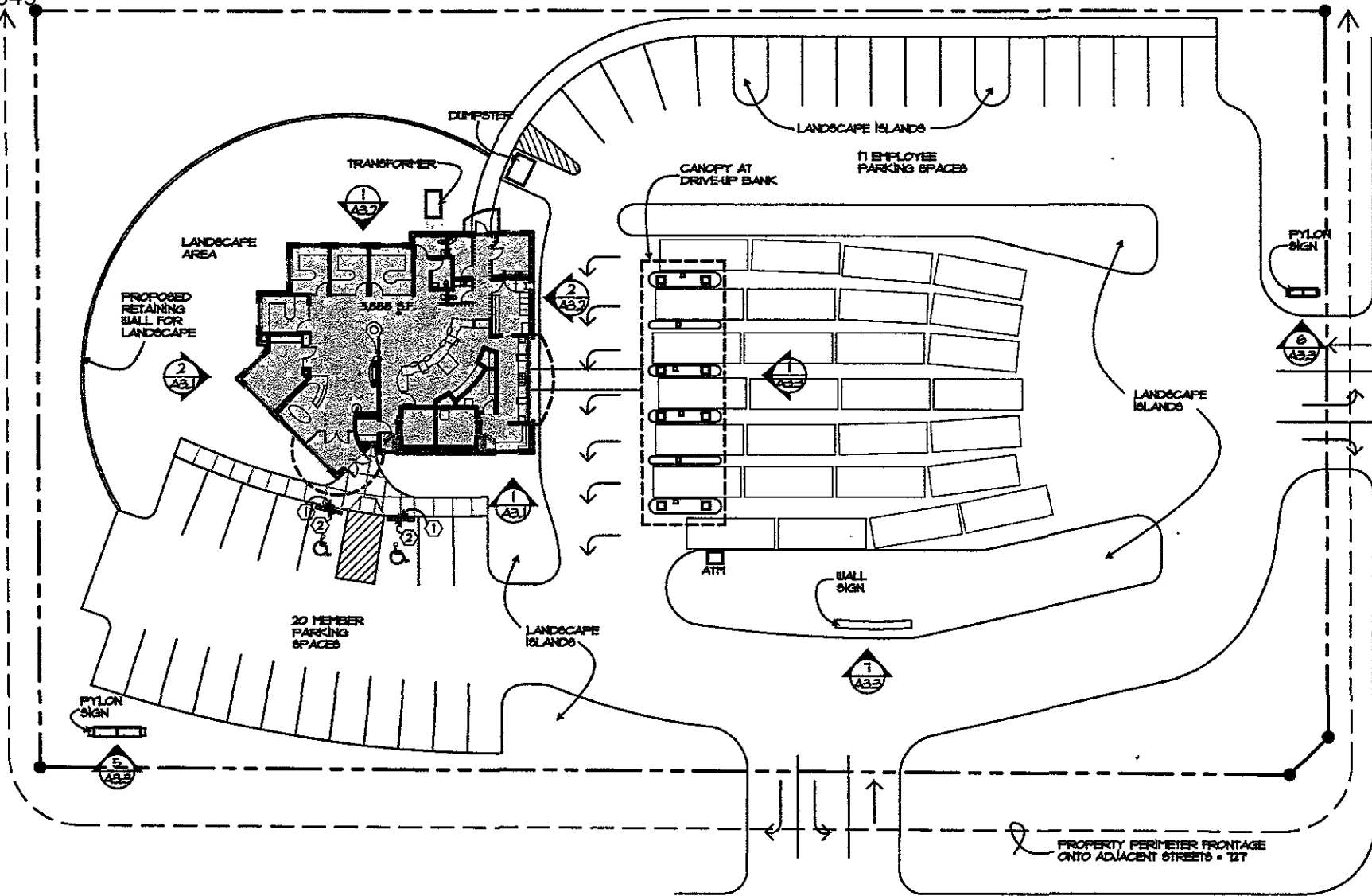


ELK VALE ROAD



- KEY NOTES**
- ① 9'x14" ACCESSIBLE PARKING SIGN
  - ② WHEEL STOP

**SIGNAGE ALLIANCE**  
 TZT = 2 S.F. = BUILDING SIGNAGE = 1,454 S.F.  
 SITE SIGNAGE = 1,434 S.F.  
 SEE SIGNAGE DRAWINGS ON A31, A32, & A33

HOMESTEAD STREET

USE	SF.	PARKING REQUIRED
OFFICE	3,888 S.F.	20
<b>PARKING PROVIDED</b>		<b>31</b>

2 VAN ACCESSIBLE SPACES  
 1 DRIVE-UP LANES WITH 21 STACKING SPACES

1  
A1.1

# SITE PLAN

1"=40'-0"



TIMMONS BOULEVARD

Black Hills Federal Credit Union  
 Rapid City, South Dakota

A1.1

PRELIMINARY  
 NOT FOR  
 CONSTRUCTION

**ARC** architectural  
 1826 Clark Street, Suite 101  
 Rapid City, South Dakota 57702  
 tel 605-341-2068 • fax 605-341-5653  
 www.arc-arch.com  
 ARCArchitectural@ARC-ARCH.COM

DATE: 7/8/05  
 DRAWN BY: RT  
 CHECKED BY: 2005-011

PROJECT NAME: Site Plan