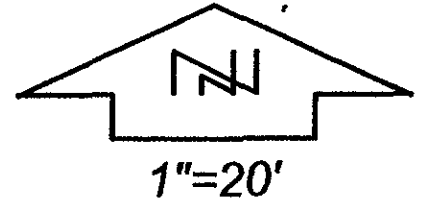


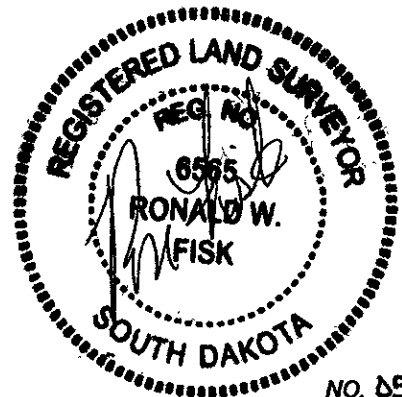
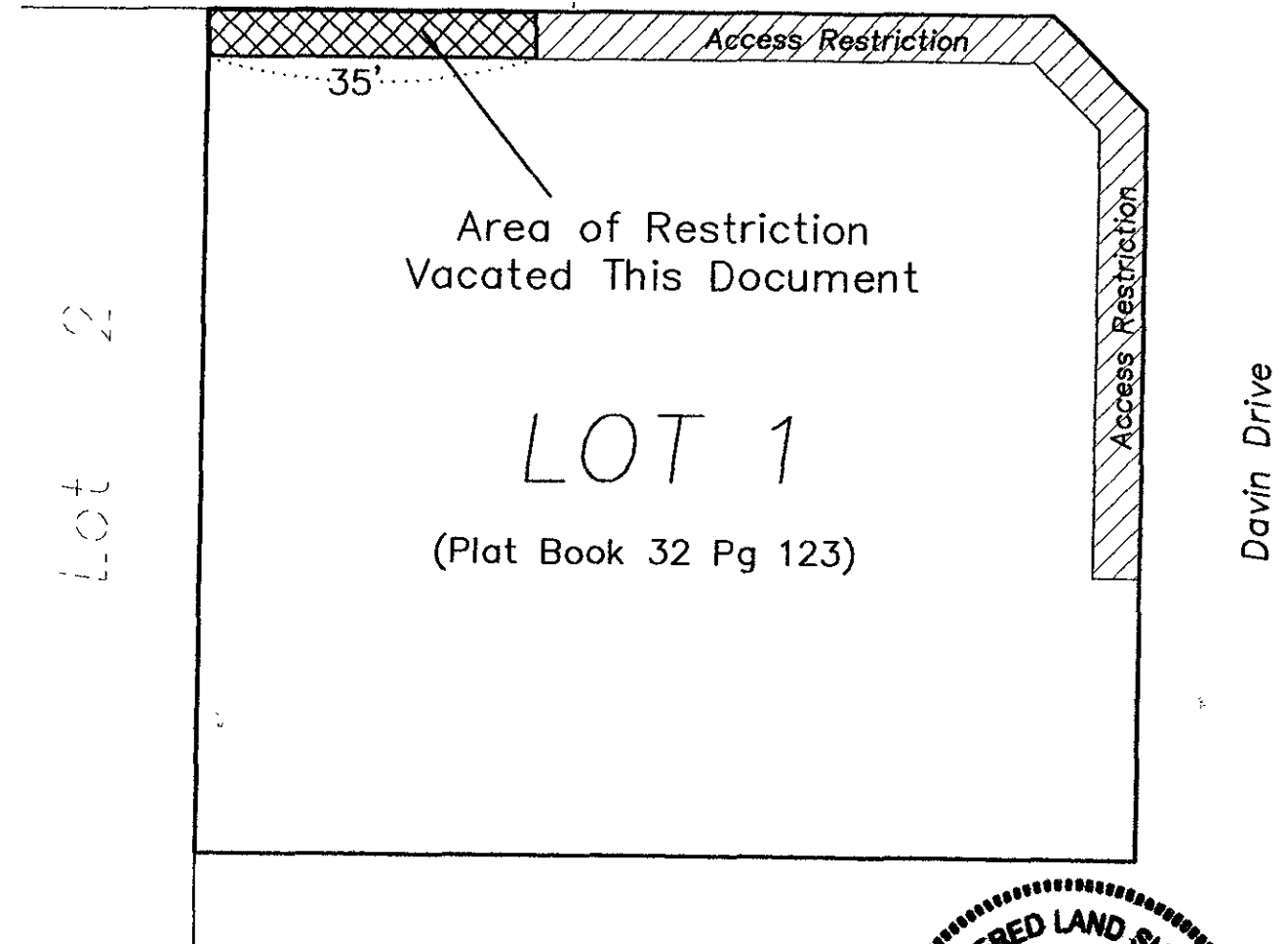
EXHIBIT A

05VE015

VACATION OF ACCESS RESTRICTION
LOT 1, BLOCK 2, KENSINGTON HEIGHTS SUBDIVISION
RAPID CITY, PENNINGTON COUNTY, SOUTH DAKOTA



Field View Drive



PREPARED BY:
FISK LAND SURVEYING & CONSULTING ENGINEERS, INC.
P.O. BOX 8154, RAPID CITY, SD 57709 (605) 348-1538 June 28, 2005

NO. 05-143