

EXHIBIT "A"
PERMANENT SEWER EASEMENT
LOCATED IN
NE 1/4, NW 1/4, SECTION 19, T2N, R8E, BHM.
PENNINGTON COUNTY, SOUTH DAKOTA

DRAFT

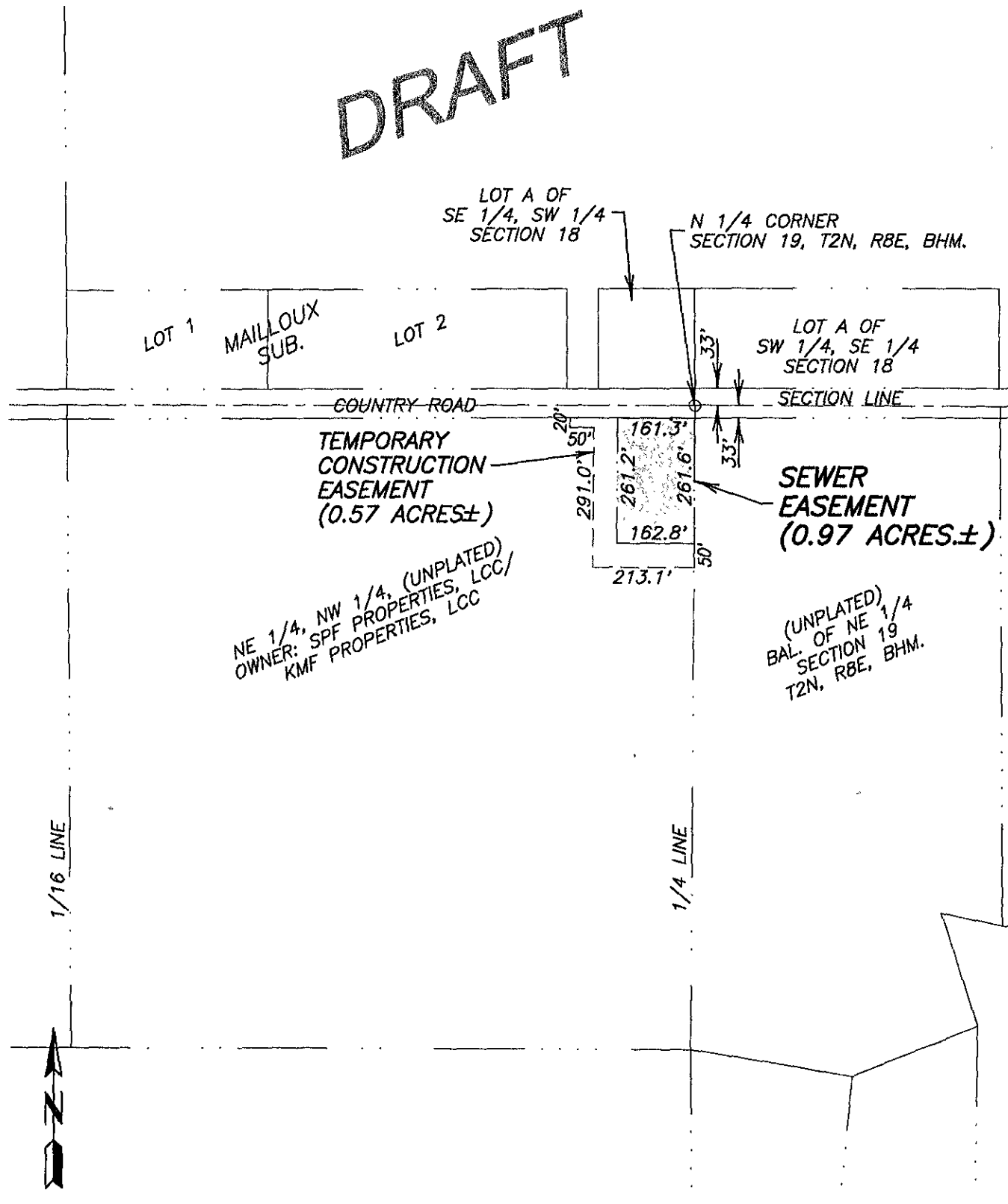


FIGURE 1
LIFT STATION EASEMENT



May 26, 2005 10:53:39 AM
Drawing: EXHIBIT A.DWG (PDS) (C:\VETEC\04128-01 PDS.V)