

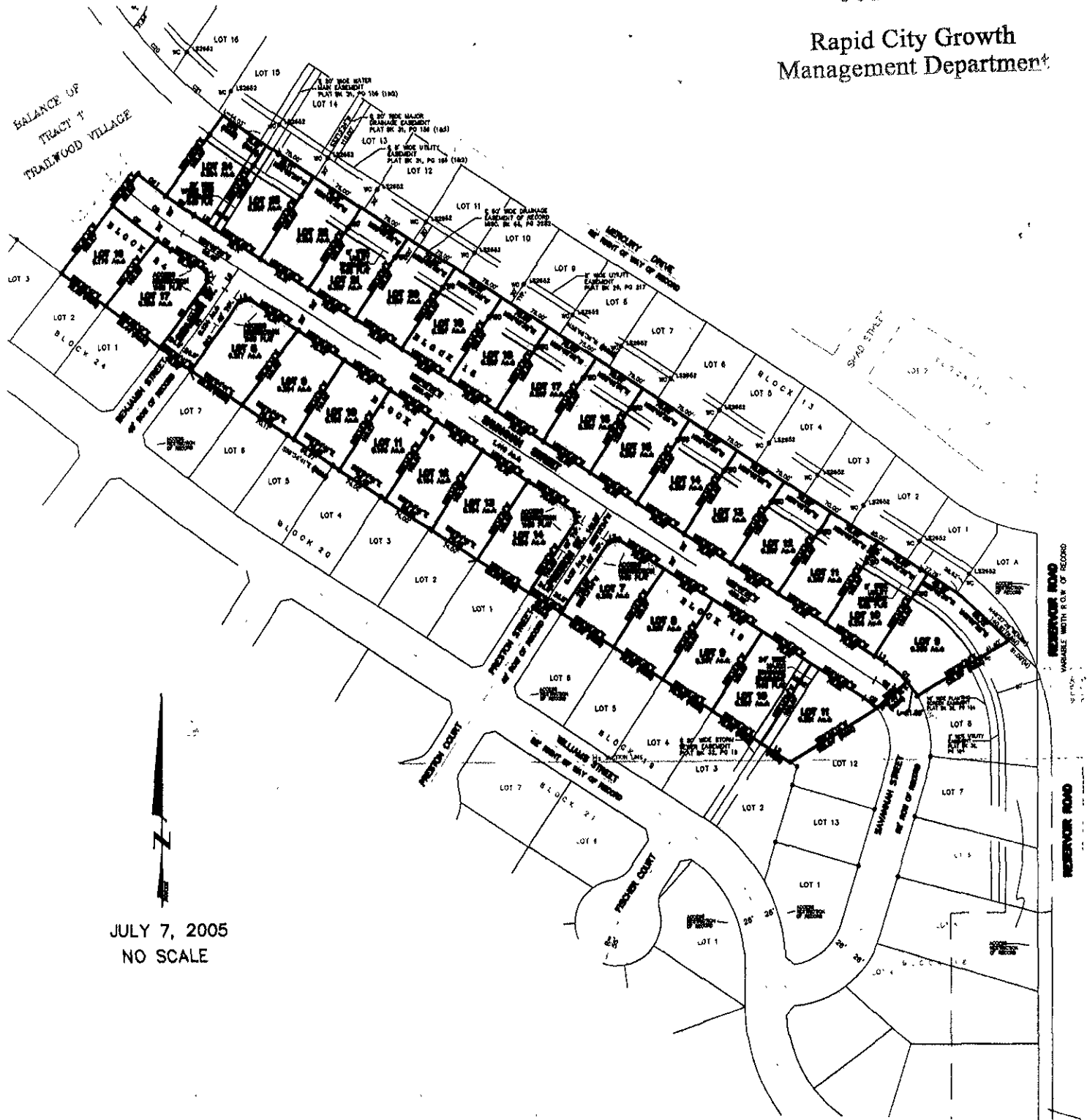
PLAT OF LOTS 9 THRU 24 OF BLOCK 18, LOTS 7 THRU 11 OF BLOCK 19, LOTS 8 THRU 14 OF BLOCK 20, AND LOTS 16 THRU 17 OF BLOCK 24, TRAILWOOD VILLAGE

(FORMERLY A PORTION OF TRACT T OF TRAILWOOD VILLAGE)
LOCATED IN THE N $\frac{1}{2}$ OF THE SE $\frac{1}{4}$,
SECTION 10, T1N, R8E, B.H.M.,
PENNINGTON COUNTY, SOUTH DAKOTA

RECEIVED

JUL 08 2005

Rapid City Growth
Management Department



JULY 7, 2005
NO SCALE

C:\DRAWINGS\1079.12\PLATSH1.DWG, 8x11, 7/7/2005 11:36:41 AM