

PLAT OF KOSTELECKY SUBDIVISION

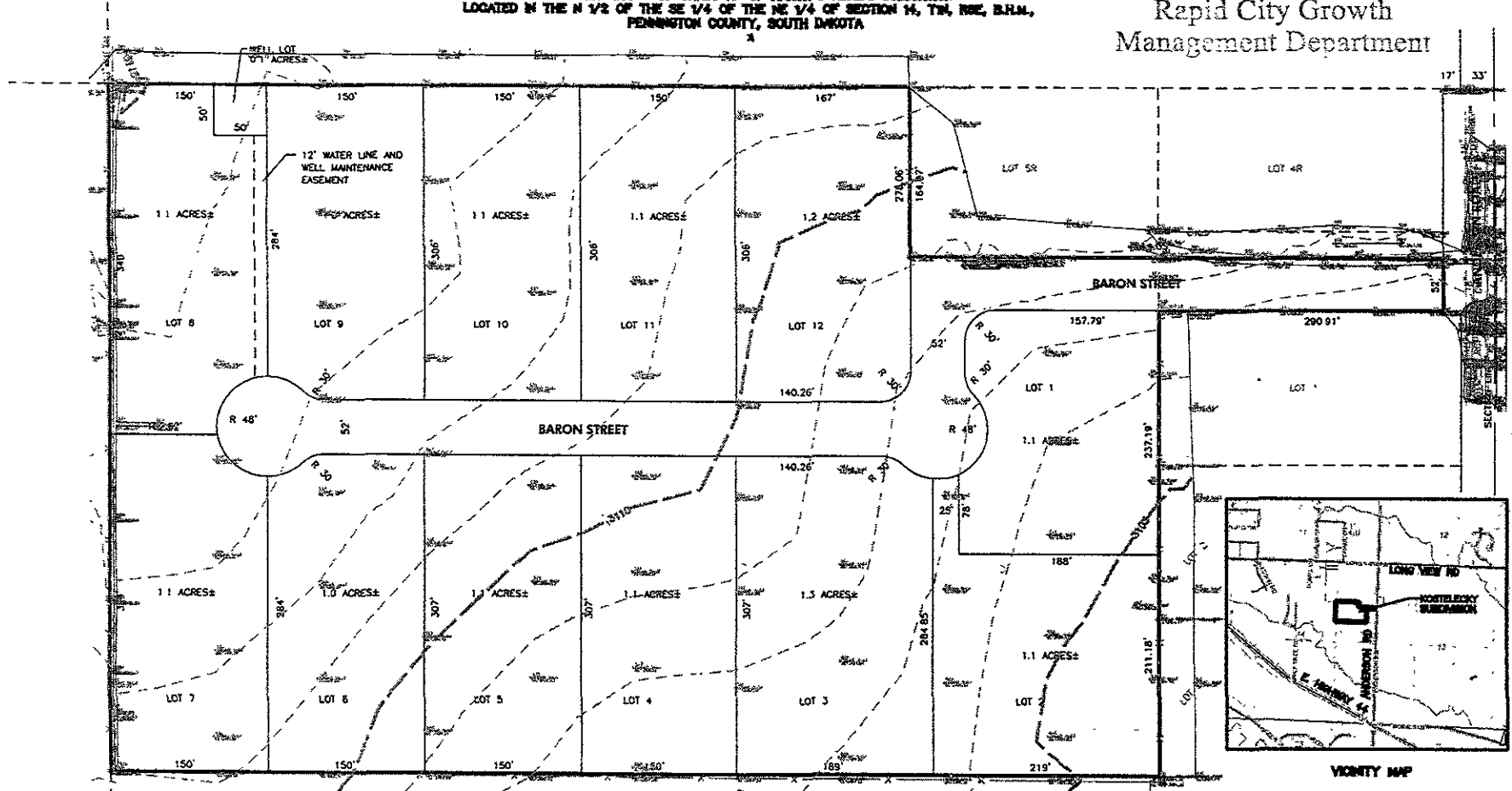
JUL 08 2005

LOTS 1 THRU 12, WELL LOT AND THE DEDICATED BARON STREET RIGHT-OF-WAY;
FORMERLY LOT 8 OF TRACT A OF KNIGHT'S ACRE'S SUBDIVISION
LOCATED IN THE N 1/2 OF THE SE 1/4 OF THE NE 1/4 OF SECTION 14, T14, R02E, B14M,
PENNINGTON COUNTY, SOUTH DAKOTA

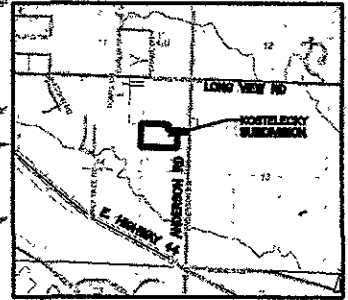
Rapid City Growth
Management Department



LAYOUT PLAT

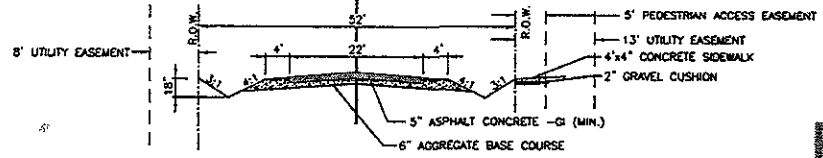


DATE:	AS NOTED
PROJECT NO.:	130
DRAWN BY:	W. J. BROWN
CHECKED BY:	W. J. BROWN
DATE PLOTTED:	07/08/05
SCALE:	AS SHOWN
FILE NO.:	130
DATE:	07/08/05
BY:	W. J. BROWN
CHECKED BY:	W. J. BROWN
DATE:	07/08/05



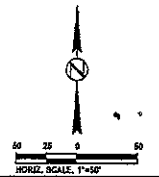
VICINITY MAP

NOTE:
A 8' UTILITY EASEMENT ON ALL
REAR AND SIDE LOT LINES



TYPICAL SECTION - SUBCOLLECTOR (NO PARKING)
N T S

PRELIMINARY
NOT FOR CONSTRUCTION



KOSTELECKY
SUBDIVISION