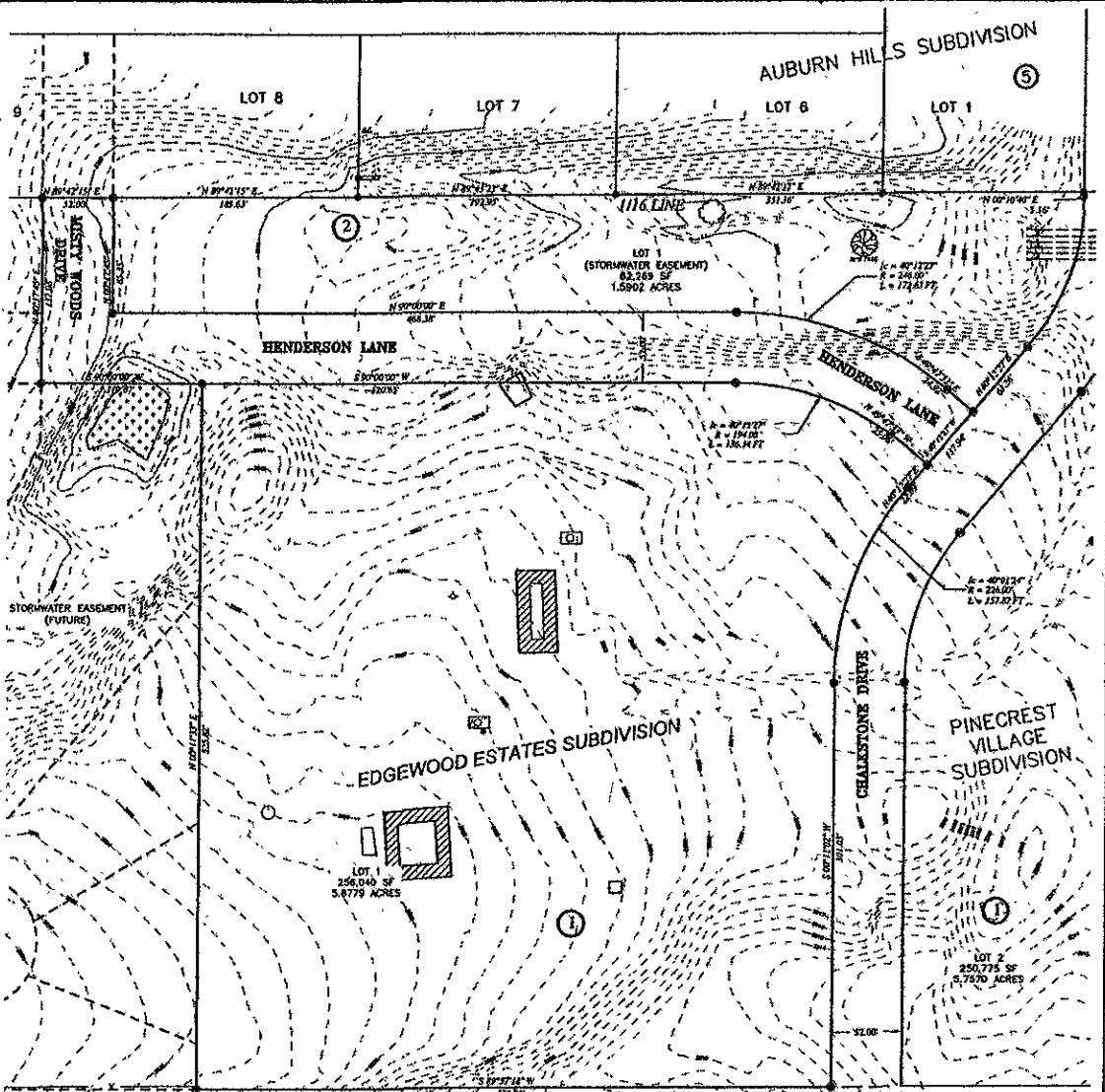


EDGEWOOD ESTATES SUBDIVISION (MULTI FAMILY HOUSING)

(FORMERLY A PORTION OF LOT 8R, MADISON'S SUBDIVISION)

LOCATED IN THE SW1/4 SECTION 13, T2N-R7E
RAPID CITY, PENNINGTON COUNTY, SOUTH DAKOTA



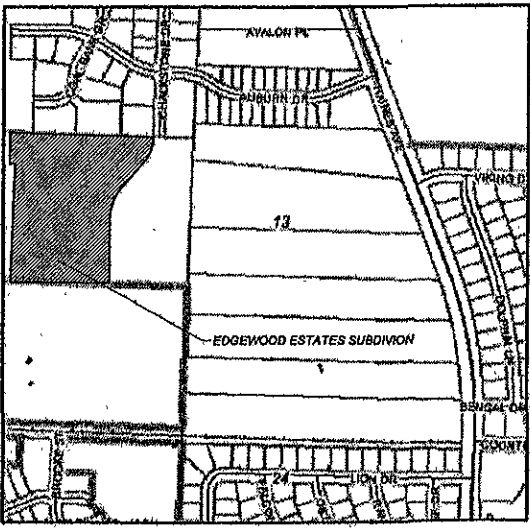
UNPLATTED

UNPLATTED

RECEIVED

JUL 08 2005

Rapid City Growth Management Department



VICINITY MAP

PLAT INFORMATION

TOTAL AREA - 366,154 SQ.FT. OR 8.4057 ACRES.

PLAT LEGEND

- DENOTES MONUMENT FOUND
- DENOTES LOT CORNERS

SCALE: 1" = 60'

JUNE 2005

OWNER:
GANDOLF GROUP, L.L.C.
5354 Parkdale Dr., Suite 356
St. Louis Park, MN 55416-1603

ENGINEER:
KADRMAS, LEE & JACKSON
3237 East Broadway
Bismarck, ND 58502

Kadmas
Lee &
Jackson
Engineers Surveyors
Planners