

RECEIVED
HARTWOODS

JUL 07 2005

Rapid City Growth
Department

05PD053

2

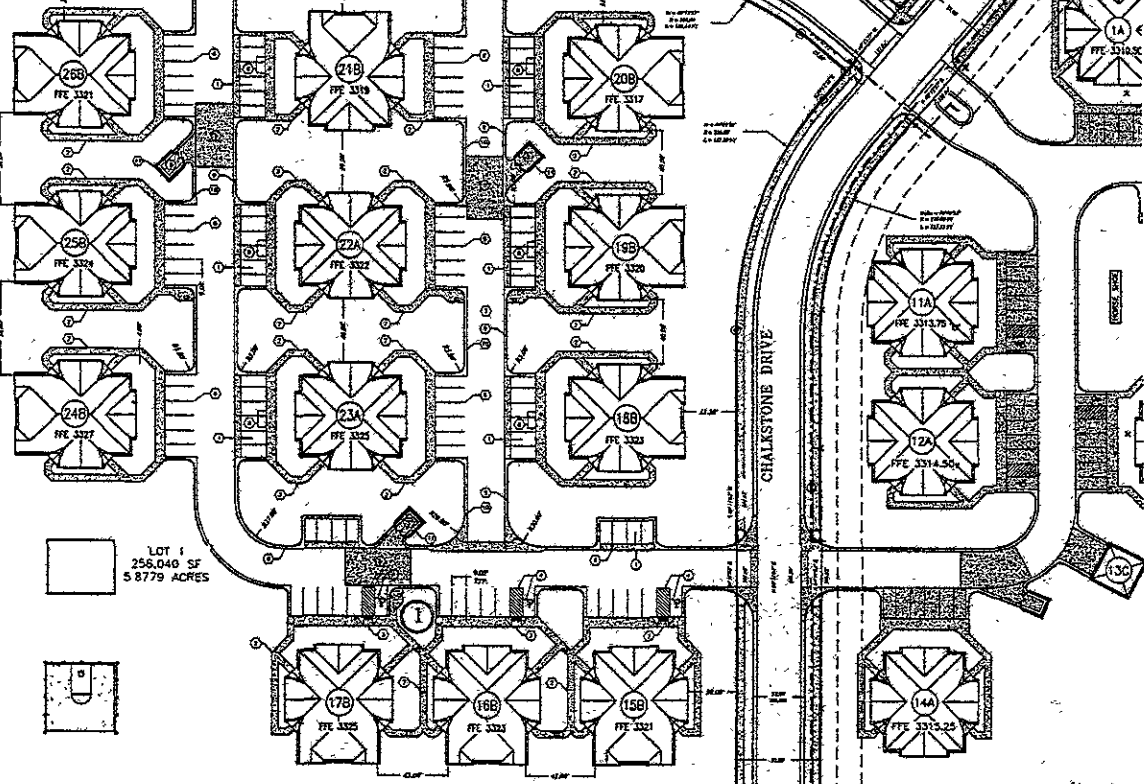
LOT 1
(STORMWATER EASEMENT)
62,269 SF
1.5902 ACRES

HENDERSON LANE

HENDERSON LANE

CHALKSTONE DRIVE

STORMWATER EASEMENT
(FUTURE)



LOT 1
258,040 SF
5.8779 ACRES

UNPLATTED

POSTING	ITEM	PROPOSED
1	STREET MARK	
2	STREET LIGHT	
3	STREET SIGN	
4	STREET STOP	
5	STREET STOP SIGN	
6	STREET STOP SIGN	
7	STREET STOP SIGN	
8	STREET STOP SIGN	
9	STREET STOP SIGN	
10	STREET STOP SIGN	
11	STREET STOP SIGN	
12	STREET STOP SIGN	
13	STREET STOP SIGN	
14	STREET STOP SIGN	
15	STREET STOP SIGN	
16	STREET STOP SIGN	
17	STREET STOP SIGN	
18	STREET STOP SIGN	
19	STREET STOP SIGN	
20	STREET STOP SIGN	
21	STREET STOP SIGN	
22	STREET STOP SIGN	
23	STREET STOP SIGN	
24	STREET STOP SIGN	
25	STREET STOP SIGN	
26	STREET STOP SIGN	
27	STREET STOP SIGN	
28	STREET STOP SIGN	
29	STREET STOP SIGN	
30	STREET STOP SIGN	
31	STREET STOP SIGN	
32	STREET STOP SIGN	
33	STREET STOP SIGN	
34	STREET STOP SIGN	
35	STREET STOP SIGN	
36	STREET STOP SIGN	
37	STREET STOP SIGN	
38	STREET STOP SIGN	
39	STREET STOP SIGN	
40	STREET STOP SIGN	
41	STREET STOP SIGN	
42	STREET STOP SIGN	
43	STREET STOP SIGN	
44	STREET STOP SIGN	
45	STREET STOP SIGN	
46	STREET STOP SIGN	
47	STREET STOP SIGN	
48	STREET STOP SIGN	
49	STREET STOP SIGN	
50	STREET STOP SIGN	
51	STREET STOP SIGN	
52	STREET STOP SIGN	
53	STREET STOP SIGN	
54	STREET STOP SIGN	
55	STREET STOP SIGN	
56	STREET STOP SIGN	
57	STREET STOP SIGN	
58	STREET STOP SIGN	
59	STREET STOP SIGN	
60	STREET STOP SIGN	
61	STREET STOP SIGN	
62	STREET STOP SIGN	
63	STREET STOP SIGN	
64	STREET STOP SIGN	
65	STREET STOP SIGN	
66	STREET STOP SIGN	
67	STREET STOP SIGN	
68	STREET STOP SIGN	
69	STREET STOP SIGN	
70	STREET STOP SIGN	
71	STREET STOP SIGN	
72	STREET STOP SIGN	
73	STREET STOP SIGN	
74	STREET STOP SIGN	
75	STREET STOP SIGN	
76	STREET STOP SIGN	
77	STREET STOP SIGN	
78	STREET STOP SIGN	
79	STREET STOP SIGN	
80	STREET STOP SIGN	
81	STREET STOP SIGN	
82	STREET STOP SIGN	
83	STREET STOP SIGN	
84	STREET STOP SIGN	
85	STREET STOP SIGN	
86	STREET STOP SIGN	
87	STREET STOP SIGN	
88	STREET STOP SIGN	
89	STREET STOP SIGN	
90	STREET STOP SIGN	
91	STREET STOP SIGN	
92	STREET STOP SIGN	
93	STREET STOP SIGN	
94	STREET STOP SIGN	
95	STREET STOP SIGN	
96	STREET STOP SIGN	
97	STREET STOP SIGN	
98	STREET STOP SIGN	
99	STREET STOP SIGN	
100	STREET STOP SIGN	

- SITE PLAN NOTES:**
1. THESE NOTES AND FOR RECORDS, REFERENCED TO THE SPECIFICATIONS, SHALL BE CONSIDERED PART OF THE CONTRACT DOCUMENTS. THE CONTRACTOR SHALL BE RESPONSIBLE FOR OBTAINING ALL NECESSARY PERMITS AND APPROVALS FROM THE CITY OF RAPID CITY, SOUTH DAKOTA, AND THE SOUTH DAKOTA DEPARTMENT OF TRANSPORTATION AND PUBLIC SAFETY. THE CONTRACTOR SHALL BE RESPONSIBLE FOR OBTAINING ALL NECESSARY PERMITS AND APPROVALS FROM THE CITY OF RAPID CITY, SOUTH DAKOTA, AND THE SOUTH DAKOTA DEPARTMENT OF TRANSPORTATION AND PUBLIC SAFETY. THE CONTRACTOR SHALL BE RESPONSIBLE FOR OBTAINING ALL NECESSARY PERMITS AND APPROVALS FROM THE CITY OF RAPID CITY, SOUTH DAKOTA, AND THE SOUTH DAKOTA DEPARTMENT OF TRANSPORTATION AND PUBLIC SAFETY.
 2. THE LOCATION OF EXISTING UNDERGROUND UTILITIES AND OTHERS IS AS APPROXIMATELY SHOWN ON THIS PLAN AND SHALL NOT BE RESPONSIBLY VERIFIED BY THE ENGINEER OR THE CONTRACTOR. THE CONTRACTOR SHALL DETERMINE THE EXACT LOCATION OF ALL EXISTING UTILITIES BEFORE COMMENCING WORK. UNDERGROUND LOCATIONS SHALL BE SHOWN BY USING THE TYPICAL CALL-OUTS 250/250/500.
 3. CONSTRUCTION STAKING SHALL BE PROVIDED BY THE ENGINEER.

- SITE PLAN KEYNOTES:**
1. INSTALL CONCRETE DRIVE APPROX WITH CHALKSTONE DRIVE, SEE DETAIL.
 2. INSTALL ACCESSIBLE PAVEMENT, SEE DETAIL.
 3. INSTALL ACCESSIBLE PAVEMENT WITH FRICTION SURFACE, SHOULDER AND BLUE STIPING, SEE DETAIL.
 4. INSTALL 2" REINFORCED CONCRETE ALIANCE DETAIL.
 5. INSTALL 4" HRP OVER 1" AGGREGATE BASE, SEE DETAIL.
 6. INSTALL THICKENED CONCRETE CURB AT HRP BASE, SEE DETAIL.
 7. INSTALL TYPICAL CURB/CONCRETE CURB AND OUTLET, SEE DETAIL.
 8. INSTALL 6" HRP OVER 1" AGGREGATE BASE, SEE DETAIL.
 9. INSTALL 4" HRP OVER 1" AGGREGATE BASE, SEE DETAIL.
 10. INSTALL 4" HRP OVER 1" AGGREGATE BASE, SEE DETAIL.
 11. INSTALL 4" HRP OVER 1" AGGREGATE BASE, SEE DETAIL.
 12. INSTALL 4" HRP OVER 1" AGGREGATE BASE, SEE DETAIL.
 13. INSTALL 4" HRP OVER 1" AGGREGATE BASE, SEE DETAIL.
 14. INSTALL 4" HRP OVER 1" AGGREGATE BASE, SEE DETAIL.
 15. INSTALL 4" HRP OVER 1" AGGREGATE BASE, SEE DETAIL.
 16. INSTALL 4" HRP OVER 1" AGGREGATE BASE, SEE DETAIL.
 17. INSTALL 4" HRP OVER 1" AGGREGATE BASE, SEE DETAIL.
 18. INSTALL 4" HRP OVER 1" AGGREGATE BASE, SEE DETAIL.
 19. INSTALL 4" HRP OVER 1" AGGREGATE BASE, SEE DETAIL.
 20. INSTALL 4" HRP OVER 1" AGGREGATE BASE, SEE DETAIL.
 21. INSTALL 4" HRP OVER 1" AGGREGATE BASE, SEE DETAIL.
 22. INSTALL 4" HRP OVER 1" AGGREGATE BASE, SEE DETAIL.
 23. INSTALL 4" HRP OVER 1" AGGREGATE BASE, SEE DETAIL.
 24. INSTALL 4" HRP OVER 1" AGGREGATE BASE, SEE DETAIL.
 25. INSTALL 4" HRP OVER 1" AGGREGATE BASE, SEE DETAIL.
 26. INSTALL 4" HRP OVER 1" AGGREGATE BASE, SEE DETAIL.
 27. INSTALL 4" HRP OVER 1" AGGREGATE BASE, SEE DETAIL.
 28. INSTALL 4" HRP OVER 1" AGGREGATE BASE, SEE DETAIL.
 29. INSTALL 4" HRP OVER 1" AGGREGATE BASE, SEE DETAIL.
 30. INSTALL 4" HRP OVER 1" AGGREGATE BASE, SEE DETAIL.
 31. INSTALL 4" HRP OVER 1" AGGREGATE BASE, SEE DETAIL.
 32. INSTALL 4" HRP OVER 1" AGGREGATE BASE, SEE DETAIL.
 33. INSTALL 4" HRP OVER 1" AGGREGATE BASE, SEE DETAIL.
 34. INSTALL 4" HRP OVER 1" AGGREGATE BASE, SEE DETAIL.
 35. INSTALL 4" HRP OVER 1" AGGREGATE BASE, SEE DETAIL.
 36. INSTALL 4" HRP OVER 1" AGGREGATE BASE, SEE DETAIL.
 37. INSTALL 4" HRP OVER 1" AGGREGATE BASE, SEE DETAIL.
 38. INSTALL 4" HRP OVER 1" AGGREGATE BASE, SEE DETAIL.
 39. INSTALL 4" HRP OVER 1" AGGREGATE BASE, SEE DETAIL.
 40. INSTALL 4" HRP OVER 1" AGGREGATE BASE, SEE DETAIL.
 41. INSTALL 4" HRP OVER 1" AGGREGATE BASE, SEE DETAIL.
 42. INSTALL 4" HRP OVER 1" AGGREGATE BASE, SEE DETAIL.
 43. INSTALL 4" HRP OVER 1" AGGREGATE BASE, SEE DETAIL.
 44. INSTALL 4" HRP OVER 1" AGGREGATE BASE, SEE DETAIL.
 45. INSTALL 4" HRP OVER 1" AGGREGATE BASE, SEE DETAIL.
 46. INSTALL 4" HRP OVER 1" AGGREGATE BASE, SEE DETAIL.
 47. INSTALL 4" HRP OVER 1" AGGREGATE BASE, SEE DETAIL.
 48. INSTALL 4" HRP OVER 1" AGGREGATE BASE, SEE DETAIL.
 49. INSTALL 4" HRP OVER 1" AGGREGATE BASE, SEE DETAIL.
 50. INSTALL 4" HRP OVER 1" AGGREGATE BASE, SEE DETAIL.
 51. INSTALL 4" HRP OVER 1" AGGREGATE BASE, SEE DETAIL.
 52. INSTALL 4" HRP OVER 1" AGGREGATE BASE, SEE DETAIL.
 53. INSTALL 4" HRP OVER 1" AGGREGATE BASE, SEE DETAIL.
 54. INSTALL 4" HRP OVER 1" AGGREGATE BASE, SEE DETAIL.
 55. INSTALL 4" HRP OVER 1" AGGREGATE BASE, SEE DETAIL.
 56. INSTALL 4" HRP OVER 1" AGGREGATE BASE, SEE DETAIL.
 57. INSTALL 4" HRP OVER 1" AGGREGATE BASE, SEE DETAIL.
 58. INSTALL 4" HRP OVER 1" AGGREGATE BASE, SEE DETAIL.
 59. INSTALL 4" HRP OVER 1" AGGREGATE BASE, SEE DETAIL.
 60. INSTALL 4" HRP OVER 1" AGGREGATE BASE, SEE DETAIL.
 61. INSTALL 4" HRP OVER 1" AGGREGATE BASE, SEE DETAIL.
 62. INSTALL 4" HRP OVER 1" AGGREGATE BASE, SEE DETAIL.
 63. INSTALL 4" HRP OVER 1" AGGREGATE BASE, SEE DETAIL.
 64. INSTALL 4" HRP OVER 1" AGGREGATE BASE, SEE DETAIL.
 65. INSTALL 4" HRP OVER 1" AGGREGATE BASE, SEE DETAIL.
 66. INSTALL 4" HRP OVER 1" AGGREGATE BASE, SEE DETAIL.
 67. INSTALL 4" HRP OVER 1" AGGREGATE BASE, SEE DETAIL.
 68. INSTALL 4" HRP OVER 1" AGGREGATE BASE, SEE DETAIL.
 69. INSTALL 4" HRP OVER 1" AGGREGATE BASE, SEE DETAIL.
 70. INSTALL 4" HRP OVER 1" AGGREGATE BASE, SEE DETAIL.
 71. INSTALL 4" HRP OVER 1" AGGREGATE BASE, SEE DETAIL.
 72. INSTALL 4" HRP OVER 1" AGGREGATE BASE, SEE DETAIL.
 73. INSTALL 4" HRP OVER 1" AGGREGATE BASE, SEE DETAIL.
 74. INSTALL 4" HRP OVER 1" AGGREGATE BASE, SEE DETAIL.
 75. INSTALL 4" HRP OVER 1" AGGREGATE BASE, SEE DETAIL.
 76. INSTALL 4" HRP OVER 1" AGGREGATE BASE, SEE DETAIL.
 77. INSTALL 4" HRP OVER 1" AGGREGATE BASE, SEE DETAIL.
 78. INSTALL 4" HRP OVER 1" AGGREGATE BASE, SEE DETAIL.
 79. INSTALL 4" HRP OVER 1" AGGREGATE BASE, SEE DETAIL.
 80. INSTALL 4" HRP OVER 1" AGGREGATE BASE, SEE DETAIL.
 81. INSTALL 4" HRP OVER 1" AGGREGATE BASE, SEE DETAIL.
 82. INSTALL 4" HRP OVER 1" AGGREGATE BASE, SEE DETAIL.
 83. INSTALL 4" HRP OVER 1" AGGREGATE BASE, SEE DETAIL.
 84. INSTALL 4" HRP OVER 1" AGGREGATE BASE, SEE DETAIL.
 85. INSTALL 4" HRP OVER 1" AGGREGATE BASE, SEE DETAIL.
 86. INSTALL 4" HRP OVER 1" AGGREGATE BASE, SEE DETAIL.
 87. INSTALL 4" HRP OVER 1" AGGREGATE BASE, SEE DETAIL.
 88. INSTALL 4" HRP OVER 1" AGGREGATE BASE, SEE DETAIL.
 89. INSTALL 4" HRP OVER 1" AGGREGATE BASE, SEE DETAIL.
 90. INSTALL 4" HRP OVER 1" AGGREGATE BASE, SEE DETAIL.
 91. INSTALL 4" HRP OVER 1" AGGREGATE BASE, SEE DETAIL.
 92. INSTALL 4" HRP OVER 1" AGGREGATE BASE, SEE DETAIL.
 93. INSTALL 4" HRP OVER 1" AGGREGATE BASE, SEE DETAIL.
 94. INSTALL 4" HRP OVER 1" AGGREGATE BASE, SEE DETAIL.
 95. INSTALL 4" HRP OVER 1" AGGREGATE BASE, SEE DETAIL.
 96. INSTALL 4" HRP OVER 1" AGGREGATE BASE, SEE DETAIL.
 97. INSTALL 4" HRP OVER 1" AGGREGATE BASE, SEE DETAIL.
 98. INSTALL 4" HRP OVER 1" AGGREGATE BASE, SEE DETAIL.
 99. INSTALL 4" HRP OVER 1" AGGREGATE BASE, SEE DETAIL.
 100. INSTALL 4" HRP OVER 1" AGGREGATE BASE, SEE DETAIL.

READY ARCHITECTURAL ASSOCIATES, INC.
11606 Woyland Blvd. 56115
Minnetonka, Minnesota
(952)797-9221 Fax: (952)352-3991

Kadmas Lee & Jackson
Engineers Surveyors Planners

GANDOLFGROUP, LLC
5354 Parkside Drive
Suite 350
St. Louis Park, MN 55416-1623

EDGEWOOD ESTATES
480 CHALKSTONE DRIVE
RAPID CITY, S.D.

PROJECT NO: 0504
DATE: 07/05
DRAWN BY: JRM
CHECKED BY: JRM
FILE NO: 0504
PLOT DATE: 07/05

REVISIONS:

REV#	DATE	BY
1		
2		
3		
4		
5		
6		
7		
8		
9		
10		

COPYRIGHT 2004 BY READY ARCHITECTURAL ASSOCIATES, INC.

SHEET SCALE: AS SHOWN
SHEET TITLE: LAYOUT & STAKING PLAN

SHEET NUMBER: E-C3.0

