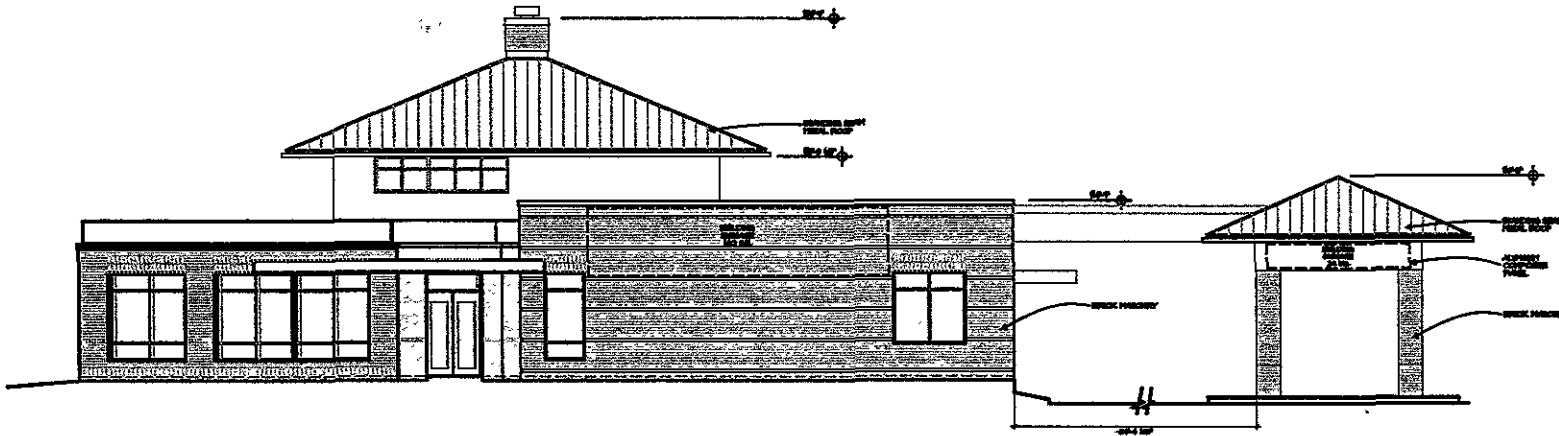


PRELIMINARY
NOT FOR
CONSTRUCTION

ARC International inc
www.arcintl.com
ARC International
1824 Clark Street Suite 101
Rapid City, South Dakota 57702
tel: 605-341-2706 • fax: 605-341-3851



1 SOUTH ELEVATION
A3.1 1/16"=1'-0"



2 WEST ELEVATION
A3.1 1/16"=1'-0"

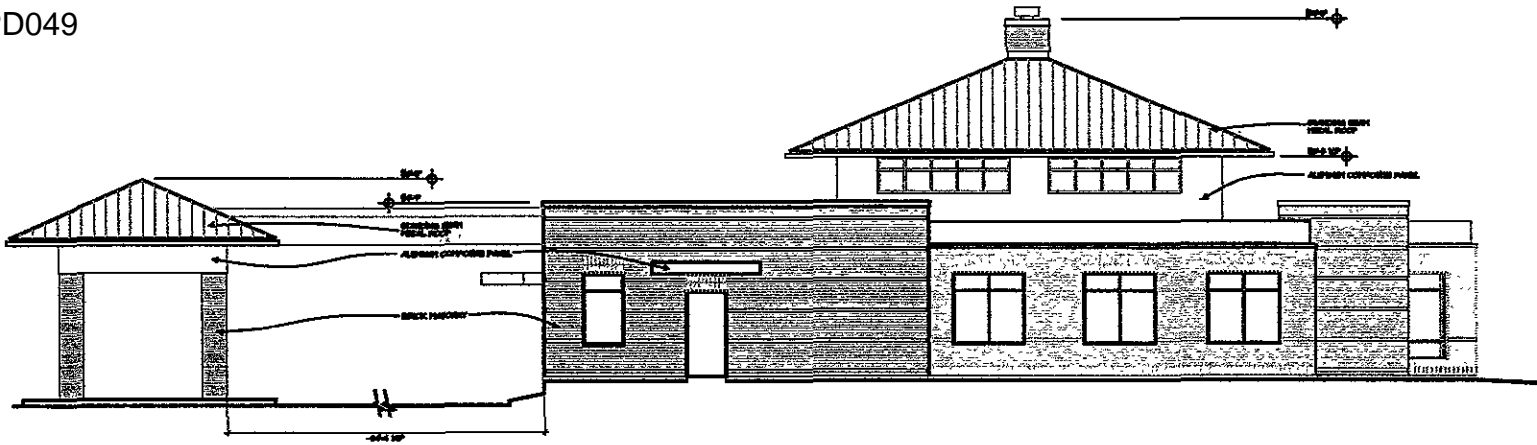
NO.	DESCRIPTION	DATE
1	ISSUED FOR PERMIT	7/18/05
2	REVISION	
3	REVISION	
4	REVISION	
5	REVISION	
6	REVISION	
7	REVISION	
8	REVISION	
9	REVISION	
10	REVISION	

RECEIVED
JUL 08 2005
Rapid City Growth
Management Department

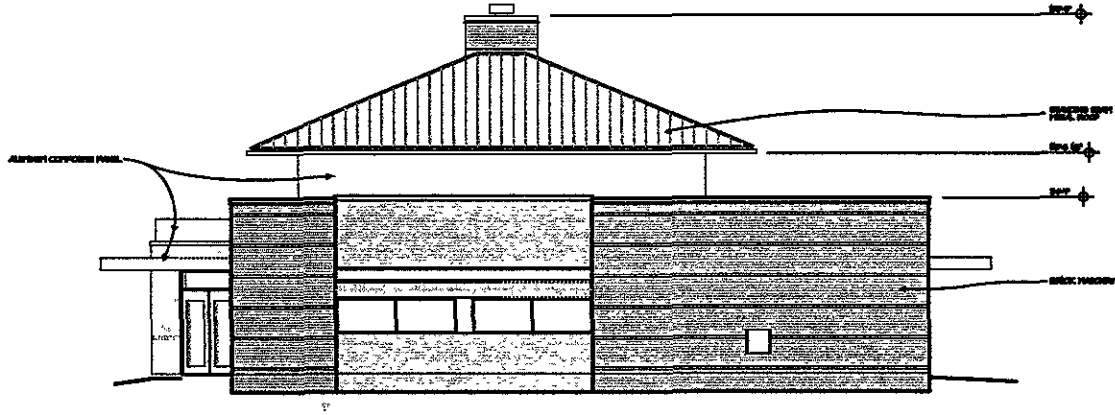
PROJECT NO: 2005-011
DATE: 7/18/05
DRAWN BY: RT

Black Hills Federal Credit Union
Rapid City, South Dakota
SCALE: ARCHITECTURAL ELEVATIONS

A3.1



1 NORTH ELEVATION
A32 1/16"=1'-0"



2 EAST ELEVATION
A32 1/16"=1'-0"

MATERIAL SCHEDULE	
BRICK FACED	BRICK
ALUMINUM COMPOSITE PANEL	ALUMINUM COMPOSITE PANEL
ALUMINUM COMPOSITE PANEL	ALUMINUM COMPOSITE PANEL
ALUMINUM COMPOSITE PANEL	ALUMINUM COMPOSITE PANEL
ALUMINUM COMPOSITE PANEL	ALUMINUM COMPOSITE PANEL
ALUMINUM COMPOSITE PANEL	ALUMINUM COMPOSITE PANEL
ALUMINUM COMPOSITE PANEL	ALUMINUM COMPOSITE PANEL
ALUMINUM COMPOSITE PANEL	ALUMINUM COMPOSITE PANEL
ALUMINUM COMPOSITE PANEL	ALUMINUM COMPOSITE PANEL
ALUMINUM COMPOSITE PANEL	ALUMINUM COMPOSITE PANEL

RECEIVED

JUL 08 2005

Rapid City Growth
Management Department

ARC International inc.
www.ARCINTL.com
1826 Clark Street, Suite 101
Rapid City, South Dakota 57702
tel: 605-541-2700 fax: 605-541-4581

Black Hills Federal Credit Union
Rapid City, South Dakota

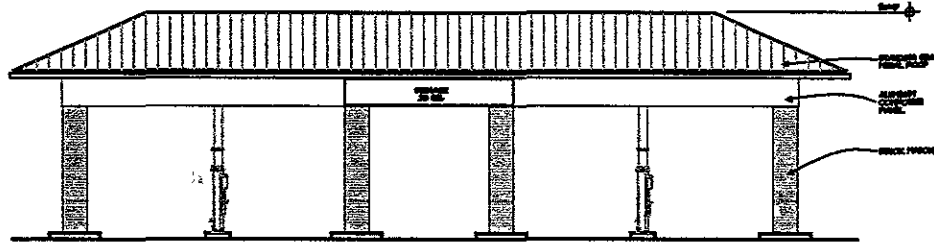
A3.2

CONTRACT NO. 2005-011 DATE 7/8/05 DRAWN BY ET

RECEIVED

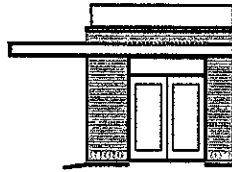
JUL 08 2005

Rapid City Growth
Management Department

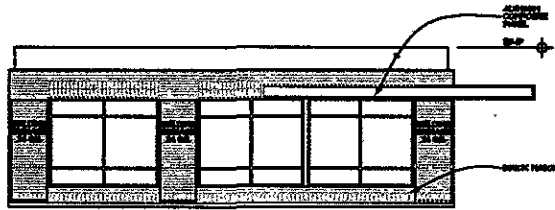


Material:	
Roofing:	Asph/Flt
Exterior Wall:	Brick
Interior Wall:	Brick
Floor:	Brick
Foundation:	Brick
Window:	Brick
Door:	Brick
Trim:	Brick
Paint:	Brick
Sign:	Brick
Lighting:	Brick
Other:	Brick

1 DRIVE-UP ELEVATION
A33 1/16"=1'-0"



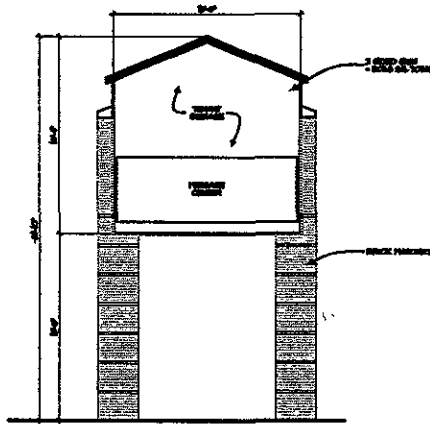
2 ELEVATION
A33 1/16"=1'-0"



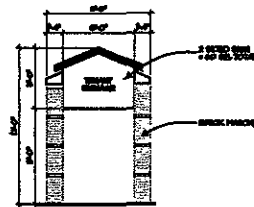
3 ELEVATION
A33 1/16"=1'-0"



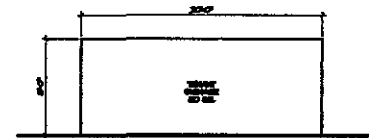
4 ELEVATION
A33 1/16"=1'-0"



6 PYLON SIGN ELEVATION
A33 1/16"=1'-0"



5 PYLON SIGN ELEVATION
A33 1/16"=1'-0"



7 WALL SIGN ELEVATION
A33 1/16"=1'-0"

PRELIMINARY
NOT FOR
CONSTRUCTION

ARC International Inc.
www.ARCINTL.com
1895 Clark Street, Suite 101
Rapid City, South Dakota 57703
Tel: 605-341-2266 Fax: 605-341-3951

Black Hills Federal Credit Union
Rapid City, South Dakota
2005-011
Date: 7/8/05
Sheet: 1 of 1

Black Hills Federal Credit Union
Rapid City, South Dakota
2005-011
Date: 7/8/05
Sheet: 1 of 1

A3.3