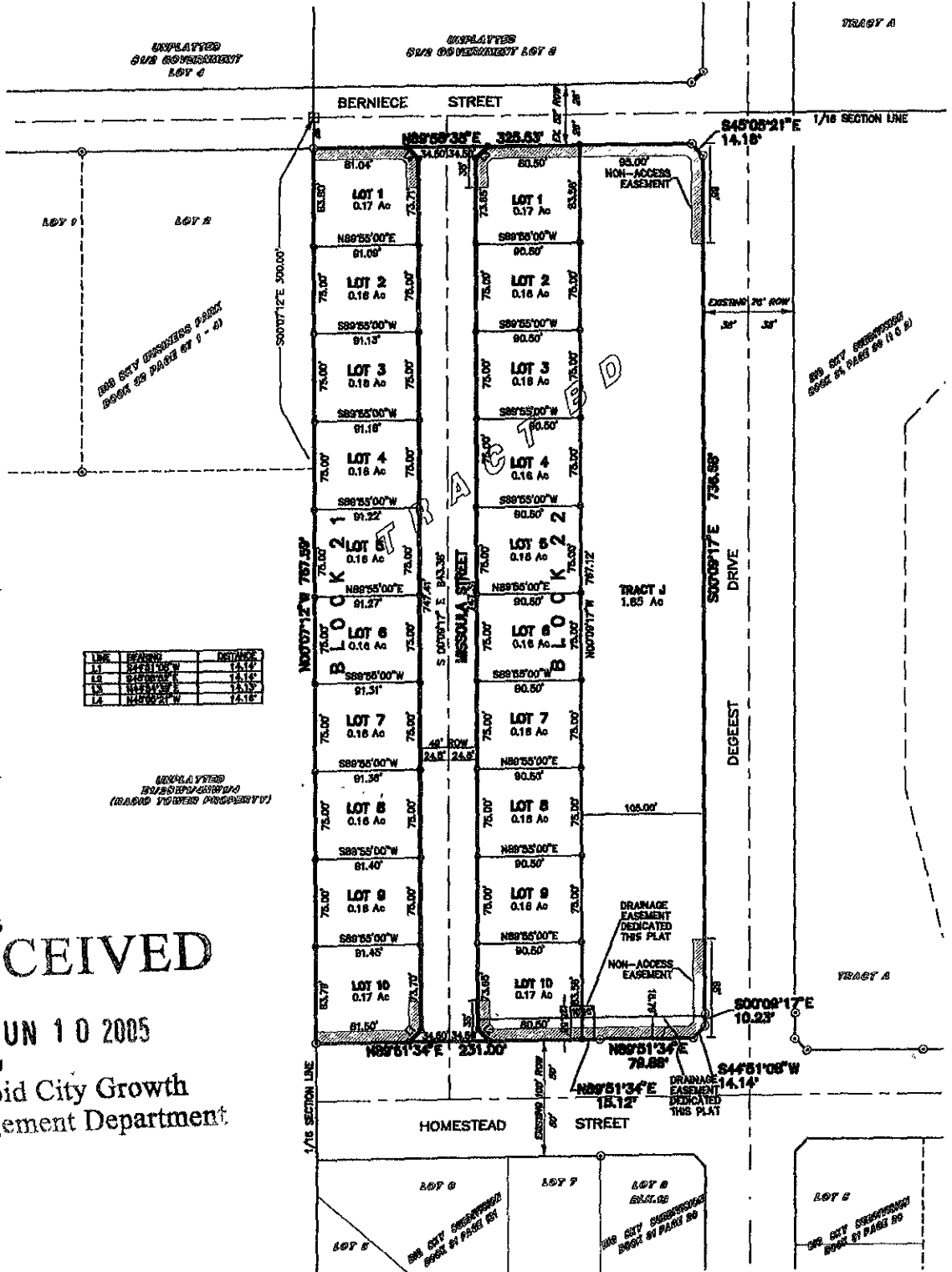


LOTS 1 THRU 10 OF B. & 24 LOTS 1 THRU 10 OF BLOCK 24, TRACT J, DEDICATED STREET, BEING A SUBDIVISION OF TRACT NO. LOCATED IN THE S.W. 1/4 OF SECTION 8, T2S, R2E, B1E1, CITY OF RAPID CITY, PENNINGTON COUNTY, SOUTH DAKOTA



LINE	BEARING	DISTANCE
1	S89°55'00\"W	14.12'
2	S89°55'00\"W	14.12'
3	S89°55'00\"W	14.12'
4	S89°55'00\"W	14.12'

UNPLATTED SUR GOVERNMENT LOT 8 (BEING TOWERS PROPERTY)

05-104-004-0046 Drawings PLAT CHECKED MAY 20 2005 6:53:22 PM 1:23:1041

RECEIVED JUN 10 2005 Rapid City Growth Management Department

LEGEND

- DENOTES SET 5/8" REBAR WITH SURVEY CAP MARKED "RLS 3077"
- ⊙ DENOTES FOUND 5/8" REBAR WITH SURVEY CAP MARKED "RLS 3077"
- DENOTES FOUND SURVEY MONUMENT AS NOTED

NOTE

PLAY OF TRACT BD RECORDED IN PLAT BOOK 32 PAGE 150

NOTES

- MAJOR DRAINAGE AND UTILITY EASEMENTS ARE HEREBY ESTABLISHED 6' WIDE ON THE INTERIOR SIDE OF ALL LOT LINES AND RIGHT-OF-WAY. (EXCEPT WHERE MAJOR DRAINAGE EASEMENTS ARE LOCATED)
- TOTAL PLATTED AREA: 5.91 ACRES; LOTS: 4.99 ACRES DEDICATED PUBLIC ROW: 0.92 ACRES
- ANY MAJOR DRAINAGE EASEMENT SHOWN HEREON SHALL BE KEPT FREE OF ALL OBSTRUCTIONS INCLUDING BUT NOT LIMITED TO BUILDINGS, WALLS, FENCES, HEDGES, TREES AND SHRUBS. THESE EASEMENTS GRANT TO ALL PUBLIC AUTHORITIES THE RIGHT TO CONSTRUCT, OPERATE, MAINTAIN, INSPECT AND REPAIR SUCH IMPROVEMENTS AND STRUCTURES AS IT DEEMS EXPEDIENT TO FACILITATE DRAINAGE FROM ANY SOURCE.
- NON-ACCESS EASEMENTS ARE HEREBY ESTABLISHED ALONG THE FIRST FIFTY FEET OF CORNER LOTS OR AS INDICATED HEREON.

