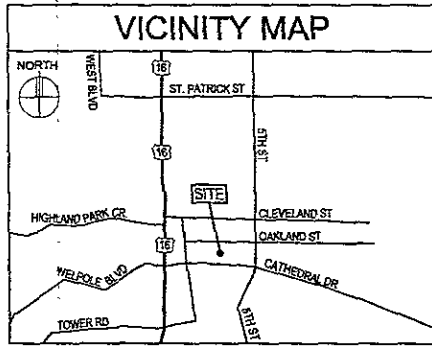


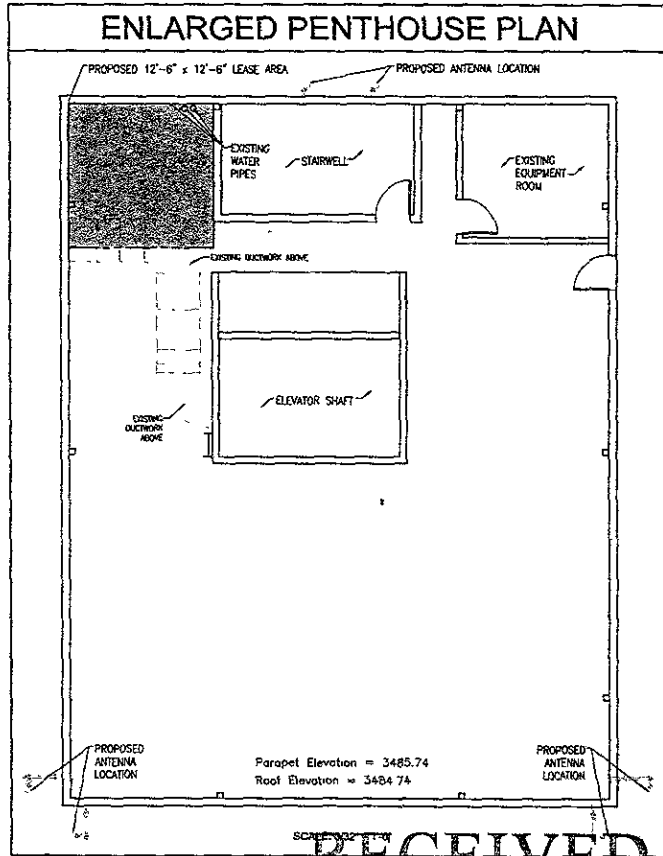
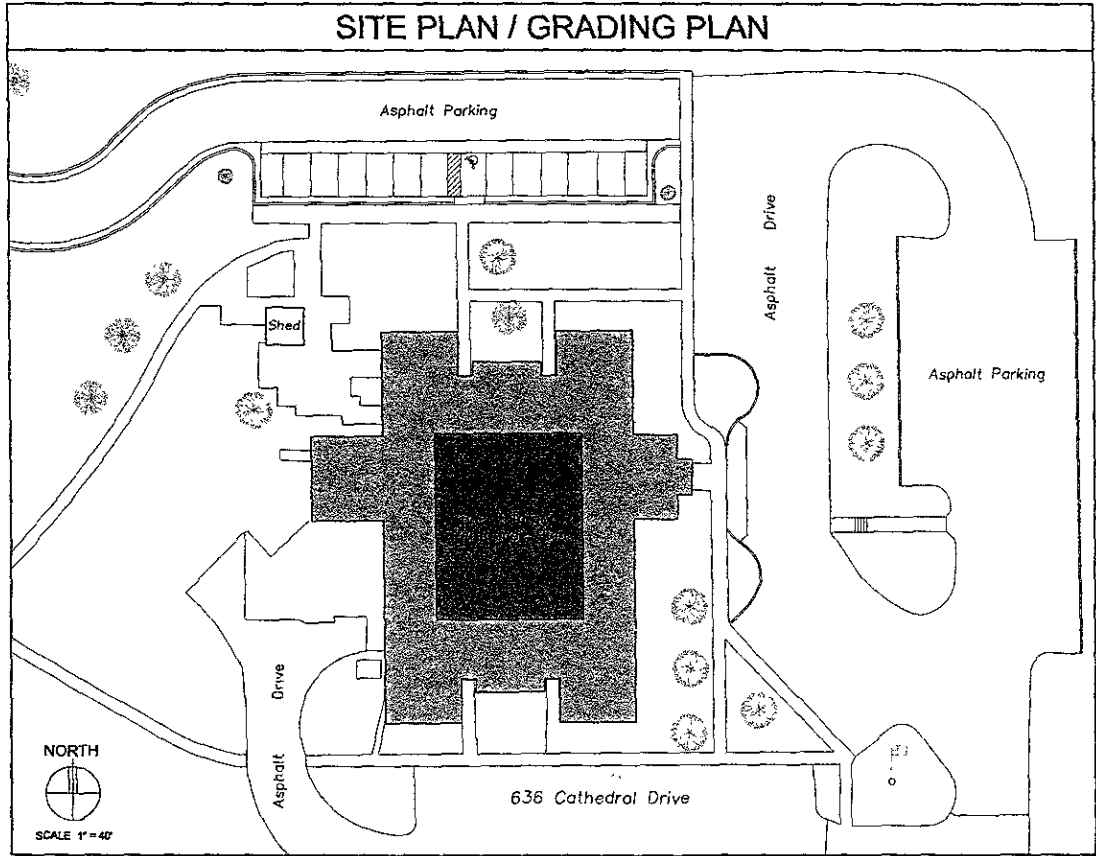
VERIZON WIRELESS



PROJECT INFORMATION	
SITE NAME:	RCYC SOUTH RAPID CITY
SITE ADDRESS:	636 CATHEDRAL DRIVE RAPID CITY, SD 57701
COUNTY:	PENNINGTON COUNTY
GROUND ELEVATION:	0' AGL - 3389.40
ANTENNA TIP HEIGHT:	94'-0" AGL - 3483.40 AMSL
ANTENNA CENTERLINE HEIGHT:	90'-0" AGL - 3479.40
PARAPET HEIGHT:	96'-4" AGL - 3485.74 AMSL
OVERALL STRUCTURE HEIGHT:	100'-0" AGL - 3488.40 AMSL
LEGAL DESCRIPTION:	TRACT A OF LOT 2, NW1/4 OF SW1/4, SECTION 12, T14, R7E, S14M, RAPID CITY, PENNINGTON COUNTY, SOUTH DAKOTA

Pennington County, South Dakota
 Licensed Professional Engineer
 License No. 111111
 PROJECT: 05SR033
 DATE: 06-01-05

DESIGN
 ROBERT L. CLARK, P.E.
 ROBERT L. ANDERST
 SOUTH DAKOTA ENGINEERS & ARCHITECTS
 500 W. WASHINGTON ST. SUITE 200
 RAPID CITY, SD 57701
 (605) 342-0000 FAX (605) 342-0002



VERIZON WIRELESS
 9855 69th Avenue North, Suite # 100
 Plymouth, MN 55042

PROJECT:
RCYC SOUTH RAPID CITY
 636 CATHEDRAL DRIVE
 RAPID CITY, SD 57701

SHEET CONTENTS:
 PROJECT INFORMATION
 VICINITY MAP
 ENLARGED PENTHOUSE PLAN
 SITE PLAN / GRADING PLAN

DRAWN BY: TAB
 DATE: 06-01-05
 CHECKED BY: TRB

RECEIVED