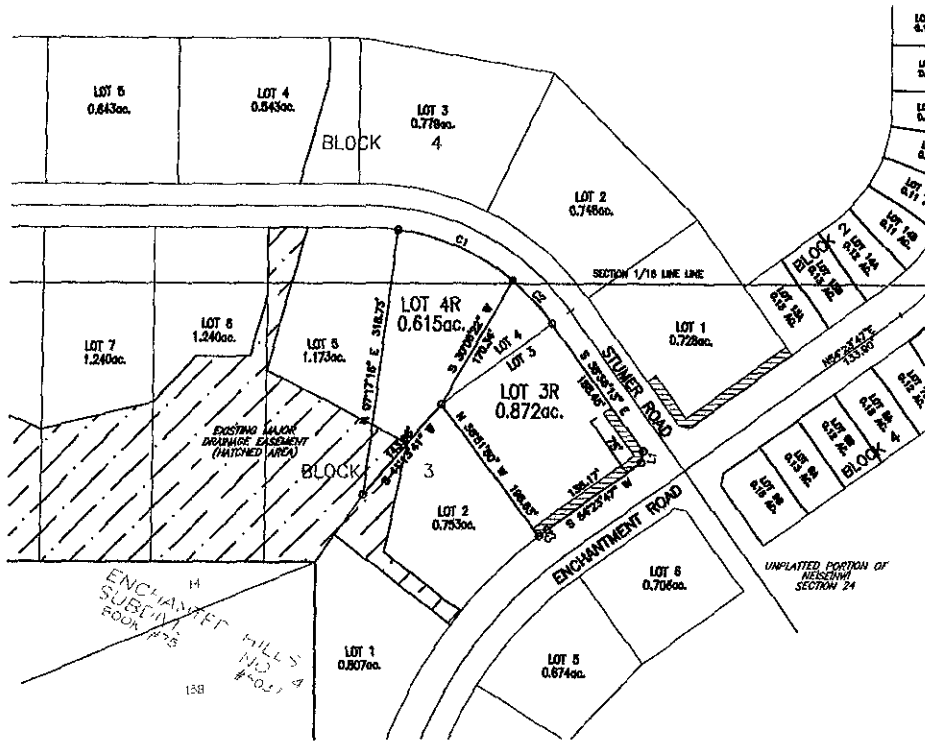


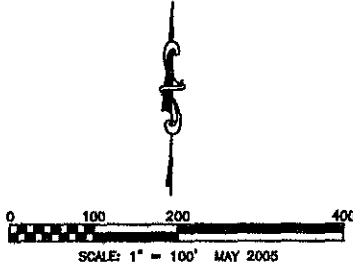
PLAT OF EASTRIDGE ESTATES SUBDIVISION

LOT 3R AND LOT 4R, BLOCK 1,
FORMERLY LOT 3 AND LOT 4, BLOCK 1 OF EASTRIDGE ESTATES SUBDIVISION
LOCATED IN THE NW1/4 OF SECTION 24, T1N, R7E, B.H.M.,
CITY OF RAPID CITY, PENNINGTON COUNTY, SOUTH DAKOTA



| LINE BEARING | DISTANCE |
|------------------|----------|
| L1 S 66°23'51" W | 14.14' |

| CURVE | RADIUS | ARC LENGTH | CHORD LENGTH | CHORD BEARING |
|-------|---------|------------|--------------|---------------|
| C1 | 274.00' | 154.43' | 132.30' | S 86°33'59" E |
| C2 | 274.00' | 70.88' | 70.88' | S 43°00'43" E |
| C3 | 538.00' | 11.83' | 11.83' | N 83°48'58" E |



LEGEND

- DENOTES SET 5/8" REBAR WITH SURVEY CAP MARKED 'RLS397'
- DENOTES FOUND SURVEY MONUMENT

PLAT DOCUMENT

EASTRIDGE ESTATES SUBDIVISION
PLAT BOOK 31 PAGE 190

NOTES:

1. MINOR DRAINAGE AND UTILITY EASEMENTS ARE HEREBY ESTABLISHED 8' WIDE ON THE INTERIOR SIDE OF ALL LOT LINES AND RIGHT-OF-WAY, (EXCEPT WHERE MAJOR DRAINAGE EASEMENTS ARE LOCATED)
2. TOTAL PLATTED AREA: 1.487 ACRES
LOTS: 1.487 ACRES
3. ANY MAJOR DRAINAGE EASEMENT SHOWN HEREON SHALL BE KEPT FREE OF ALL OBSTRUCTIONS INCLUDING BUT NOT LIMITED TO BUILDINGS, WALLS, FENCES, HEDGES, TREES, AND SHRUBS. THESE THE RIGHT TO CONSTRUCT, OPERATE, MAINTAIN, INSPECT AND REPAIR SUCH IMPROVEMENTS AND STRUCTURES AS IT DEEMS EXPEDIENT TO FACILITATE DRAINAGE FROM ANY SOURCE.
4. NON-ACCESS EASEMENTS ARE HEREBY ESTABLISHED ALONG THE FIRST FIFTY FEET OF CORNER LOTS OR AS INDICATED HEREON.