

05PL112

PLAT OF

# LOT BR, SCHOENHARD SUBDIVISION LOT 6R, MANN SUBDIVISION

(formerly Lot B of Schoenhard Subdivision, Lot 6 of Mann Subdivision,  
a portion of Vacated Section Line Right-of-Way)

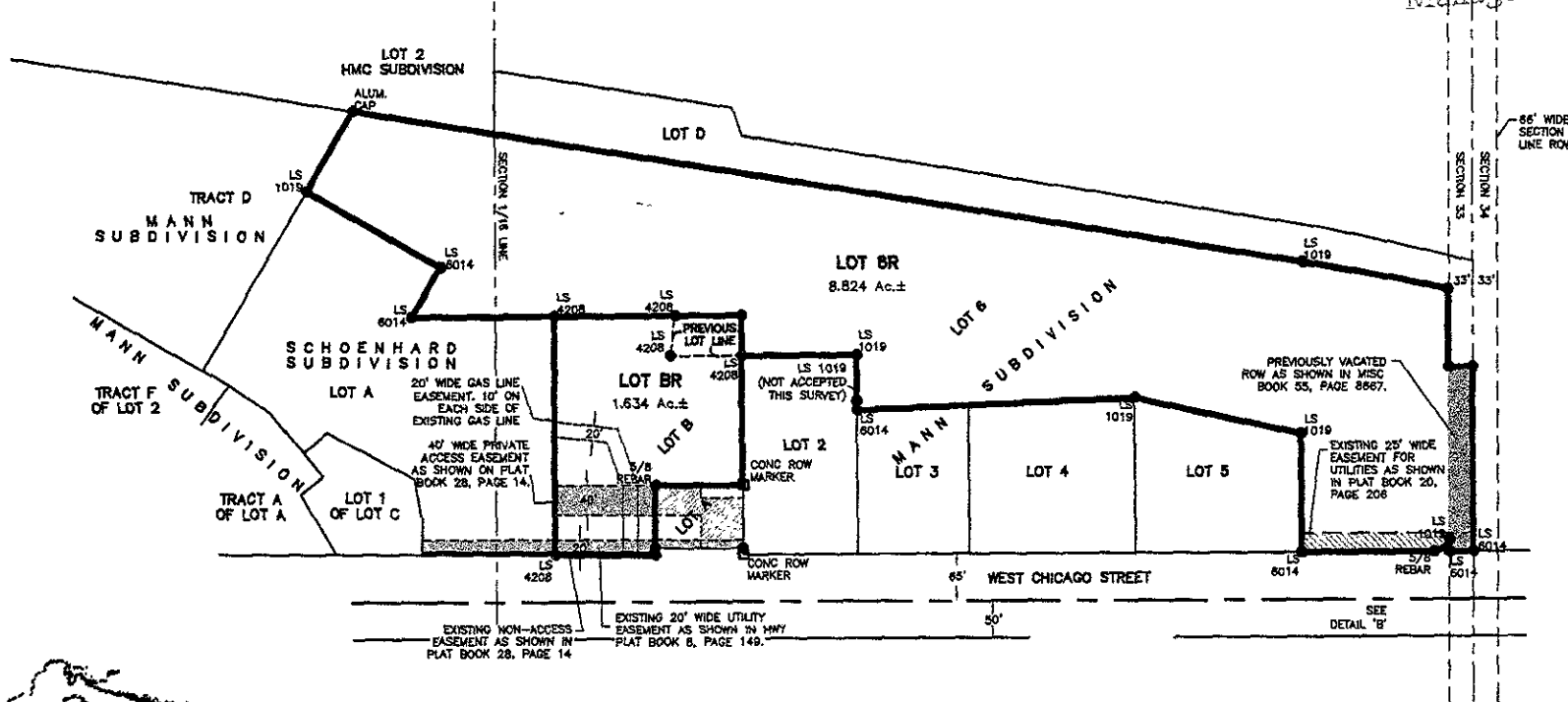
LOCATED IN THE N1/2 OF SE1/4,  
SECTION 33, T2N, R7E, BHM

RAPID CITY, PENNINGTON COUNTY, SOUTH DAKOTA

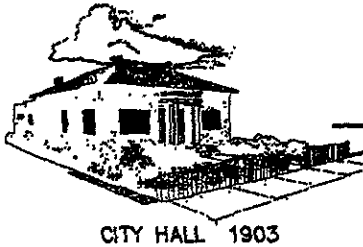
RECEIVED

JUN 10 2005

Rapid City Growth  
Management Department



JUNE 6, 2005  
SCALE = N.T.S



CITY HALL 1903

## Renner Associates, LLC.

616 Sixth St. \* Rapid City, SD 57701 \* 605/721-7310

FAX: 605/721-7313 \* E-MAIL: Gary@RennerAssoc.com

\* Spearfish, SD 605/717-0016 \*

ADP #2104