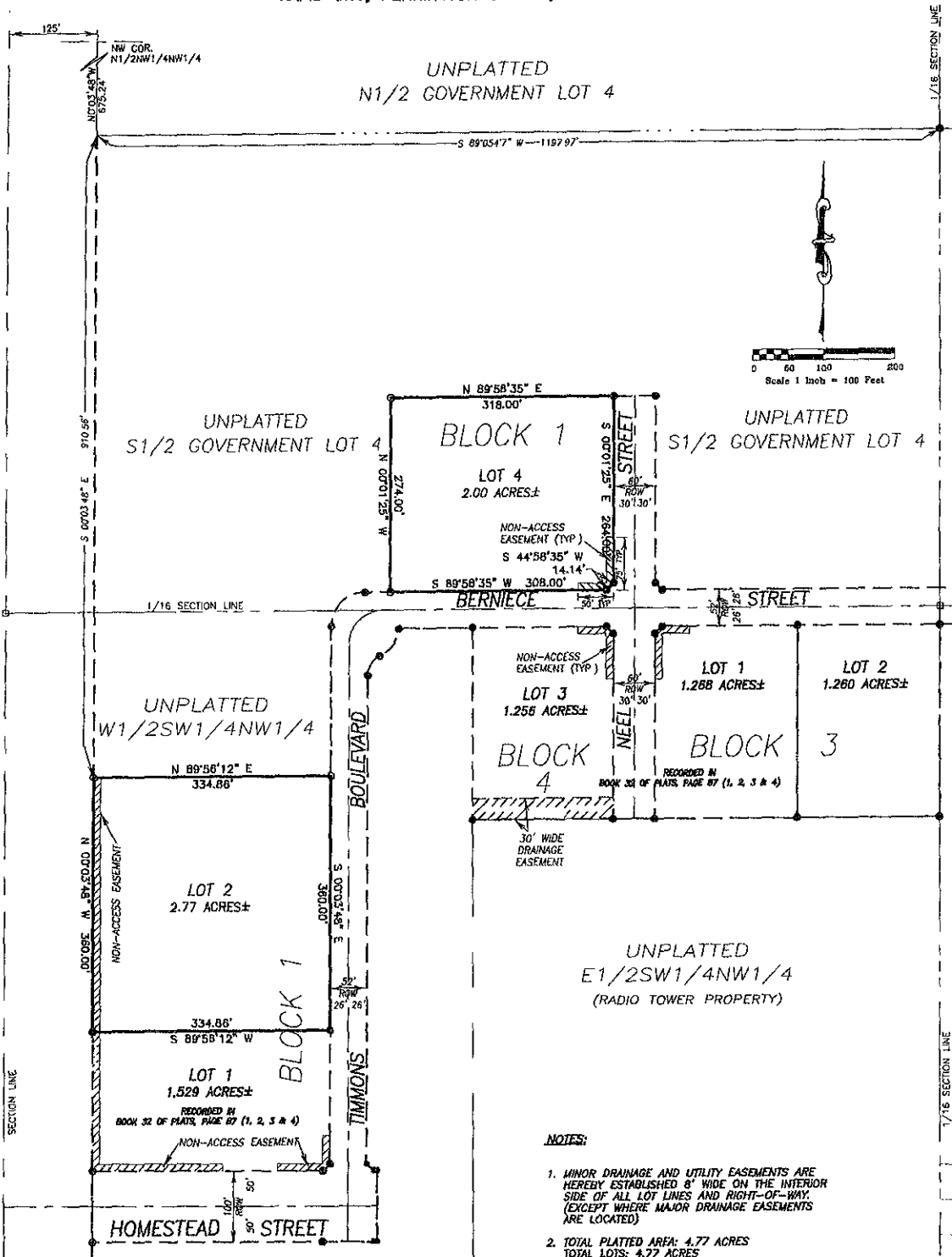


# PLAT OF BIG SKY BUSINESS PARK

LOT 2 AND LOT 4, BLOCK 1,  
LOCATED IN THE W1/2SW1/4NW1/4 AND THE S1/2 GOVERNMENT LOT 4 OF  
SECTION 3, T1N, R8E, B.H.M.,  
RAPID CITY, PENNINGTON COUNTY, SOUTH DAKOTA



**NOTES:**

- MINOR DRAINAGE AND UTILITY EASEMENTS ARE HEREBY ESTABLISHED 8" WIDE ON THE INTERIOR SIDE OF ALL LOT LINES AND RIGHT-OF-WAY. (EXCEPT WHERE MAJOR DRAINAGE EASEMENTS ARE LOCATED)
- TOTAL PLATTED AREA: 4.77 ACRES  
TOTAL LOTS: 4.77 ACRES
- ANY MAJOR DRAINAGE EASEMENT SHOWN HEREON SHALL BE KEPT FREE OF ALL OBSTRUCTIONS INCLUDING BUT NOT LIMITED TO BUILDINGS, WALLS, FENCES, HEDGES, TREES, AND SHRUBS. THESE EASEMENTS GRANT TO ALL PUBLIC AUTHORITIES THE RIGHT TO CONSTRUCT, OPERATE, MAINTAIN, INSPECT AND REPAIR SUCH IMPROVEMENTS AND STRUCTURES AS IT DEEMS EXPEDIENT TO FACILITATE DRAINAGE FROM ANY SOURCE.
- NON-ACCESS EASEMENTS ARE HEREBY ESTABLISHED ALONG THE FIRST FIFTY FEET OF CORNER LOTS OR AS INDICATED HEREON.

**LEGEND**

- DENOTES SET 5/8" REBAR WITH SURVEY CAP MARKED "RLS 3977"
  - DENOTES FOUND 5/8" REBAR WITH SURVEY CAP MARKED "RLS 3977"
  - DENOTES NON-ACCESS EASEMENT
- BASIS OF BEARING: PER PREVIOUSLY RECORDED PLAT(S).

# RECEIVED

JUN 10 2005

Rapid City Growth  
Management Department

<p><b>PREPARED BY:</b> ARLETH &amp; ASSOCIATES</p>	<p>25 KIRK ROAD DEADWOOD, SD 57732 605-578-1637</p>	<p>JOB NO 01-0043</p>	<p>DATE: JUNE 6, 2005 SCALE: 1" = 100' DRAWN: KT/TV</p>	<p>APPROVED: JMA DWG: BUS-PARK-PLAT DWG</p>	<p>PREPARED FOR DREAM DESIGN INTERNATIONAL, INC 628 KANSAS CITY STREET, SUITE 4 RAPID CITY, SOUTH DAKOTA 57701 (605) 948-0558</p>
--	---	---------------------------	---	---	---