



Design Development

Red Rock Meadows Park

Rapid City, South Dakota

PROJECT NO: R04-22
 FILE NUMBER: D01 R04-22.dwg
 DATE: MARCH 2, 2008



RED ROCK MEADOWS PARK

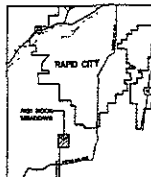
Red Rock Meadows Rapid City, South Dakota

PROJECT NO: R04-212
DATE: MAY 18, 2005

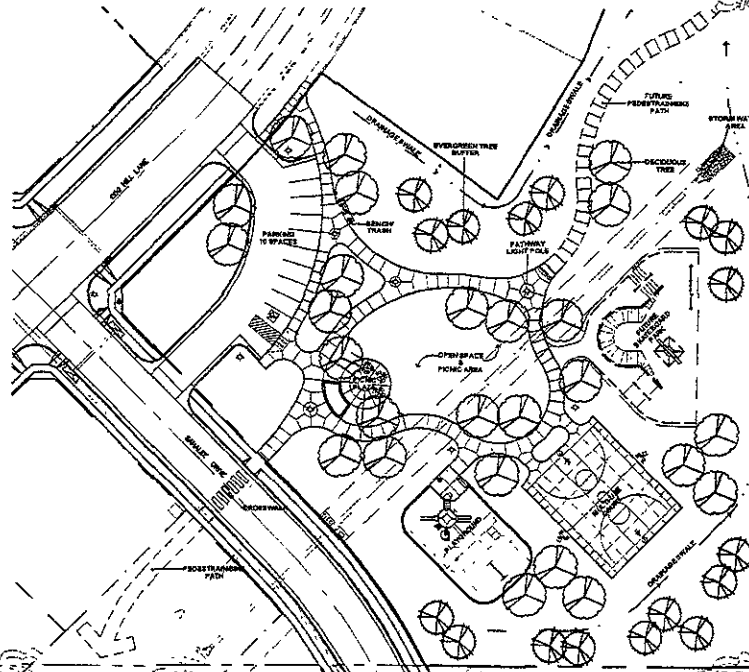
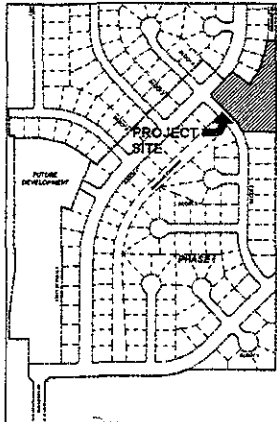
SHEET INDEX:

- L1 LAYOUT PLAN
- L2 GRADING PLAN
- L3 EXPANDED PLAN & DETAILS
- L4 SITE DETAILS
- L5 IRRIGATION PLAN
- L6 LANDSCAPE PLAN
- L7 IRRIGATION & LANDSCAPE DETAILS
- E1 ELECTRICAL PLAN & DETAILS

VICINITY MAP



RED ROCK MEADOWS

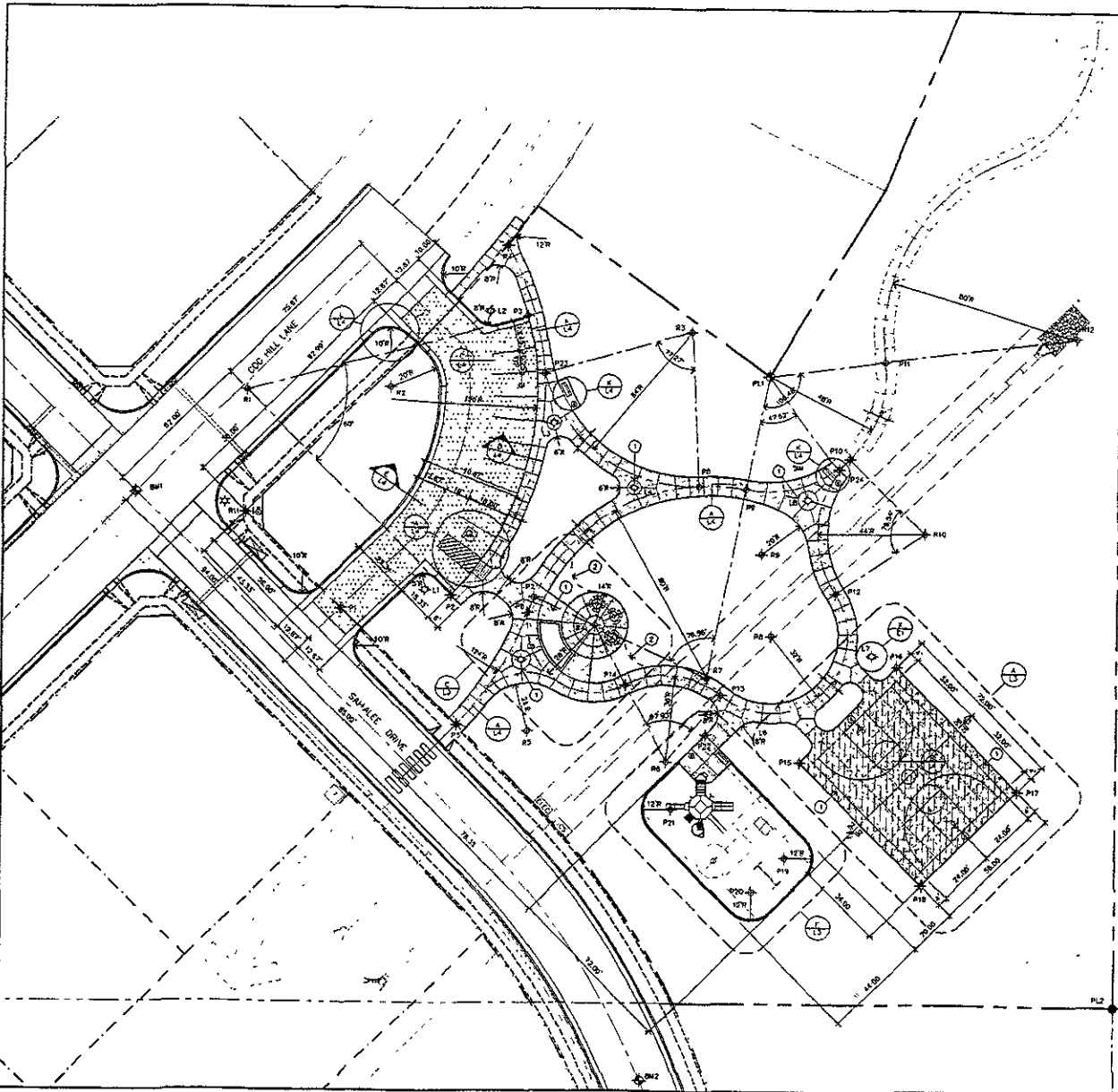


ELECTRICAL CONSULTANT:

Doug Vallis
Electrical Design Consultants
2527 Junction Drive
Rapid City, SD 57702
(605) 341-1250



Landscape Architecture • Site Development
Planning • Urban Design • Park & Recreation



COORDINATE DATA

POINT NO.	EAST-WEST	NORTH-SOUTH
P1	12295.37	11845.70
P2	12344.63	11801.35
P3	12375.75	11787.05
P4	12362.07	11796.74
P5	12347.45	11797.61
P6	12376.70	11823.99
P7	12372.28	11850.07
P8	12452.68	11897.21
P9	12487.37	11892.87
P10	12510.31	11708.00
P11	12524.10	11718.25
P12	12504.92	11825.86
P13	12458.08	11822.50
P14	12418.09	11814.18
P15	12491.22	11582.51
P16	12530.82	11622.11
P17	12481.73	11571.19
P18	12427.12	11527.80
P19	12426.21	11542.97
P20	12471.42	11523.71
P21	12437.48	11562.71
P22	12453.62	11593.82
P23	12382.97	11743.56
P24	12395.36	11704.58

POINT NO.	EAST-WEST	NORTH-SOUTH
R1	12295.79	11734.71
R2	12318.10	11723.70
R3	12444.12	11785.11
R4	12404.78	11828.83
R5	12278.96	11504.00
R6	12435.11	11802.46
R7	12452.12	11871.23
R8	12478.49	11834.53
R9	12473.84	11868.00
R10	12541.28	11877.85
R11	12296.78	11883.30
R12	12603.42	11709.69
R13	0000.00	0000.00

POINT NO.	EAST-WEST	NORTH-SOUTH
L1	12333.79	11853.70
L2	12380.11	11789.29
L3	12385.67	11722.86
L4	12420.87	11896.27
L5	12374.31	11824.47
L6	12470.54	11984.15
L7	12520.88	11826.92
L8	12493.32	11691.77

GENERAL NOTES:

- THE CONTRACTOR IS RESPONSIBLE FOR LOCATING ALL PUBLIC AND PRIVATE UTILITIES IN THE PROJECT AREA PRIOR TO CONSTRUCTION. NOTIFY ARCHITECT OF ALL DISCREPANCIES. SOUTH DAKOTA ONE CALL NOTIFICATION: 800-788-1974
- ALL CONSTRUCTION TO BE IN ACCORDANCE WITH ALL APPLICABLE CODES. NOTHING IN THIS DRAWING SHALL RELIEVE THE CONTRACTOR FROM COMPLYING WITH ANY APPROPRIATE SAFETY REGULATIONS.
- IT WILL BE THE RESPONSIBILITY OF THE CONTRACTOR TO COORDINATE CONSTRUCTION ACTIVITIES WITH OWNER.
- THE CONTRACTOR IS RESPONSIBLE FOR FIELD STAKING, LAYOUT AND MAINTAINING FIELD REFERENCES AND BENCH MARKS.
- THE CONTRACTOR IS TO REVIEW FIELD STAKING WITH ARCHITECT PRIOR TO CONSTRUCTION.
- REFER TO SUBMITTAL DRAWING PLANS FOR PERMITS AND SPECIFICATIONS.
- SPECIFICATIONS, SPECIFICATIONS TO BE FOLLOWED UNDER THIS CONTRACT ARE THE CITY OF RAPID CITY STANDARD SPECIFICATION FOR PUBLIC WORKS CONSTRUCTION (GOOD, COMMON) AND ANY SPECIAL PROVISIONS, SPECIAL CONDITIONS AND/OR DETAIL SPECIFICATIONS PERTAINING TO THIS CONTRACT.
- REFER TO SHEET L3 FOR SITE FURNISHING SCHEDULE.

LAYOUT KEY NOTES:

1. COLOR CONCRETE FINISHED: ADD COLOR ADJUSTERS TO CONCRETE FOR COLOR FURNISHING SCHEDULES AS INDICATED ON PLAN. REFER TO SHEET L3.
2. LANDSCAPE EDDING - SEE LANDSCAPE PLAN DETAIL.

REFERENCE DATA

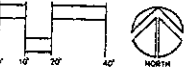
POINT NO.	EAST-WEST	NORTH-SOUTH	ELEVATION
BM1	12214.53	11692.79	3899.07
BM2	12425.30	11445.72	3970.22

PROPERTY CORNERS	X	Y
PL1	12478.31	11742.99
PL2	12823.22	11481.96

LEGEND:

- 4" CONCRETE PAVEMENT
- 8" CONCRETE PAVEMENT
- COLOR CONCRETE
- ASPHALT PAVEMENT
- BM1 BENCH MARK
- P1 COORDINATE POINT

LAYOUT PLAN



126 S. Joseph St.
Sioux Falls, SD 57103
Tel: 605-336-0331
Fax: 605-334-9585

LAYOUT PLAN
RED ROCK MEADOWS PARK
RAPID CITY, SOUTH DAKOTA

Project No.: 04-272
File Name: L1-RedRockMeadows.dwg
Drawn By: JES
Checked By: JLF
Date: 04-16-05
Revisions:

This drawing is to be used only for the project and site identified on this drawing. It is not to be used for any other project or site without the written consent of the designer. The user of this drawing assumes all liability for any errors or omissions. The user of this drawing is advised to verify all dimensions and locations before construction.