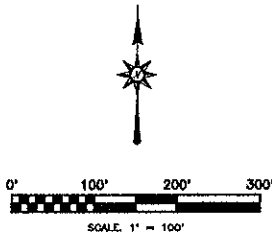


05PL100

PLAT OF RED ROCK MEADOWS SUBDIVISION
 LOTS 1-13, BLOCK 11; LOTS 1, BLOCK 12; LOTS 3-8, BLOCK 7;
 LOTS 3-9, BLOCK 6; LOTS 10-19, BLOCK 5
 LOCATED IN THE NE¹/₄ NE¹/₄ AND THE SE¹/₄ NE¹/₄ OF SECTION 28, T1N, R7E, B.H.M.
 AND THE NW¹/₄ NW¹/₄ AND THE SW¹/₄ NW¹/₄ OF SECTION 29, T1N, R7E, B.H.M.
 CITY OF RAPID CITY, PENNINGTON COUNTY, SOUTH DAKOTA

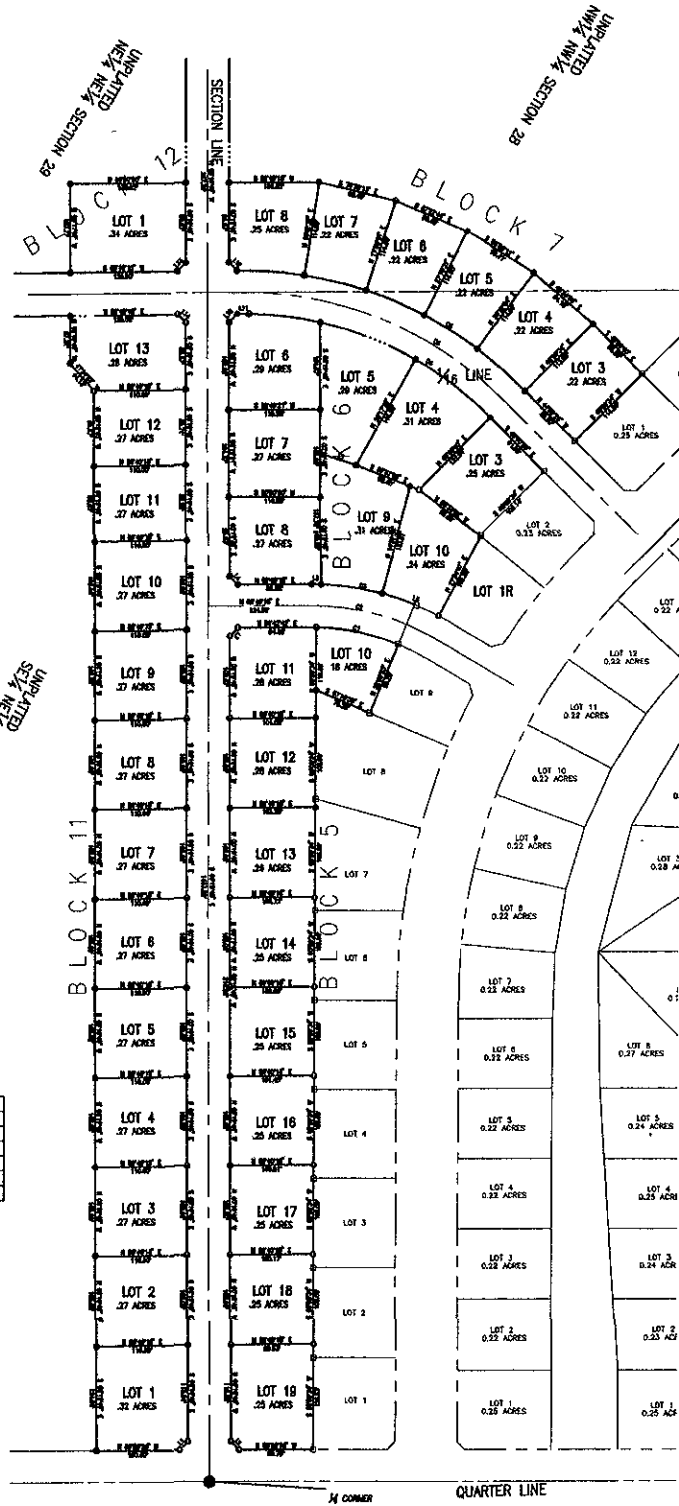


LINE TABLE

NO.	DIRECTION	DIST.
L1	S44°50'24" W	14.10'
L2	N48°09'36" W	14.18'
L3	N44°40'18" E	14.14'
L4	S48°19'45" E	14.14'
L5	S89°21'24" E	11.87'
L6	S67°34'56" E	2.68'
L7	N71°03'17" W	45.58'
L8	N52°28'42" W	50.82'
L9	S50°48'18" E	41.49'
L10	N44°40'18" E	14.14'
L11	N48°09'36" E	14.87'
L12	S48°19'45" E	14.14'
L13	S44°40'18" W	14.14'
L14	S48°19'45" E	14.14'

CURVE TABLE

NO.	RADIUS	DELTA ANGLE	ARC L.	TANGENT	CHORD DIR.	CHORD L.
C1	274.00	21°13'30"	101.50	51.34	N178°26'52" W	100.82
C2	300.00	30°45'44"	161.07	82.63	S74°56'53" E	159.14
C3	328.48	20°21'38"	116.82	58.63	N78°01'21" E	115.41
C4	424.18	14°08'28"	328.83	172.07	S87°02'08" E	318.80
C5	450.00	45°19'45"	358.01	187.91	S67°39'52" E	348.80
C6	478.82	45°50'28"	388.85	208.45	S67°38'08" E	378.89



RECEIVED

MAY 27 2005

**Rapid City Growth
 Management Department**

LEGEND

- DENOTES SET 5/8" REBAR WITH SURVEY CAP MARKED "RCS397"
- DENOTES FOUND SURVEY MONUMENT

NOTES:

1. MINOR DRAINAGE AND UTILITY EASEMENTS ARE HEREBY ESTABLISHED BY WIDE ON THE INTERIOR SIDE OF ALL LOT LINES AND RIGHT-OF-WAY, (EXCEPT WHERE MAJOR DRAINAGE EASEMENTS ARE LOCATED)
2. TOTAL PLATTED AREA: 12.64 ACRES; LOTS: 9.83 ACRES; DEDICATED PUBLIC RIGHT-OF-WAY: 2.81 ACRES.
3. ANY MAJOR DRAINAGE EASEMENTS SHOWN HEREON SHALL BE KEPT FREE OF ALL OBSTRUCTIONS INCLUDING BUT NOT LIMITED TO BUILDINGS, WALLS, FENCES, HEDGES, TREES, AND SHRUBS. THESE EASEMENTS GRANT TO ALL PUBLIC AUTHORITIES THE RIGHT TO CONSTRUCT, OPERATE, MAINTAIN, INSPECT AND REPAIR SUCH IMPROVEMENTS AND STRUCTURES AS IT DEEMS EXPEDIENT TO FACILITATE DRAINAGE FROM ANY SOURCE.
4. NON-ACCESS EASEMENTS ARE HEREBY ESTABLISHED ALONG THE FIRST FIFTY FEET OF CORNER LOTS OR AS INDICATED HEREON.



PREPARED BY:
ARLETH & ASSOCIATES

382 MAIN STREET
 DEADWOOD, SD 57732
 605-678-1637

JOB NO.
 08-0054

DATE: FEBRUARY 2005
SCALE: 1" = 100'
DRAWN:

APPROVED: JMA
 DWG: 08-0054.DWG

PREPARED FOR:
 JENSEN DESIGN INTERNATIONAL, INC.
 528 KANSAS CITY STREET, SUITE 4
 RAPID CITY, SOUTH DAKOTA 57701
 (605) 848-0538