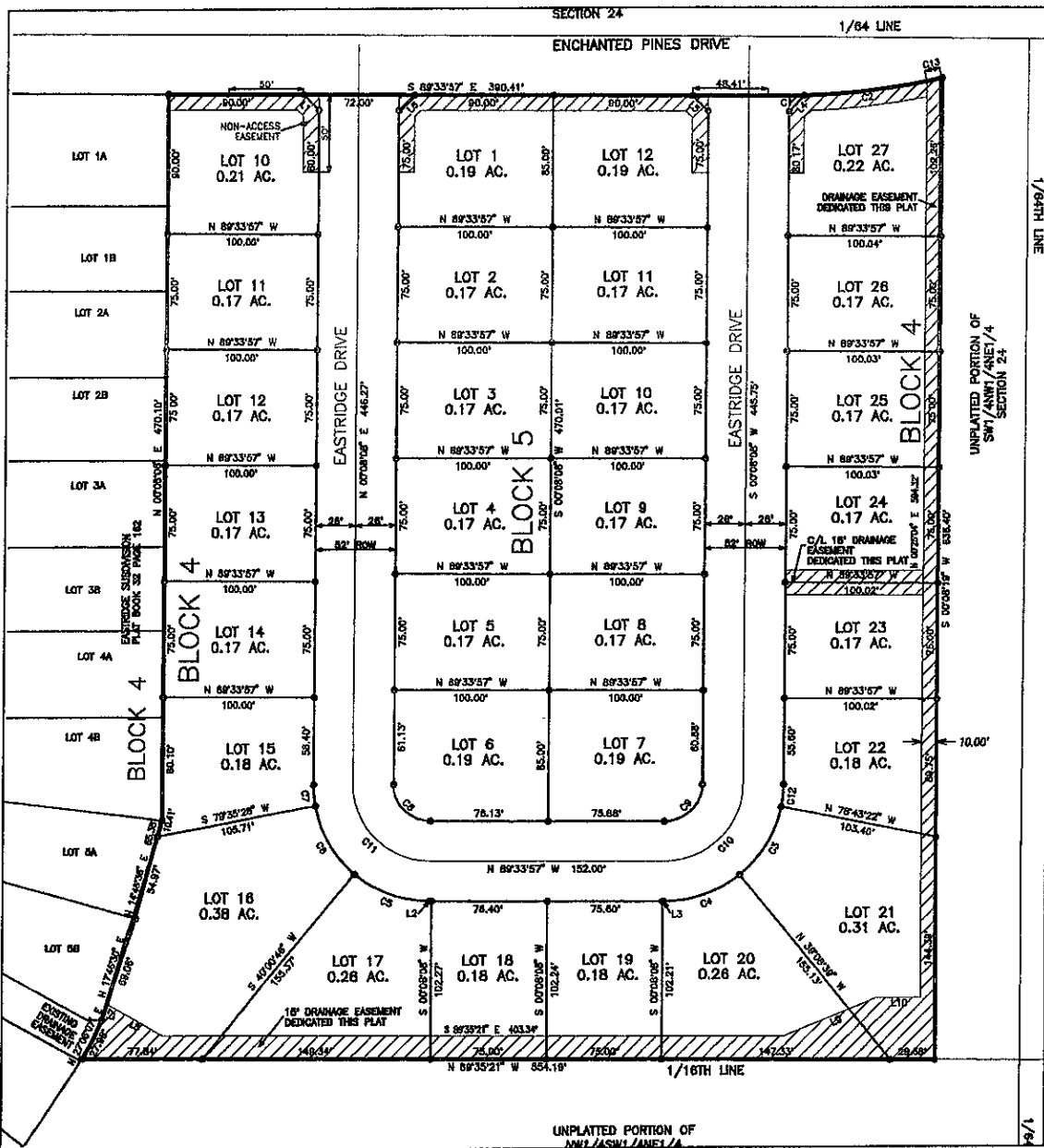
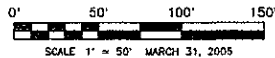


EASTRIDGE ESTATES

LOTS 10 THRU 27 OF BLOCK 4; LOTS 1 THRU 12 OF BLOCK 5 AND DEDICATED STREET,
BEING A PORTION OF THE UNPLATTED PORTION OF THE SW1/4NW1/4NE1/4
LOCATED IN SECTION 24, T1N, R8E, B.H.M.,
PENNINGTON COUNTY, CITY OF RAPID CITY, SOUTH DAKOTA

NOTES:

- Denotes set 5/8" rebar with survey cap marked "ARLETH 3977".
- Denotes Found Survey Monument w/cap as noted.
- ZZZZ Denotes Non-Access Easement per this Plat
- SSSS Denotes Drainage Easement per this Plat



LINE	BEARING	DISTANCE
L1	S 44°48'54" E	13.18'
L2	S 89°23'37" E	13.40'
L3	S 89°33'57" E	0.60'
L4	N 44°17'25" E	14.36'
L5	S 44°48'54" E	14.38'
L6	N 45°17'02" E	14.81'
L7	N 17°41'20" E	10.72'
L8	S 60°00'37" E	40.95'
L9	N 67°58'40" E	35.82'
L10	N 67°58'48" E	8.76'
L11	S 89°33'21" E	12.61'

CURVE	RADIUS	ARC LENGTH	CHORD LEN	CHORD BEARING
G1	532.00'	23.20'	23.69'	N 84°09'40" E
G2	532.00'	60.88'	60.74'	N 83°00'02" E
G3	75.00'	52.50'	51.48'	N 31°03'59" E
C4	75.00'	52.50'	51.48'	N 70°38'42" E
C5	75.00'	52.50'	51.48'	S 69°45'09" E
C6	75.00'	52.50'	51.48'	S 30°11'33" E
G7	75.00'	13.98'	13.97'	S 08°09'12" E
C8	24.00'	37.57'	33.85'	S 44°42'54" E
C9	24.00'	37.82'	34.03'	N 49°17'08" E
C10	60.00'	78.80'	70.89'	N 45°17'08" E
C11	50.00'	78.28'	70.53'	S 44°42'54" E
D12	75.00'	14.78'	14.79'	N 05°42'23" E
D13	632.00'	10.22'	10.21'	N 78°36'30" E

NOTES:

- MAJOR DRAINAGE AND UTILITY EASEMENTS ARE HEREBY ESTABLISHED BY WIRE ON THE INTERIOR SIDE OF ALL LOT LINES AND RIGHT-OF-WAY. (EXCEPT WHERE MAJOR DRAINAGE EASEMENTS ARE LOCATED)
- ANY MAJOR DRAINAGE EASEMENT SHOWN HEREON SHALL BE KEPT FREE OF ALL OBSTRUCTIONS INCLUDING BUT NOT LIMITED TO BUILDINGS, WALLS, FENCES, HEDGES, TREES, AND SHRUBS. THESE EASEMENTS GRANT TO ALL PUBLIC AUTHORITIES THE RIGHT TO CONSTRUCT, OPERATE, MAINTAIN, INSPECT AND REPAIR SUCH IMPROVEMENTS AND STRUCTURES AS IT DEEMS EXPEDIENT TO FACILITATE DRAINAGE FROM ANY SOURCE.
- NON-ACCESS EASEMENTS ARE HEREBY ESTABLISHED ALONG THE FIRST FIFTY FEET OF CORNER LOTS OR AS INDICATED HEREON.
- ALL BUILDERS SHALL MAINTAIN EXISTING DRAINAGE FACILITIES IN ACCORDANCE TO APPROVED CONSTRUCTION PLANS. (RAPID CITY ENG. DIV. REQUESTED NOTE)
- ACREAGE SHOWN ON LOTS INCLUDE EASEMENTS.

RECEIVE

MAY 13 2005

Rapid City Growth

PREPARED BY:
ARLETH & ASSOCIATES

822 MAIN STREET
DEADWOOD, SD 57732
806-578-1837

JOB NO.
05-0374

DATE: 3/31/05
SCALE: 1"=50'
DRAWN: DRAWN BY

APPROVED: JMA
DWG: ARL-PLAT-0374DSN

Prepared for: Department
Dream Design International, Inc.
528 Kansas City Street, Suite 4
Rapid City, SD 57701
605.645.7774 www.dreamdesigninc.com