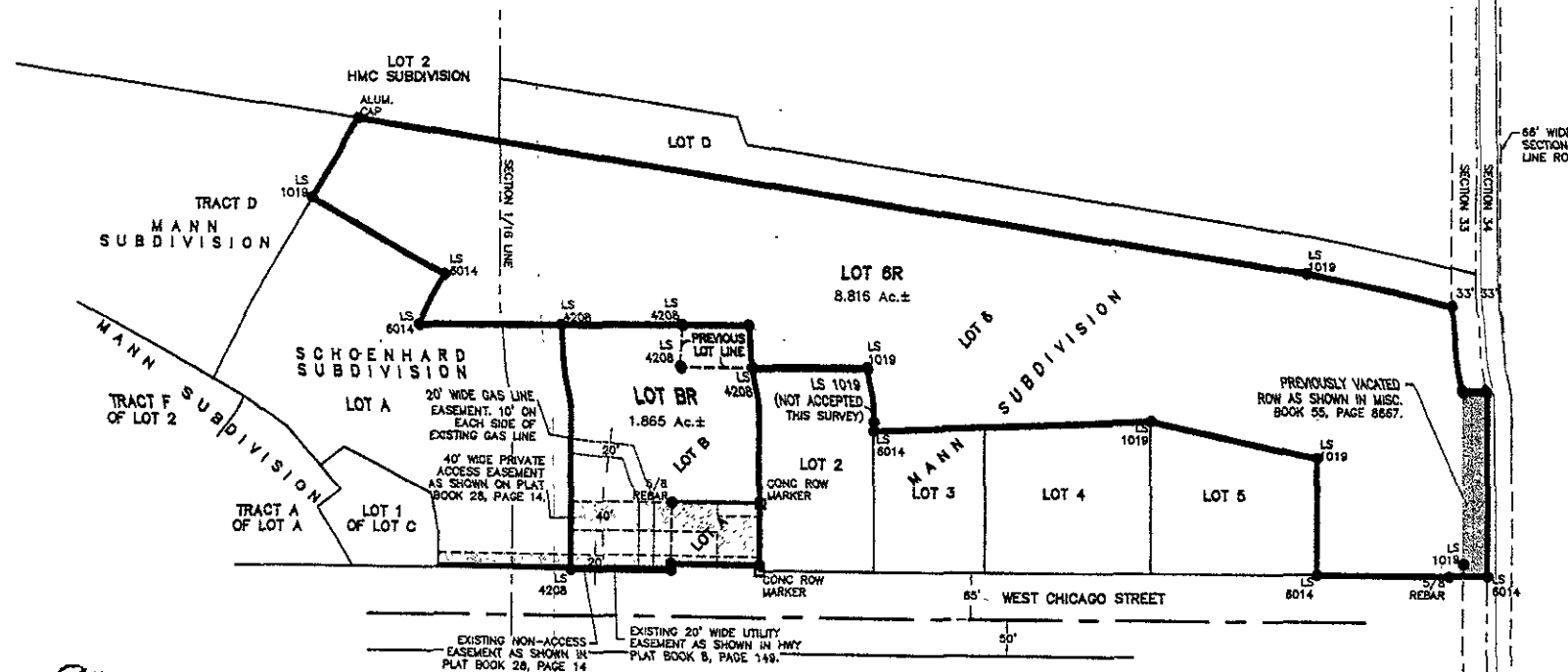


PLAT OF

LOT BR, SCHOENHARD SUBDIVISION LOT 6R, MANN SUBDIVISION

(formerly Lot B of Schoenhard Subdivision, Lot 6 of Mann Subdivision,
a portion of Vacated Section Line Right-of-Way,
and Lot A of NE1/4 of the SE1/4 Section 33)

LOCATED IN THE N1/2 OF SE1/4,
SECTION 33, T2N, R7E, BHM
RAPID CITY, PENNINGTON COUNTY, SOUTH DAKOTA



RECEIVED

FEB 12 2005

Rapid City Growth
Management Department



FEBRUARY 7, 2005
SCALE = N.T.S



Renner Associates, LLC.

616 Sixth St. * Rapid City, SD 57701 * 605/721-7310
FAX: 605/721-7313 * E-MAIL: Gary@RennerAssoc.com
* Spearfish, SD 605/717-0016 *