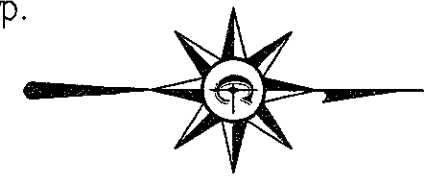
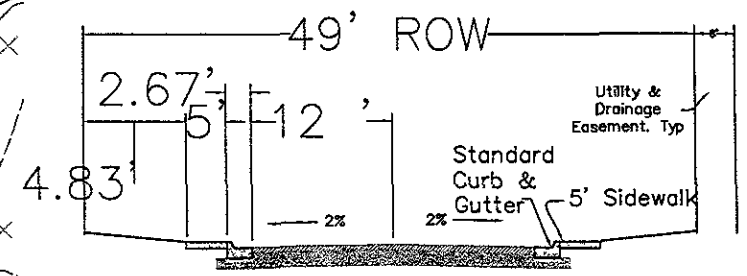


1.5 ac +/- @ 6.7 du/acr
 = 127 Dwelling Units.
 Predominately duplex
 lots proposed. 126 units

Ex. Contour Typ.



Typical Street Section: Not To Scale
 PARK BOTH SIDES

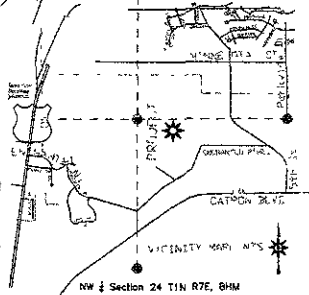


○○○ Pwr., gas, cable, tel. common trench.
 ○ PVC water main.
 ○ PVC sewer main.

**Minnesota Ridge Heights South:
 Phase 1 Design Exception**

Minnesota Ridge Heights South Phase 1 Design Exception

DATE	DESCRIPTION	BY	APP'D
05/02/2011	Phase 1 Design Exception	[Signature]	[Signature]



PLM Development, LLC
 Attn: Paul Truett
 P.O. Box 2624
 Rapid City, SD 57709
 605-331-0125

ALTA VISTA DRIVE

Minnesota Ridge Heights South,
 Phase 1 *Setback Variance Design Exception*

39K 4-29-00