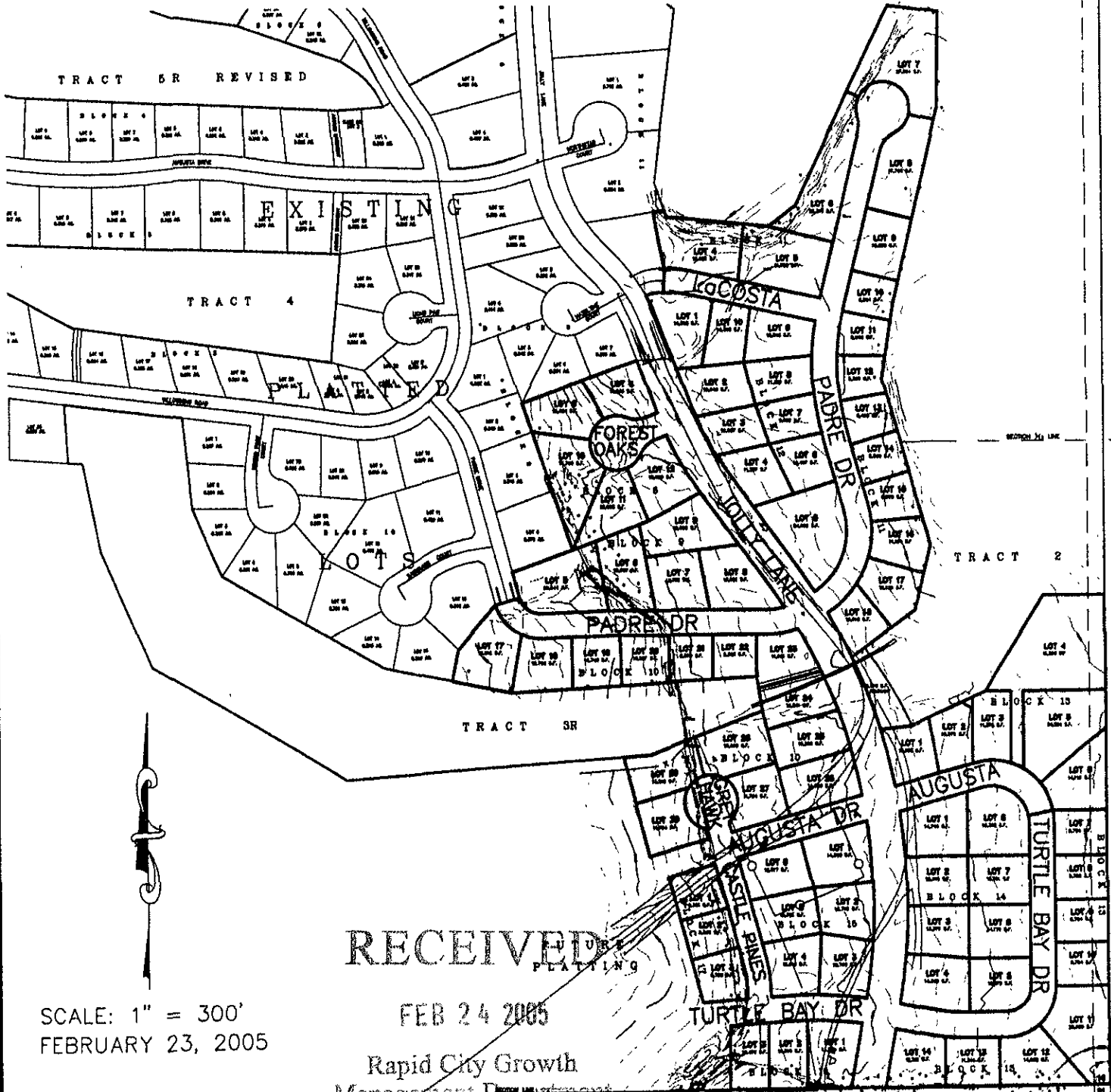


LOTS 8-12 BLK. 8, LOTS 5-9 BLK. 9, LOTS 17-30 BLK. 10,
LOTS 4-18 BLK. 11, LOTS 1-10 BLK. 12, LOTS 1-14 BLK. 13,
LOTS 1-8 BLK. 14, LOTS 1-6 BLK. 15, LOTS 1-3 BLK. 16,
AND LOTS 1-3 BLK. 17 - ELKS COUNTRY ESTATES

LOCATED IN THE SE 1/4
SECTION 16, T1N, R8E, BHM,
RAPID CITY, PENNINGTON COUNTY, SOUTH DAKOTA



RECEIVED
PLATTING

FEB 24 2005

SCALE: 1" = 300'
FEBRUARY 23, 2005

Rapid City Growth

Management Department

SV1260-YR2004\PLAN-05.dwg, 8x11, 2/24/2005 9:33:25 AM