

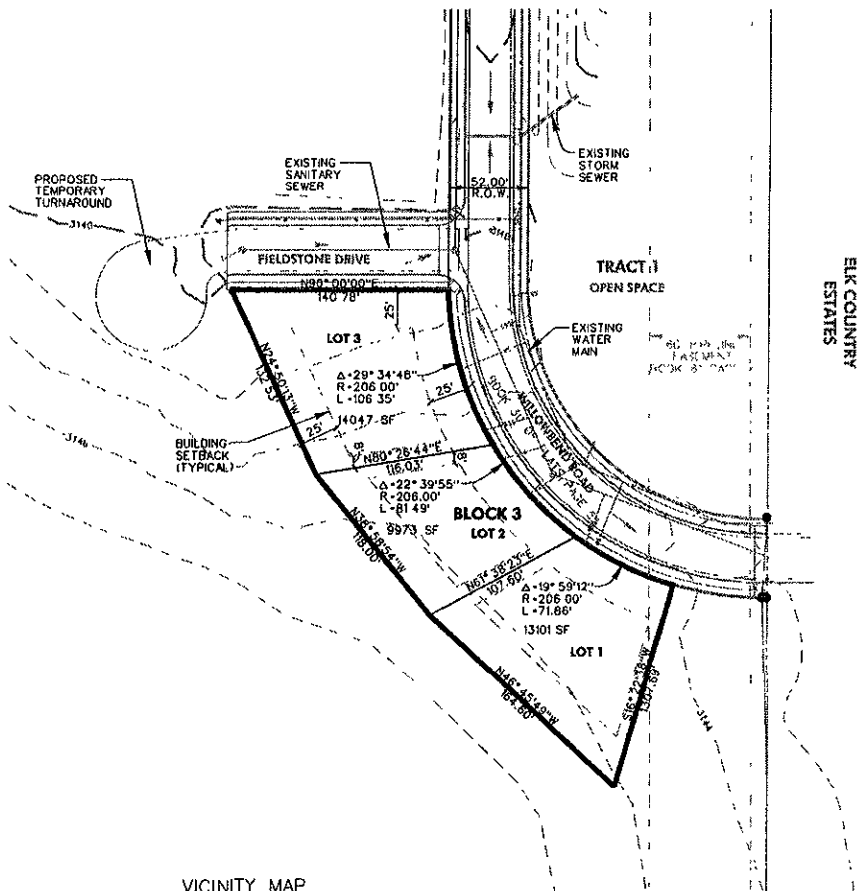
PRELIMINARY PLAT PLUM CREEK SUBDIVISION

05PL077

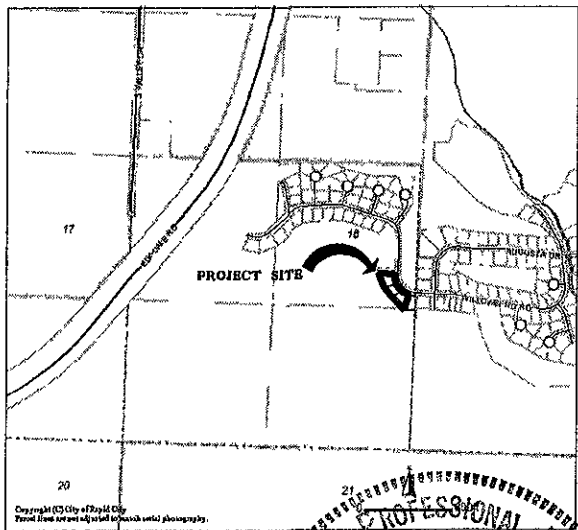
LOTS 1, 2 AND 3 OF BLOCK 3
 LOCATED IN THE NORTHEAST 1/4 OF THE SOUTHWEST 1/4 OF SECTION 16, T1N, R8E

SHEET 1 OF 1

APRIL 29, 2005



VICINITY MAP



RECEIVED

APR 29 2005

Rapid City Growth
 Management Department



50 25 0 50 100
 SCALE 1" = 50'
 2' CONTOUR INTERVAL

NOTES:

- CONTOURS SHOWN ARE FROM RECORD DRAWINGS AND FIELD SURVEYS
- UTILITY AND MINOR DRAINAGE EASEMENTS ON THE INTERIOR OF ALL LOT LINES
- WILLOWBEND ROAD AND FIELDSTONE DRIVE HAVE EXISTING CONCRETE CURB AND GUTTER AND ASPHALT PAVEMENT

REGISTERED PROFESSIONAL ENGINEER
 REG. NO. 2848
 ROBERT A. ROTHERMEL
 R.A. ROTHERMEL
 04/29/2005

Plat prepared by:
 Alliance of Architects and Engineers
 706 West Boulevard
 Rapid City, South Dakota
 Phone: 605 342-9470

