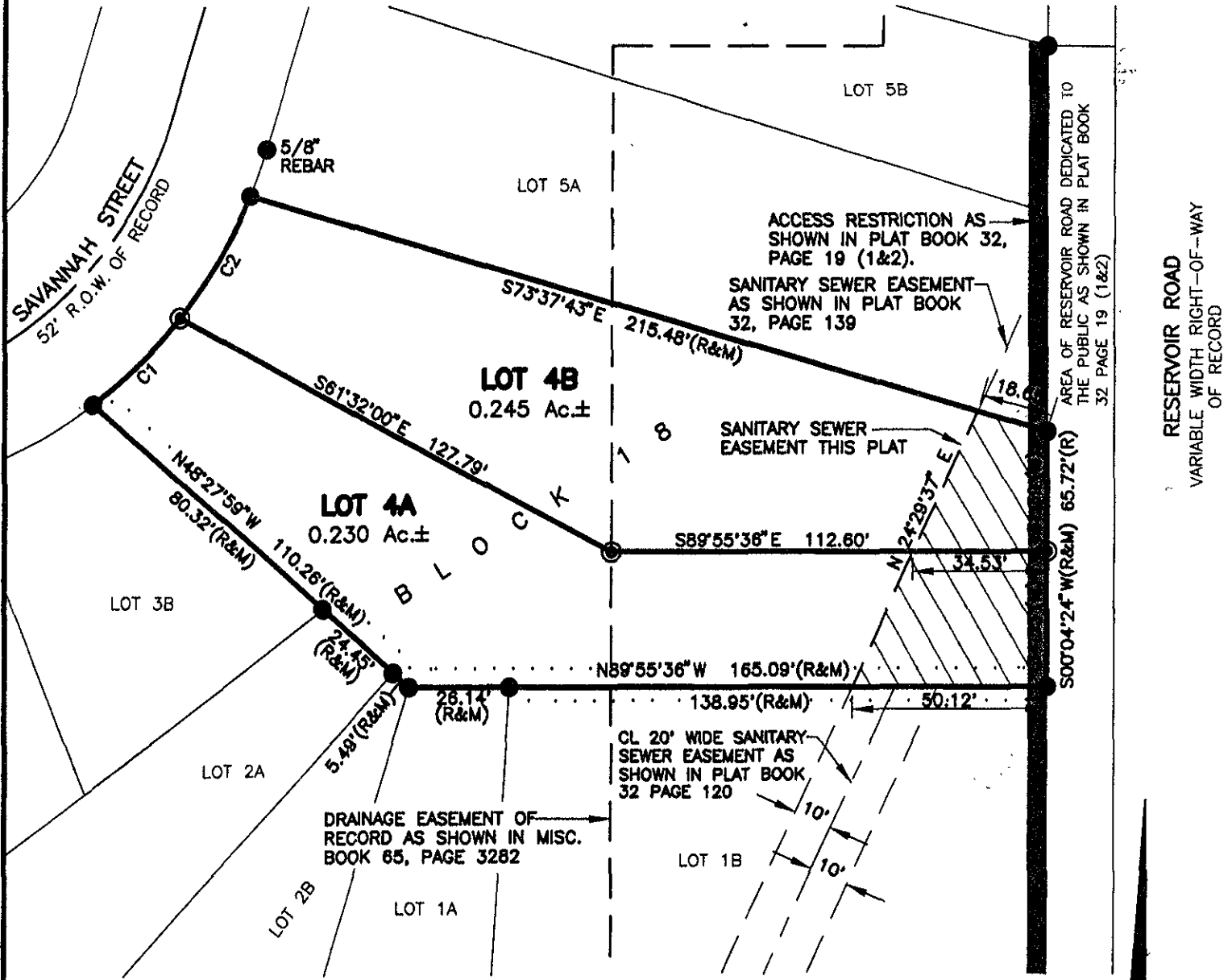


# PLAT OF LOTS 4A AND 4B OF BLOCK 18, TRAILWOOD VILLAGE

(formerly Lot 4 of Block 18, Trailwood Village)  
LOCATED IN THE SE<sup>1</sup>/<sub>4</sub> OF THE SE<sup>1</sup>/<sub>4</sub>,  
SECTION 10, T1N, R8E, B.H.M.,  
PENNINGTON COUNTY, SOUTH DAKOTA



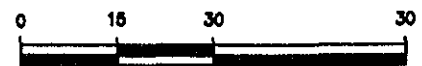
CURVE	LENGTH	RADIUS	DELTA	CHORD BEARING	CHORD DISTANCE
C1	31.76	126.00	14°26'36"	N45°51'20"E	31.88
C2	36.16	126.00	16°26'29"	N30°24'47"E	36.02
C1&C2(R)	67.92	126.00	30°53'05"	N37°38'05"E	67.10

**RECEIVED**

APR 05 2005

APRIL 5, 2005

Rapid City Growth  
Management Department



SCALE 1" = 30'