

RECEIVED

05SV019

JAN 12 2005

PLAT OF

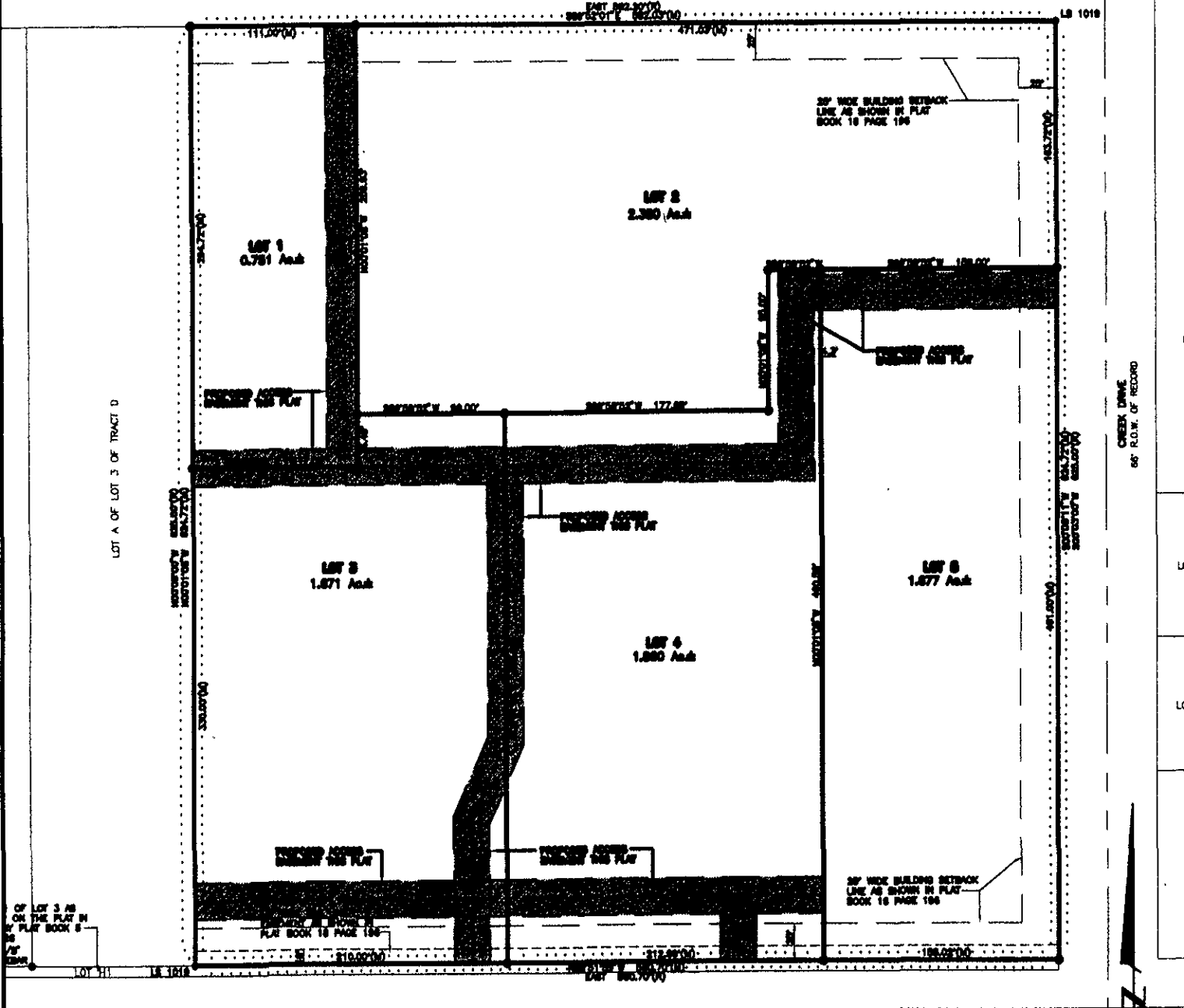
LOTS 1 THROUGH 5
PARK MEADOWS

Rapid City Growth
Management Department

(formerly Lot B of Lot 3 of Tract D)
LOCATED IN THE SW 1/4 OF THE SW 1/4

SECTION 5, T1N, R8E, BHM
RAPID CITY, PENNINGTON COUNTY, SOUTH DAKOTA

EAST ST. CHARLES STREET
60' R.O.W. OF RECORD



EAST ST. PATRICK STREET
80' R.O.W. OF RECORD

JANUARY 5, 2005