

SURVEYOR'S NOTES

Utilities shown are from visual inspection, sketches provided by individual service providers and Utility Locates performed by South Dakota One Call. Ticket Number : 050700178-1915

Bench Mark: Station 2131

LEGEND

- = Sanitary Sewer Manhole (Unless noted)
- = Sanitary Sewer Service Line Cleanout
- = Fire Hydrant
- = Water Valve
- = Curb Stop
- = Utility Pole
- = Area Light
- = Street Light
- = Guy Wire
- = Electric Meter
- = Electric Box
- = Telephone Box
- = Telecommunications Pedestal
- = Natural Gas Meter
- = Sign
- = Mail Box
- = Bolivar
- = Chained Link Fence
- = Underground Electric
- = Overhead Utility Line
- = Underground Telecommunications
- = Sanitary Sewer Line
- = Water Main
- = Natural Gas Line
- = Found Survey Monument as noted
- = Set Rebar with cap marked "RW Fisk 6565"
- = Control Point
- = Handicapped Parking Stall

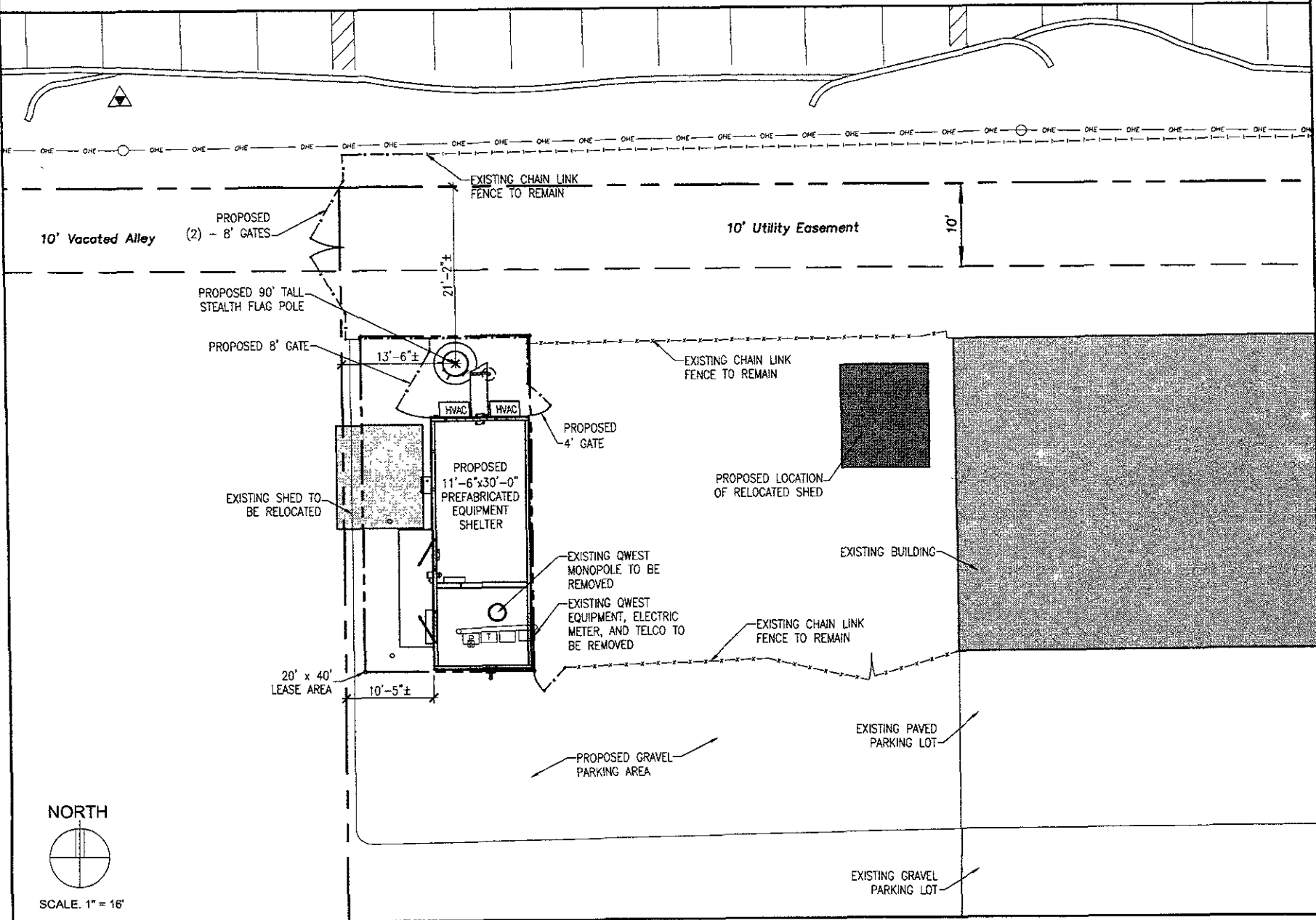
SITE PLAN
 Lots 2, Block 2, Rapps Addition
 All in the NW1/4 of the SE1/4,
 Section 30, T2N, R8E, BHM
 Rapid City, Pennington County, South Dakota

1022 Main Street
 P.O. Box 8154
 Rapid City, South Dakota
 57709
 (605) 348-1538
 (605) 341-1112 (fx)

Fisk Land Surveying
 & Consulting
 Engineers, Inc.

Surveyed by: M.L.D.R.B.L.
 Drawn by: BL
 Checked by: RW/F
 Revisions
 Project No: 05-03-06

SITE PLAN



NORTH



SCALE. 1" = 16'