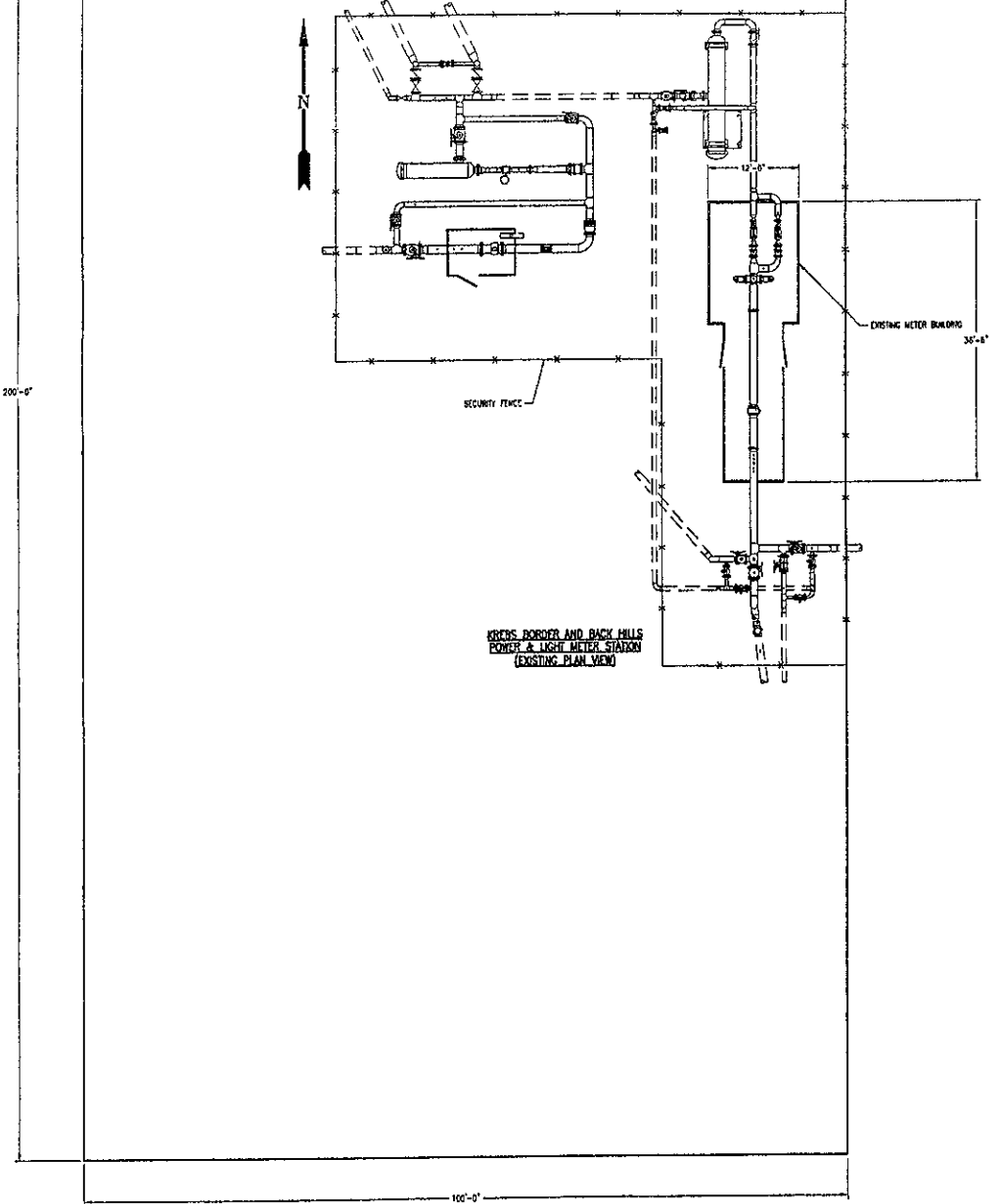
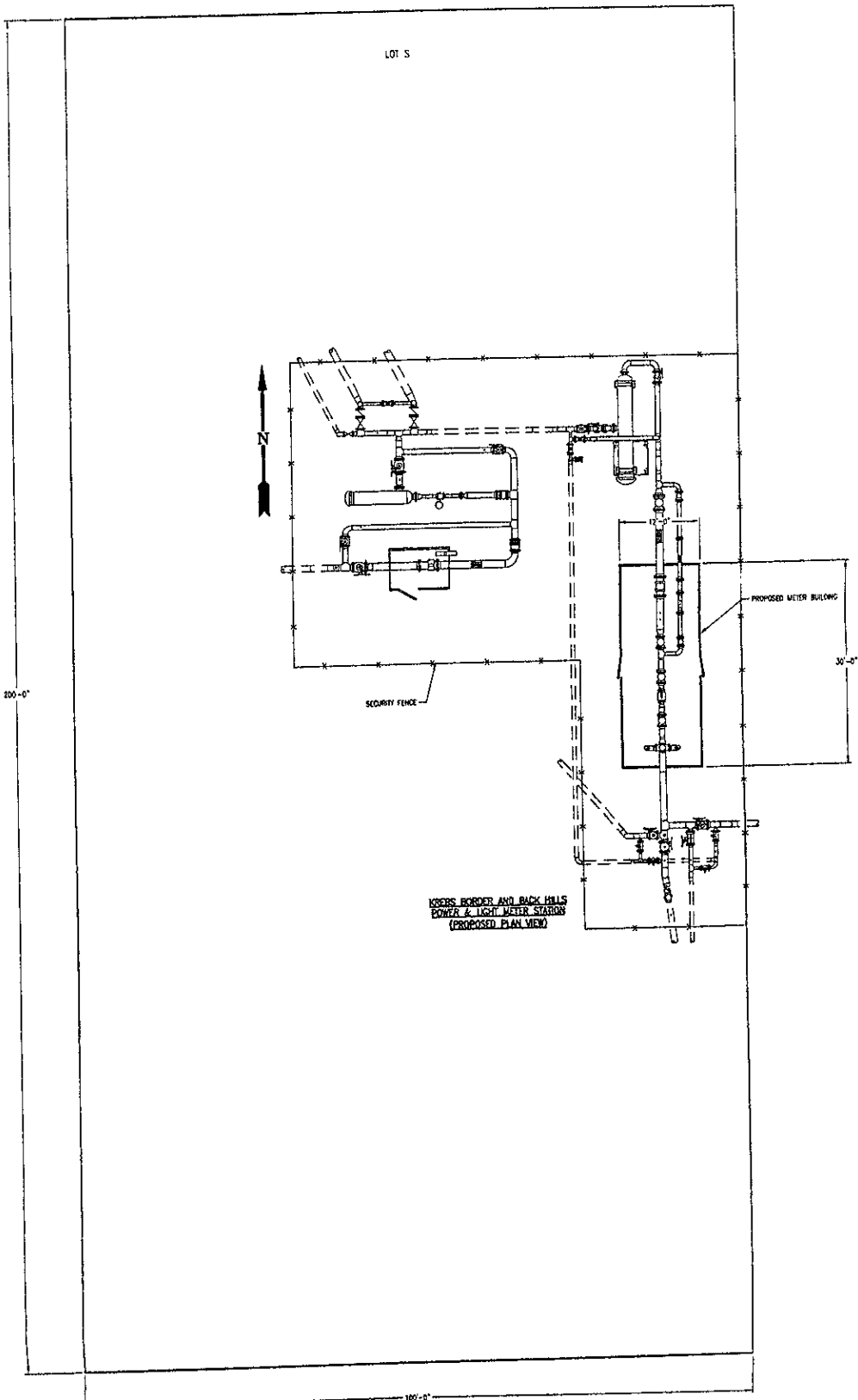


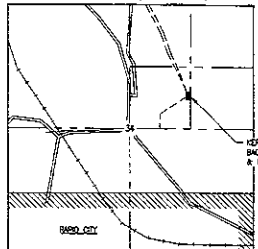
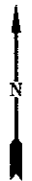
LOT 5



LOT 5

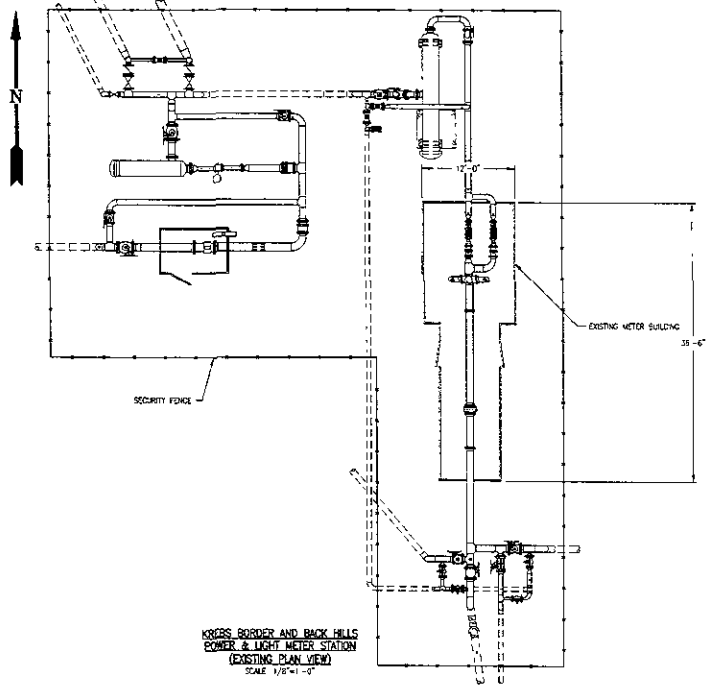


A TRACT LOCATED IN SW 1/4 OF NE 1/4  
SECTION 34, T2N, R7E  
PENNINGTON COUNTY, SOUTH DAKOTA

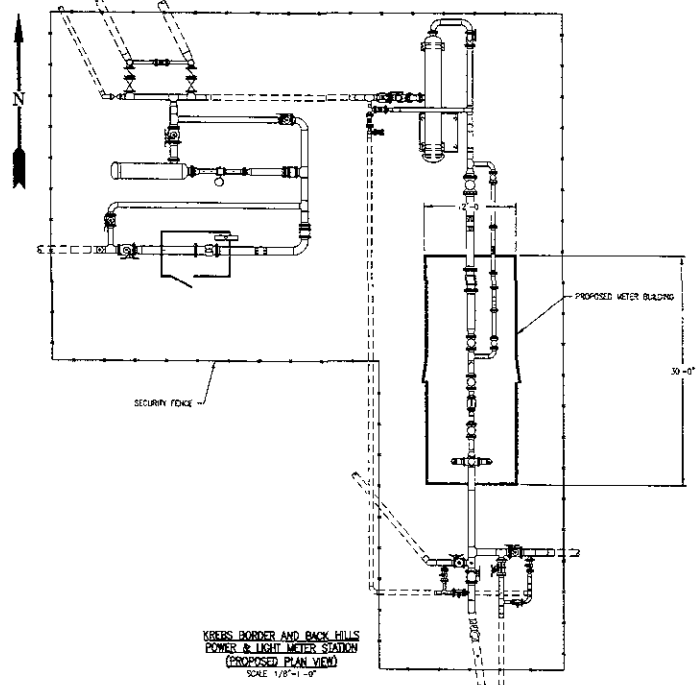


KREBS BORDER AND  
BLACK HILLS POWER  
& LIGHT METER STATION


ORIENTATION PLAN VIEW  
SCALE: 1"=1200'



KREBS BORDER AND BLACK HILLS  
POWER & LIGHT METER STATION  
(EXISTING PLAN VIEW)  
SCALE: 1/8"=1'-0"



KREBS BORDER AND BLACK HILLS  
POWER & LIGHT METER STATION  
(PROPOSED PLAN VIEW)  
SCALE: 1/8"=1'-0"

NO.	DATE	BY	CHECK BY	REVISION		
 <b>WILLISTON BASIN</b> INTERSTATE PIPELINE COMPANY A Subsidiary of MOU Petroleum Group, Inc.						
PROPOSED METER BUILDING KREBS BORDER AND BLACK HILLS POWER & LIGHT METER STATION—RAPID CITY, SD						
DATE	DRAWN BY	DESIGN BY	SCALE	COMP. NO.	DATE NO.	SHEET NO.
2/2/06	OP	ES	AS NOTED	01269	C-10-1229	1 OF 1