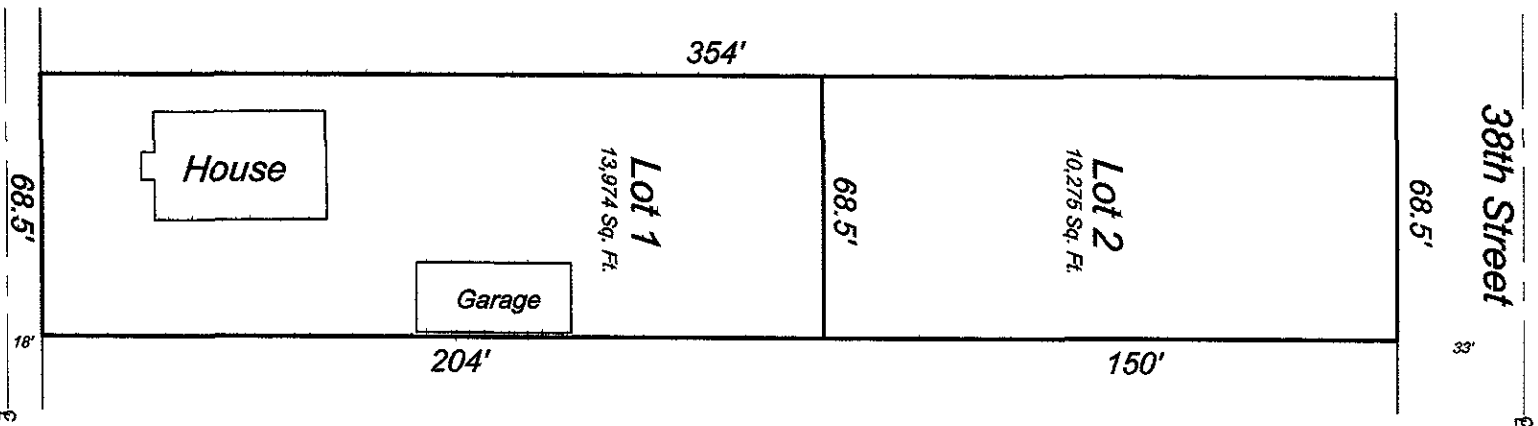
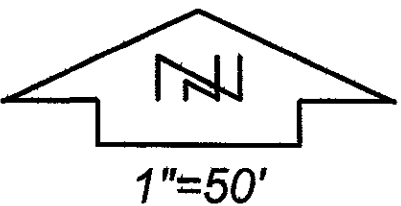


EXHIBIT A

LAYOUT OF LOT 1 AND LOT 2, SALAMUN SUBDIVISION
FORMERLY THE NORTH 68.5 FEET OF LOT H LESS THE EAST 33 FEET, BLOCK 1 OF LOT 3
SCHAMBER TRACT, NE1/4 NW1/4, SECTION 9, T1N, R7E, B.H.M.,
RAPID CITY, PENNINGTON COUNTY, SOUTH DAKOTA



PREPARED BY:
FISK LAND SURVEYING & CONSULTING ENGINEERS, INC.
P.O. BOX 8154, RAPID CITY, SD 57709 (605) 348-1538 March 1, 2005

Elmhurst Drive

68.5'

18'

68.5'

33'

38th Street

354'

68.5'

Lot 2
10,276 Sq. Ft.

150'

Lot 1
13,974 Sq. Ft.

204'

