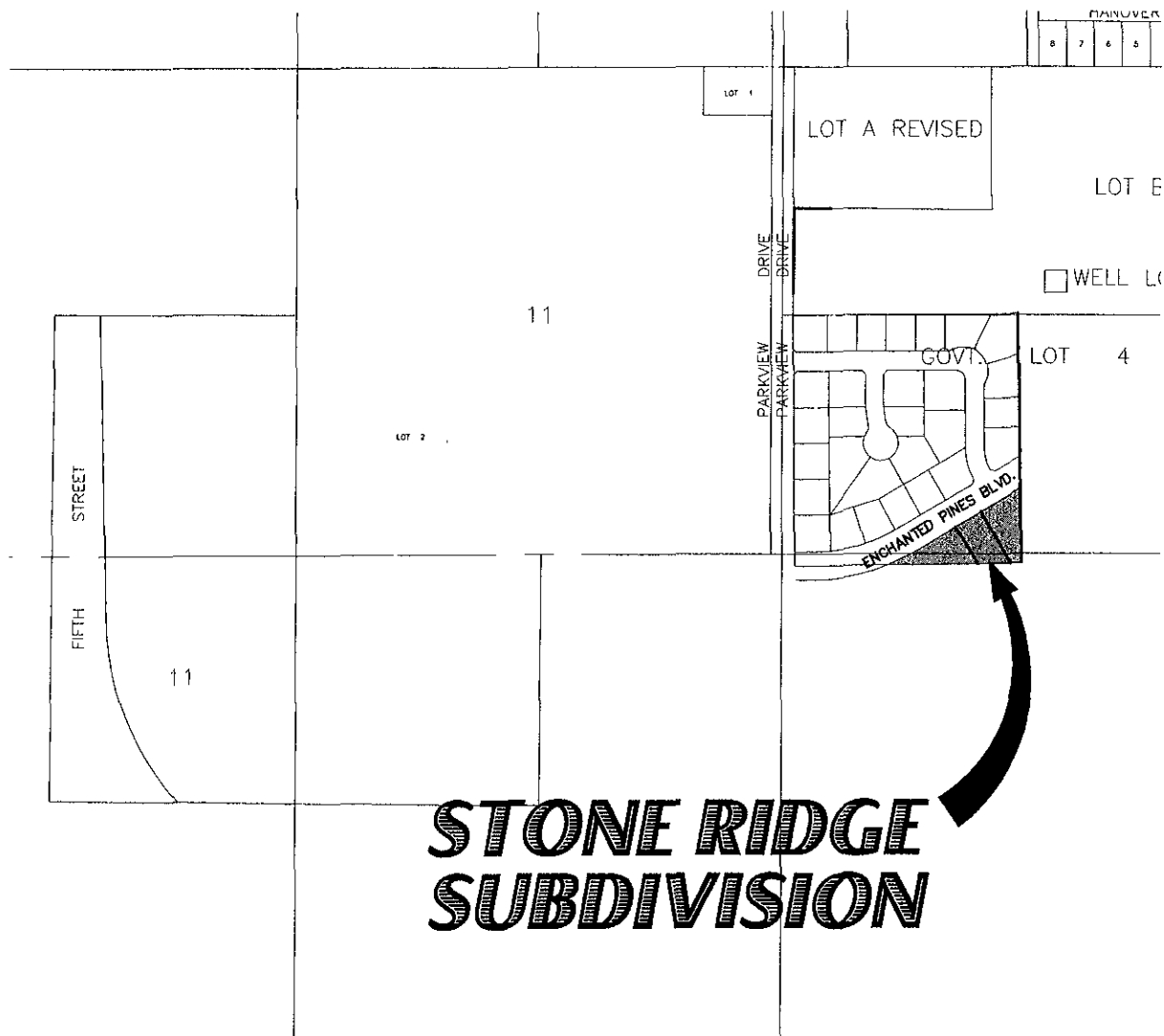


# STONE RIDGE SUBDIVISION

LOCATED IN THE SW1/4SW1/4 SECTION 18,  
T1N, R8E, BHM, PENNINGTON COUNTY,  
CITY OF RAPID CITY, SOUTH DAKOTA



## STONE RIDGE SUBDIVISION

RECEIVED

MAR 11 2005

Rapid City Growth  
Management Department

### STONE RIDGE SUBDIVISION

JOB NO: 03-0024

REV 1:

DATE: 03/2005

REV 2:

DRAWN BY: RDC

REV 3:



**D.D.I.**  
**DREAM DESIGN INTERNATIONAL, INC.**  
 PROFESSIONAL STRUCTURAL & CIVIL ENGINEERING CONSULTANTS  
 626 KANSAS CITY ST., SUITE 4, RAPID CITY, SD 57701  
 PH. 605-346-0530 FAX. 605-346-0545 EMAIL: engineers@dreamdesigninc.com