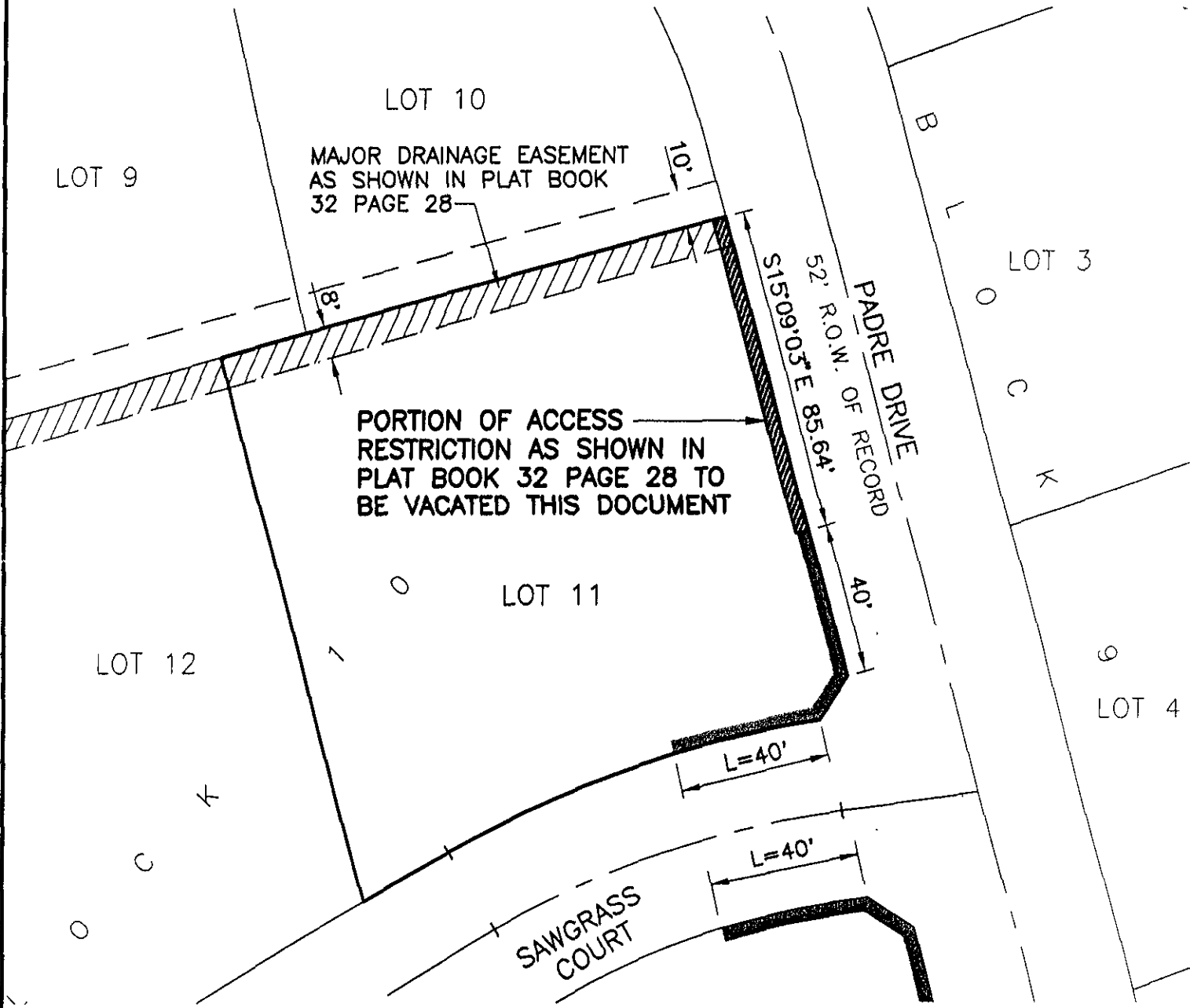


VACATION OF ACCESS RESTRICTION LOT 11 OF BLOCK 10 OF ELKS COUNTRY ESTATES

LOCATED IN THE SE¹/₄,
SECTION 16, T1N, R8E, BHM,
RAPID CITY, PENNINGTON COUNTY, SOUTH DAKOTA

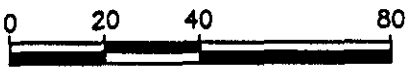


RECEIVED

JAN 26 2005

Rapid City Growth
Management Department

JANUARY 25, 2005



SCALE: 1" = 40'



C:\Drawings\3052\11_ACCESS.DWG 1/25/2005 10:33:12 AM MST