

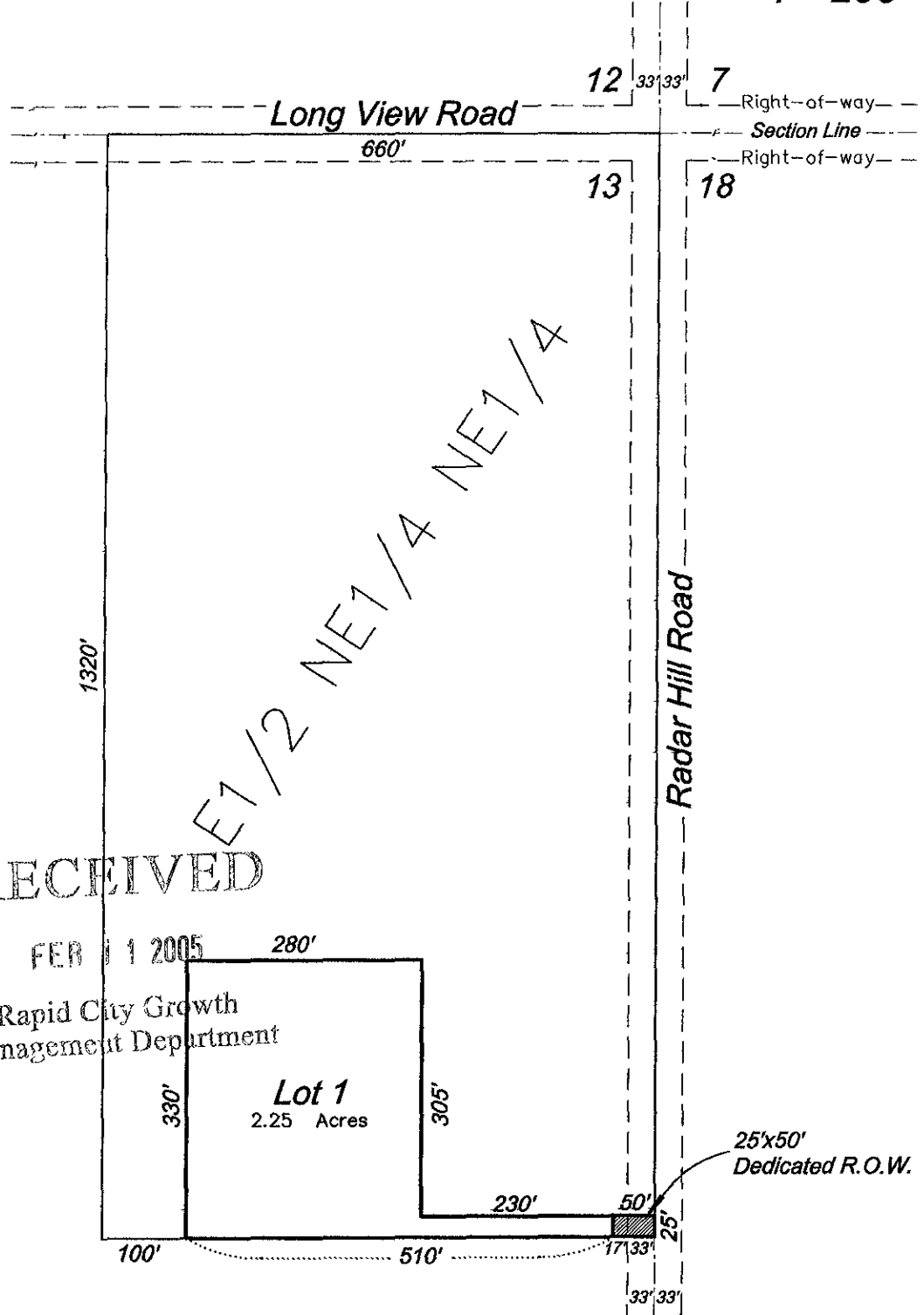
# LAYOUT

05PL030

LOT 1 OF CRYSTAL DOME SUBDIVISION  
AND DEDICATED RIGHT-OF-WAY  
LOCATED IN THE E1/2 NE1/4 NE1/4 SECTION 13, T1N, R8E, BHM  
PENNINGTON COUNTY, SOUTH DAKOTA



1"=200'



RECEIVED  
FEB 11 2005  
Rapid City Growth  
Management Department

PREPARED BY:  
FISK LAND SURVEYING & CONSULTING ENGINEERS, INC.  
P.O. BOX 8154, RAPID CITY, SD 57709 (605) 348-1538 February 7, 2005

NO.