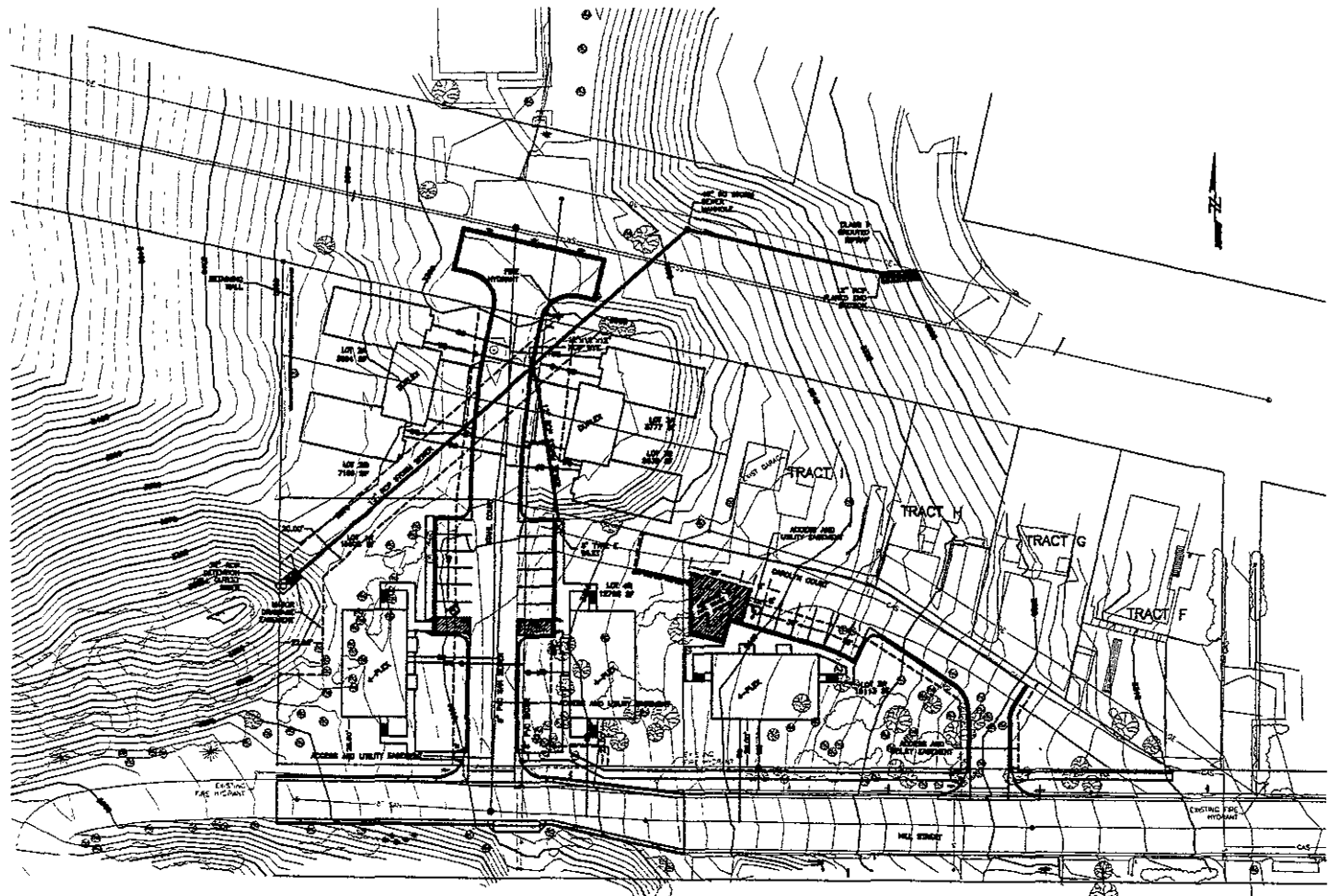
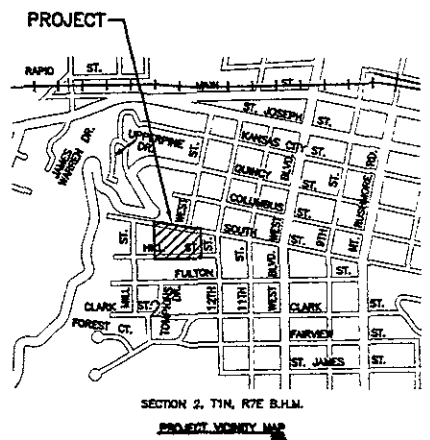


DEVELOPER: RICHARD G. STAHL  
 P.O. BOX 2241  
 RAPID CITY, SD 57708  
 (605) 348-8431



**LEGEND**

— GAS	EXISTING GAS	— 12" P.V.C. WATER MAIN	PROPOSED WATER SERVICE
— 6" W	EXISTING WATER MAIN	— 8" P.V.C. WATER MAIN	PROPOSED WATER MAIN
— 12" W	EXISTING FIRE HYDRANT	— 12" P.V.C. WATER VALVE	PROPOSED WATER VALVE
— 12" W	EXISTING WATER VALVE	— 12" P.V.C. CURB STOP	PROPOSED CURB STOP
— 12" W	EXISTING CURB STOP	— 12" P.V.C. SANITARY SEWER	PROPOSED SANITARY SEWER LINE
— 12" W	EXISTING SANITARY SEWER LINE	— 12" P.V.C. SANITARY SEWER	PROPOSED SANITARY SEWER SERVICE LINE
— 12" W	EXISTING MANHOLE	— 12" P.V.C. SANITARY SEWER	PROPOSED MANHOLE
— 12" W	EXISTING OVERHEAD ELECTRIC	— 12" P.V.C. SANITARY SEWER	PROPOSED MANHOLE
— 12" W	EXISTING UTILITY POLE	— 12" P.V.C. SANITARY SEWER	PROPOSED MANHOLE
— 12" W	EXISTING LIGHT POLE	— 12" P.V.C. SANITARY SEWER	PROPOSED MANHOLE
— 12" W	WALKWAY	— 12" P.V.C. SANITARY SEWER	PROPOSED MANHOLE
— 12" W	ROCK WALL	— 12" P.V.C. SANITARY SEWER	PROPOSED MANHOLE
— 12" W	DECIDUOUS TREE	— 12" P.V.C. SANITARY SEWER	PROPOSED MANHOLE
— 12" W	DECIDUOUS BUSH	— 12" P.V.C. SANITARY SEWER	PROPOSED MANHOLE
— 12" W	CONIFER TREE	— 12" P.V.C. SANITARY SEWER	PROPOSED MANHOLE
— 12" W	TREE CLUMP	— 12" P.V.C. SANITARY SEWER	PROPOSED MANHOLE



**RECEIVED**  
 FEB - 9 2005  
 Rapid City Growth  
 Management Department

DATE: 02-07-05  
 SCALE: 1"=30' N.P.S.  
 DRAWN: C.F.  
 CHECKED: B.F.  
 PROJECT NO: J01-102  
 SHEET NO: 1/4

**Ferber Engineering, Inc.**  
 1500 W. 10th St., Rapid City, SD 57701  
 (605) 348-8431

FINAL DEVELOPMENT PLAN  
 STAHL VICTORIAN ADDITION  
 RAPID CITY, PENNINGTON COUNTY, SOUTH DAKOTA