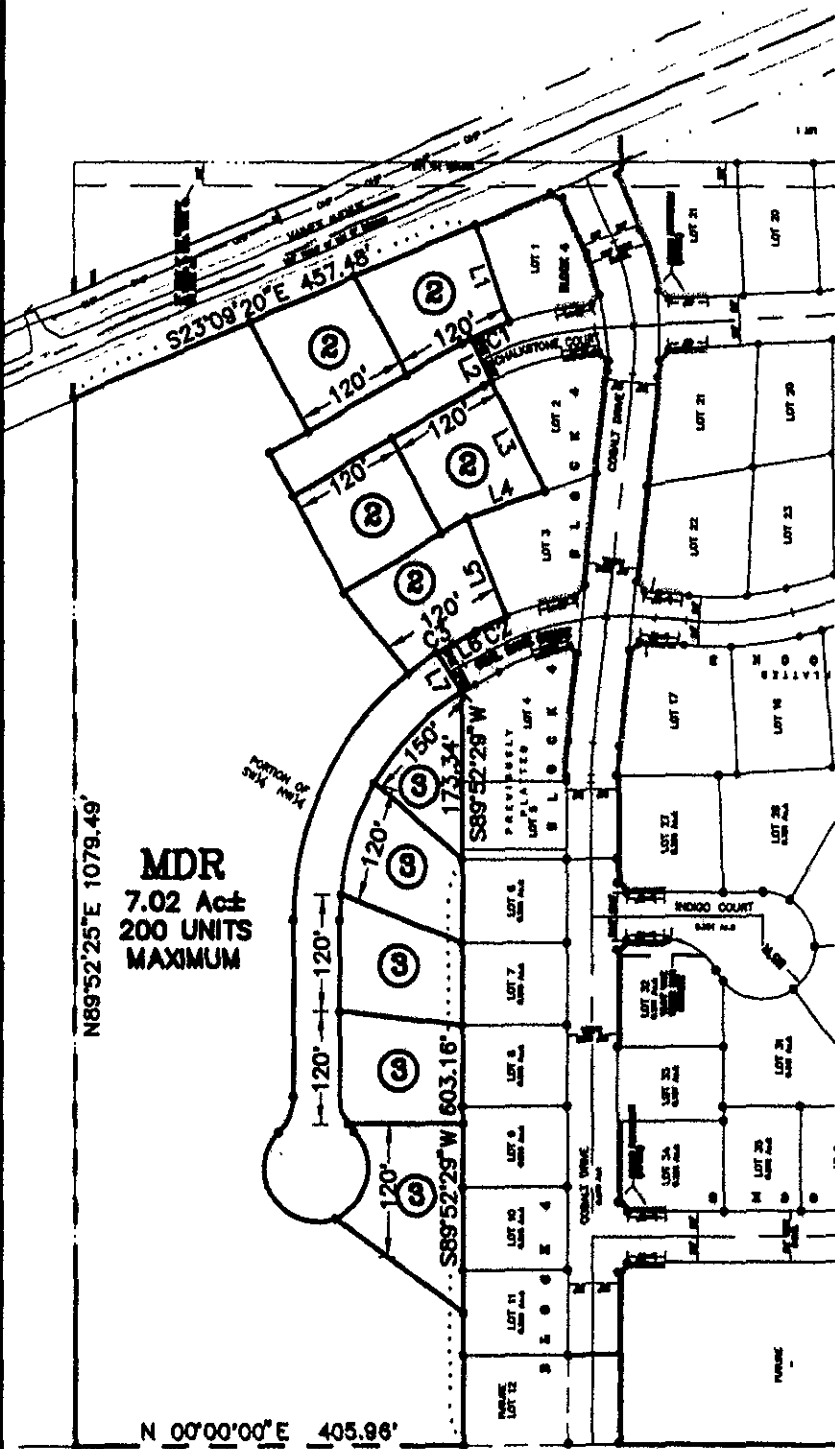


EXHIBIT 'A' MDR - AUBURN HILLS SUBDIVISION

(formerly a portion of the SW $\frac{1}{4}$ of the NW $\frac{1}{4}$)
 LOCATED IN THE SW $\frac{1}{4}$ OF THE NW $\frac{1}{4}$,
 SECTION 13, T2N, R7E, BHM,
 RAPID CITY, PENNINGTON COUNTY, SOUTH DAKOTA



JANUARY 26, 2005

 SCALE: 1" = 200'

RECEIVED

JAN 28 2005
 Rapid City Growth
 Management Department

LINE	LENGTH	BEARING
L1	108.45	S70°51'20"W
L2	49.00	S63°07'01"W
L3	124.45	S63°07'01"W
L4	86.55	N18°05'54"W
L5	110.00	S67°34'38"W
L6	28.82	N28°36'09"W
L7	49.00	S57°59'43"W

CURVE	LENGTH	RADIUS	DELTA	CHORD BEARING	CHORD DISTANCE
C1	43.83	324.50	07°44'19"	N23°00'50"W	43.79
C2	35.00	324.50	06°10'47"	N25°30'46"W	34.98
C3	19.27	324.50	03°24'07"	N49°39'37"W	19.26

C:\Drawings\1851\MDR-NW.dwg 1/26/2005 3:45:31 PM MST
 DMM