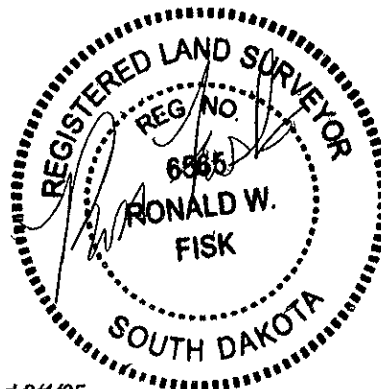
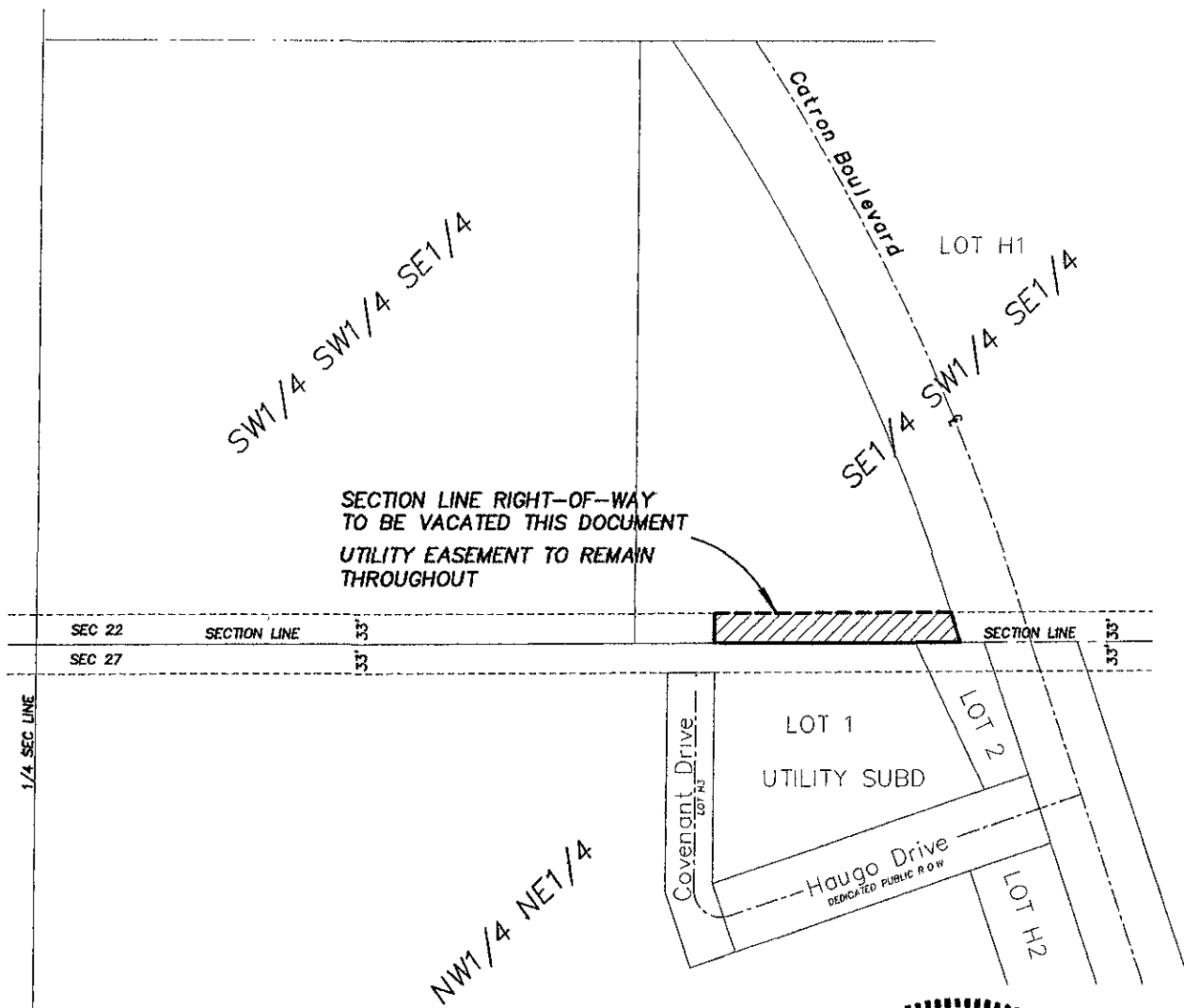
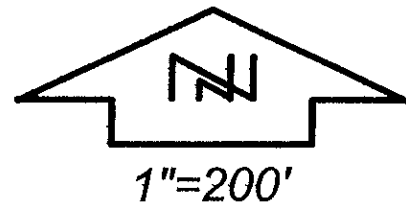


# EXHIBIT A

04VR013

VACATION OF SECTION LINE RIGHT-OF-WAY  
LOCATED IN THE SE1/4 SW1/4 SE1/4, LESS LOT H1  
SECTION 22, T1N, R7E, B.H.M.,  
RAPID CITY, PENNINGTON COUNTY, SOUTH DAKOTA



PREPARED BY:

FISK LAND SURVEYING & CONSULTING ENGINEERS, INC.

P.O. BOX 8154, RAPID CITY, SD 57709 (605) 348-1538 December 9, 2004 Revised 3/1/05

NO. 04-11-02