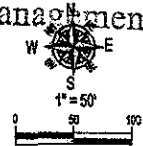


DEC 10 2004

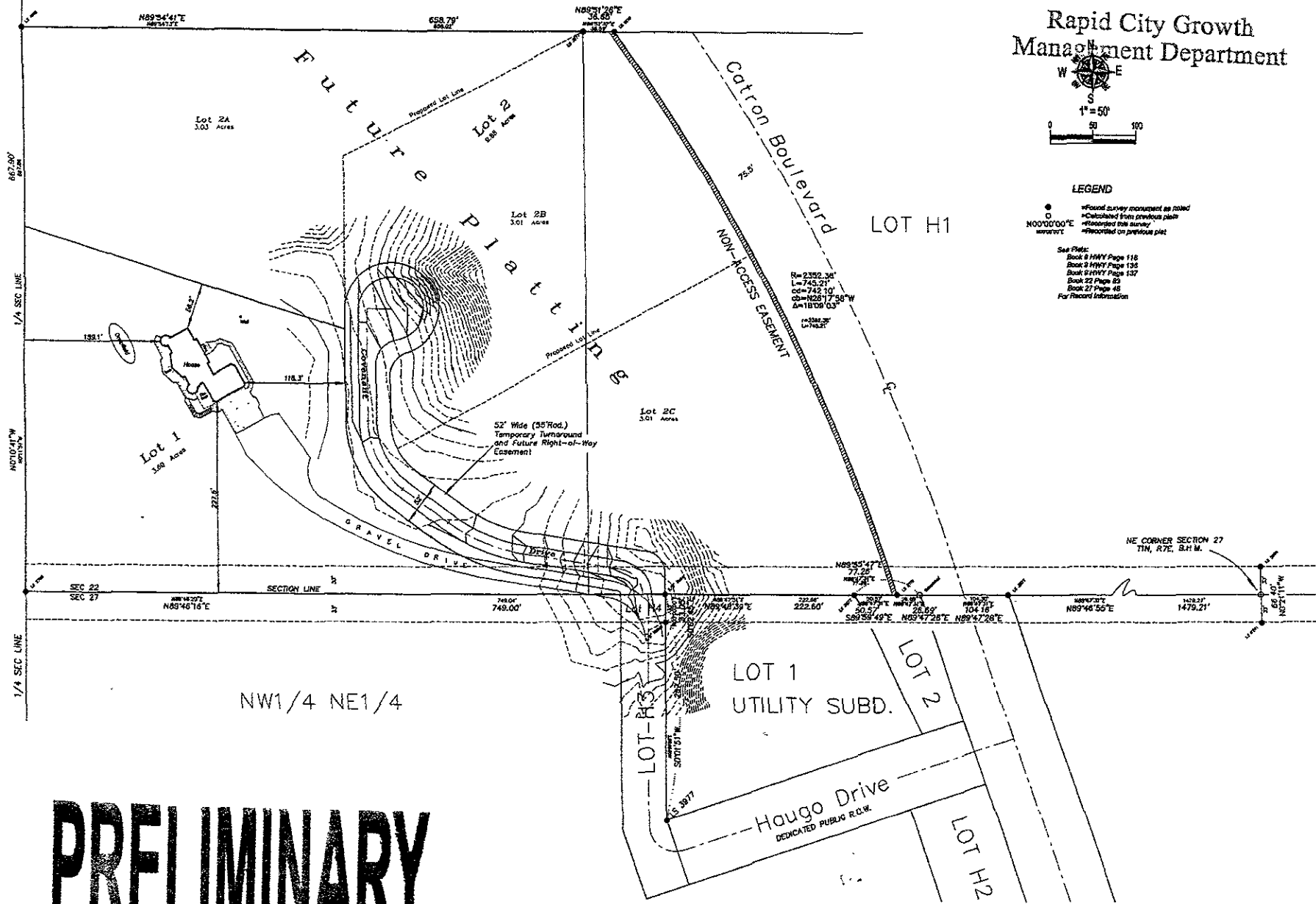
Rapid City Growth Management Department



LEGEND

- Found survey monument as noted
- Calculated from previous plat
- Replotted from survey
- Replotted on previous plat

See Plat:  
 Book 8 HWY Page 118  
 Book 8 HWY Page 130  
 Book 21 HWY Page 137  
 Book 22 Page 63  
 Book 27 Page 46  
 For Record Information



Boundary Survey and Development Layout  
 SW1/4 SW1/4 SE1/4 and  
 SE1/4 SW1/4 SE1/4 less Lot H1  
 Section 22, T1N, R7E, B.H.M.,  
 Rapid City, Pennington County, South Dakota

1322 Main Street  
 P.O. Box 879  
 Rapid City, S.D. 57709  
 (605) 442-1535  
 (800) 442-1112 (CO)

Fisk Land Surveying  
 & Consulting  
 Engineers, Inc.



Date: 11/18/04  
 Surveyed by: M/R  
 Drawn by: G/RWF  
 Checked by: J/W  
 Revisions: 11/18/04

Project No. 04-11-02

PRELIMINARY