

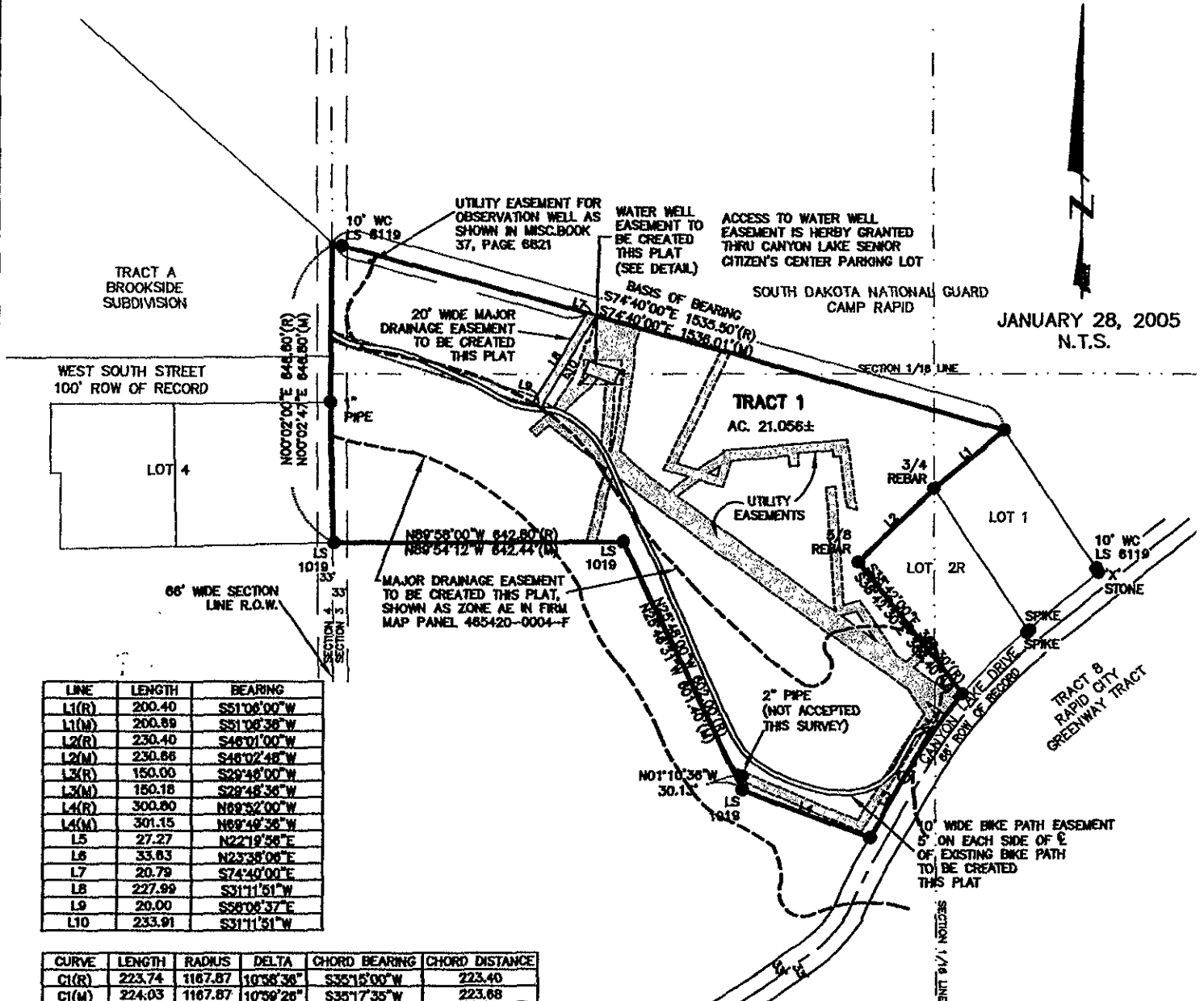
PLAT OF
TRACT 1

CANYON LAKE SENIOR CITIZENS CENTER

(formerly a portion of the NW1/4 Section 3.)

LOCATED IN THE NW 1/4
SECTION 3, T1N, R7E, BHM

RAPID CITY, PENNINGTON COUNTY, SOUTH DAKOTA



JANUARY 28, 2005
N.T.S.

LINE	LENGTH	BEARING
L1(R)	200.40	S51°06'00"W
L1(M)	200.89	S51°06'38"W
L2(R)	230.40	S46°01'00"W
L2(M)	230.86	S46°02'48"W
L3(R)	150.00	S29°48'00"W
L3(M)	150.18	S29°48'34"W
L4(R)	300.80	N69°32'00"W
L4(M)	301.15	N69°49'38"W
L5	27.27	N22°19'38"E
L6	33.83	N23°38'06"E
L7	20.79	S74°40'00"E
L8	227.99	S31°11'51"W
L9	20.00	S58°06'37"E
L10	233.91	S31°11'51"W

CURVE	LENGTH	RADIUS	DELTA	CHORD BEARING	CHORD DISTANCE
C1(R)	223.74	1167.87	10°58'38"	S35°15'00"W	223.40
C1(M)	224.03	1167.87	10°59'26"	S35°17'35"W	223.68

RECEIVED

JAN 27 2005

Renner Associates, LLC.

616 Sixth St. * Rapid City, SD 57701 * 605/721-7310
FAX: 605/721-7313 * E-MAIL: Gary@RennerAssoc.com
* Spearfish 605/717-0016 *

Rapid City Growth
Management Department



CITY HALL 1903

S:\P\009\Drawings\2005\CanyonSenior\Plat.dwg, 8X11, 1/28/2005 7:46:02 AM