

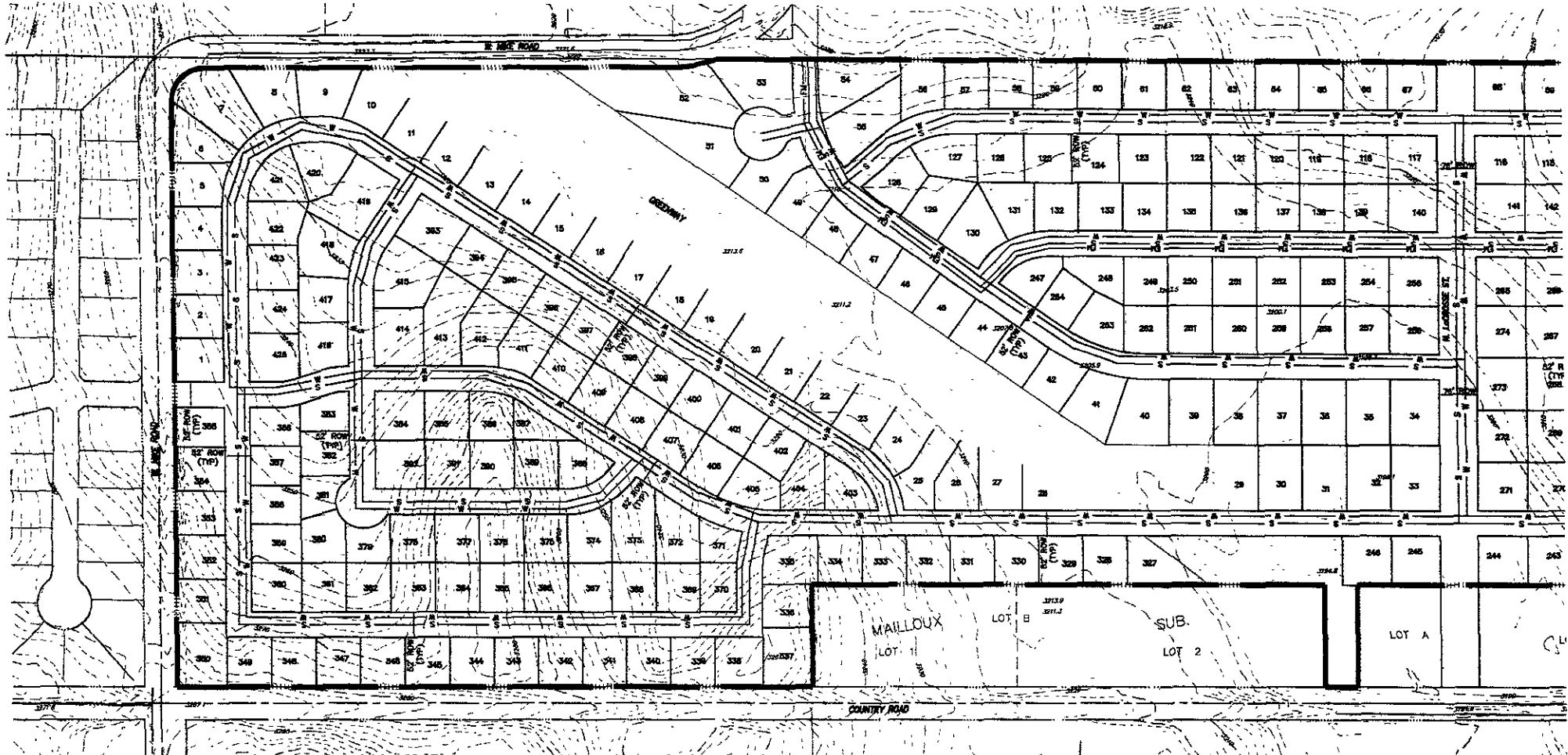
RECEIVED

JAN 28 2005

Rapid City Growth Management Department

FREELAND MEADOWS SUBDIVISION

GOVERNMENT LOT 4 LESS ROW, THE UNPLATTED PORTION OF SE1/4SW1/4, AND THE UNPLATTED PORTION OF S1/2SE1/4, ALL IN SECTION 18, TOWNSHIP 2 NORTH, RANGE 8 EAST, BLACK HILLS MERIDIAN, PENNINGTON COUNTY, SOUTH DAKOTA



DEVELOPMENT INFORMATION

SUBMITTAL: LAYOUT PLAT

SUBDIVISION: FREELAND MEADOWS

CURRENT OWNER: SPF PROPERTIES AND K&F PROPERTIES
22428 PIONEER TRAIL
RAPID CITY, SD 57701

DEVELOPMENT ENGINEER: DREAM DESIGN INTERNATIONAL, INC.

EXISTING ZONING: GENERAL AGRICULTURE

PROPOSED ZONING: LOW DENSITY RESIDENTIAL

TOTAL SITE AREA: 148.8 ACRES

LOW DENSITY RESIDENTIAL AREA

TOTAL RESIDENTIAL AREA: 148.8 ACRES

TOTAL YIELD: 425 LOTS

GROSS DENSITY: 2.9 LOTS PER ACRE

RIGHT-OF-WAY AREA: 30.9 ACRES

AVERAGE LOT SIZE: 0.24 ACRES

MINIMUM LOT SIZE: 0.18 ACRES

LAND USE: LOW DENSITY RESIDENTIAL

SITE DATA

ELEVATION RANGE: 3166 TO 3288

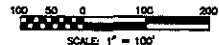
WATER SYSTEM: CITY OF RAPID CITY

STATIC WATER EL: 3350

SANITARY SEWER SYSTEM: CITY OF RAPID CITY

PRO LIFT STATION EL: 3166

PROJECT: FREELAND MEADOWS SUBDIVISION
PROJECT NO: 05-0368
DATE: JANUARY 28, 2005
SHEET 1 OF 2



D.D.I.
DREAM DESIGN INTERNATIONAL, INC.
PROFESSIONAL STRUCTURAL & CIVIL ENGINEERING CONSULTANTS
608 BARRAS CITY ST., SUITE 4, RAPID CITY, SD 57701
PH: 605-345-0856 FAX: 605-345-8545 EMAIL: mj@dreamdesigninc.com

FREELAND MEADOWS SUBDIVISION

GOVERNMENT LOT 4 LESS ROW, THE UNPLATTED PORTION OF SE1/4SW1/4, AND THE UNPLATTED PORTION OF S1/2SE1/4,
ALL IN SECTION 18, TOWNSHIP 2 NORTH, RANGE 8 EAST, BLACK HILLS MERIDIAN,
PENNINGTON COUNTY, SOUTH DAKOTA

