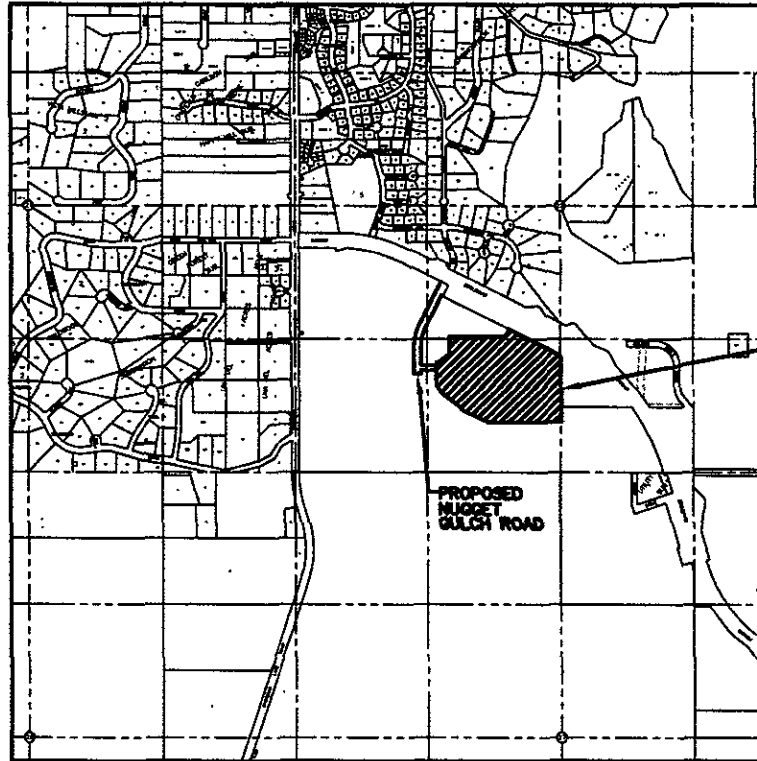


INITIAL PLANNED DEVELOPMENT

STONEY CREEK APARTMENTS BELGARDE ENTERPRISES RAPID CITY, SD



PROJECT ADDRESS
1000 S. GARDNER
RAPID CITY, SD 57102

PROJECT SITE

LIST OF SHEETS

- 1. TITLE SHEET
- 2. CONCEPTUAL LAYOUT AND NOTES
- 3. EXISTING CURBS AND CONCEPTUAL GRADING

FMG, Inc.
3700 8th Street
Rapid City, SD 57102
(605) 342-4100 FAX (605) 342-4223
www.fmginc.com

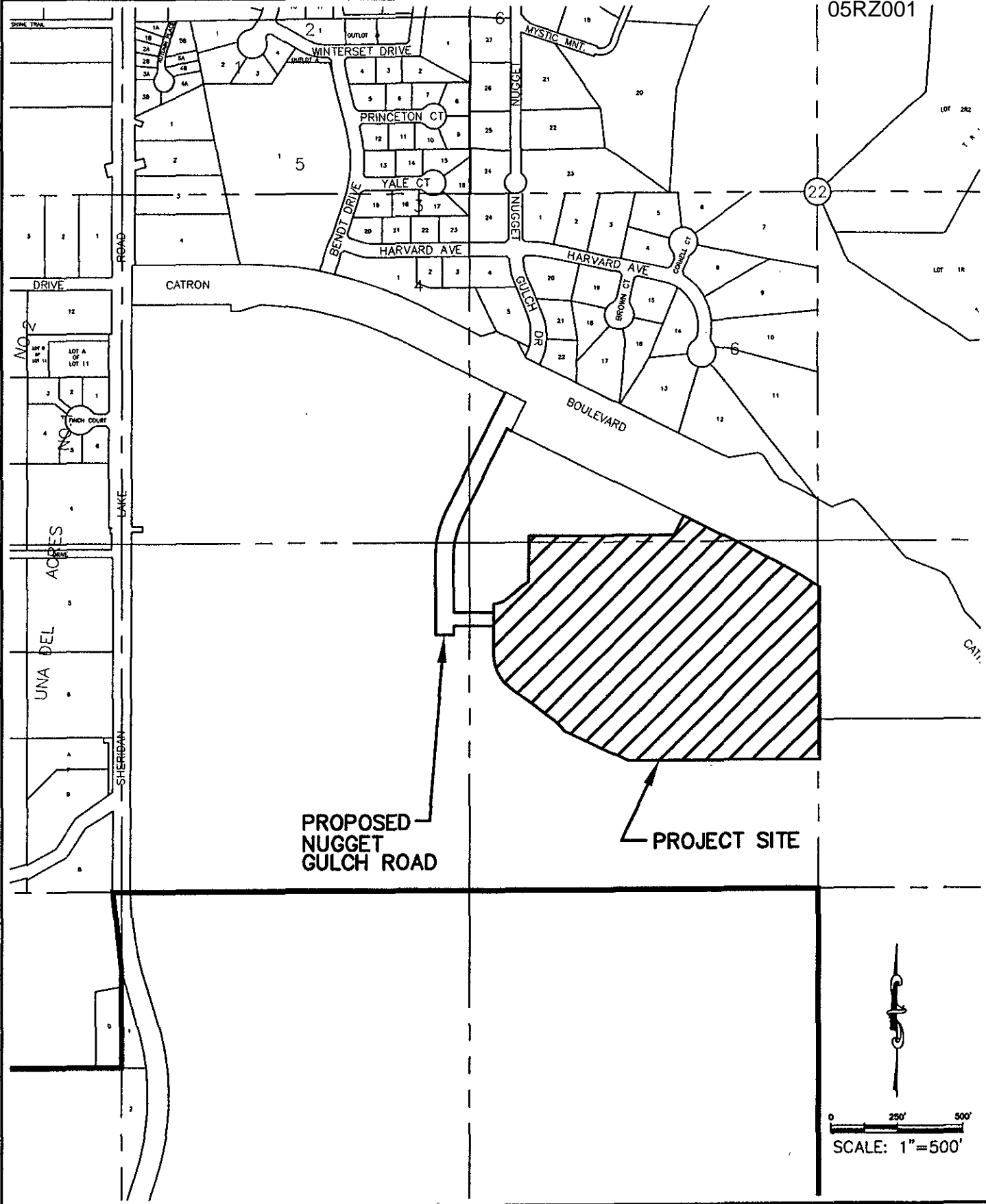


Project Number	05RZ001
Location	1000 S. GARDNER
Designed By	W. J. ...
Drawn By	W. J. ...
Checked By	W. J. ...

INITIAL PLANNED DEVELOPMENT
STONEY CREEK APARTMENTS
BELGARDE ENTERPRISES
RAPID CITY, SD

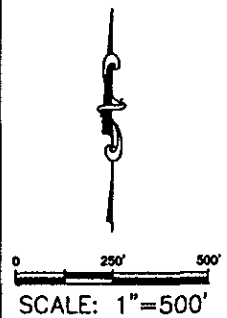


I:\Land Projects\8801Stoney Creek\dwg\8801Title.dwg, TITLE, 01/14/2005 12:34:21 PM



PROPOSED
NUGGET
GULCH ROAD

PROJECT SITE



INITIAL PLANNED DEVELOPMENT
STONEY CREEK APARTMENTS
CATRON BOULEVARD
RAPID CITY, SOUTH DAKOTA

Sheet Title:
**VICINITY
 MAP**

Location:
 SW 1/4 SEC. 22
 T1N, R7E, 6PM

Surveyed By: FMG
 Date: SEPT. 2004

Designed By: AF
 Drawn By: R/CK
 Checked By: AF

File Number:
8801



FMG, Inc.
 3700 Sturgis Road
 Rapid City, SD 57702-0317
 (605) 342-4105 FAX (605) 342-4222
 www.fmgengineering.com

Sheet Number:
1

Total Sheets
1