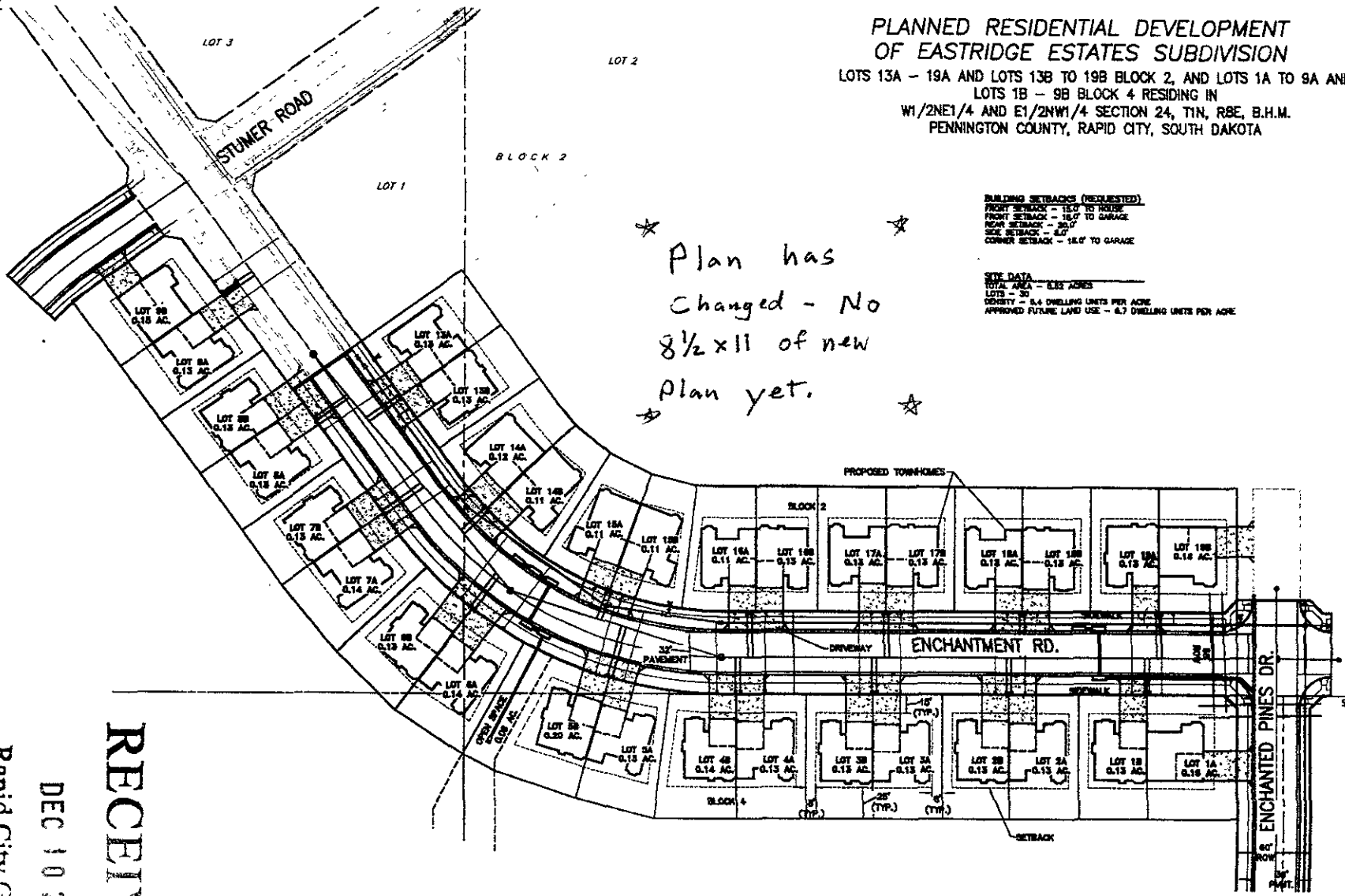


**PLANNED RESIDENTIAL DEVELOPMENT
OF EASTRIDGE ESTATES SUBDIVISION**
 LOTS 13A - 19A AND LOTS 13B TO 19B BLOCK 2, AND LOTS 1A TO 9A AND
 LOTS 1B - 9B BLOCK 4 RESIDING IN
 W1/2NE1/4 AND E1/2NW1/4 SECTION 24, T1N, R8E, B.H.M.
 PENNINGTON COUNTY, RAPID CITY, SOUTH DAKOTA

BUILDING SETBACKS (REQUESTED)
 FRONT SETBACK - 15.0' TO HOUSE
 FRONT SETBACK - 15.0' TO GARAGE
 REAR SETBACK - 20.0'
 SIDE SETBACK - 4.0'
 CORNER SETBACK - 15.0' TO GARAGE

SITE DATA
 TOTAL AREA - 0.82 ACRES
 LOTS - 30
 DENSITY - 0.4 DWELLING UNITS PER ACRE
 APPROVED FUTURE LAND USE - 0.7 DWELLING UNITS PER ACRE

★ Plan has
 changed - No
 8 1/2 x 11 of new
 plan yet. ★



RECEIVED

DEC 10 2024

Rapid City Growth
 Management Department

D.D.I.
DREAM DESIGN INTERNATIONAL, INC.
 PROFESSIONAL STRUCTURAL & CIVIL ENGINEERING CONSULTANTS
 406 KANBAN CITY ST., SUITE 4, RAPID CITY, SD 57701
 P: 605-342-6077 F: 605-342-6043 EMAIL: info@dreamdesigninc.com